

17

**ANNUAL REPORT
2017**



**PAKISTAN SUGAR MILLS ASSOCIATION
ISLAMABAD**

17

**ANNUAL REPORT
2017**



**PAKISTAN SUGAR MILLS ASSOCIATION
ISLAMABAD**

**MANAGEMENT OF
PAKISTAN SUGAR MILLS ASSOCIATION
2017-18**

Central Executive Committee

1. Mr. Javed A. Kayani	Chairman
2. Mr. Iskander M. Khan	Senior Vice Chairman
3. Mr. Ahsan Latif	Vice Chairman
4. Mr. Asim Ghani	Vice Chairman
5. Mr. Abdul Qadar Khattak	Vice Chairman
6. Mr. Ikram ul Haq	Member
7. Mr. Muhammad Shakeel	Member
8. Mr. Ahmed Ebrahim Hashim	Member
9. Mr. Ahmed A. Bawany	Member
10. Col. (R) Muhammad Wilayat	Member
11. Mr. Muhammad Bilal Bhatti	Member

Secretariat

Mr. Inayatullah Khan
Secretary General

Office 102, Gulistan Khan House,
Fazl-e-Haq Road, Blue Area, Islamabad
Phone: 051-2150073, 2150074,
051-2150075
Fax: 051-2150076

Website: www.psmacentre.com
E-mail: psma.centre@gmail.com

**ZONAL COMMITTEES
2017-2018**

Zonal Committee Punjab

1. Mr. Ahsan Latif
2. Mr. Nauman Ahmed Khan
3. Mr. Ahmad Ali Tariq

Chairman
Member
Member

Zonal Secretariat

Mr. Muhammad Arif
Unit No. 2, Happy Homes
38-A, Main Gulberg, Lahore

Acting Secretary
Tel: 042-35879840-2
Fax: 042-35752940
Email: info@psma.pk

Zonal Committee Sindh

1. Mr. Asim Ghani
2. Mr. Ahmed A. Bawany
3. Mr. Baqir Jaffery

Chairman
Member
Member

Zonal Secretariat

Mr. Muhammad Qasim Pahore
1st Floor, Modern Motors House,
Beaumont Road, Karachi

Secretary
Tel: 021-35686526
Fax: 021-35680344
Email: psma_sz@ymail.com

Zonal Committee Khyber Pakhtunkhwa

1. Mr. Abdul Qadar Khattak
2. Mr. Iqbal Nasim
3. Mr. Shahid Suleman

Chairman
Member
Member

Zonal Secretariat

Mr. Wasiullah
Premier Sugar Mills &
Distillery Co. Ltd, Mardan

Acting Secretary
Tel: 0937-862051-52
Fax: 0937-862989
Email: psmmdn@premiergroup.pk

**Annual Review
52nd Annual General Meeting
January 2018**

Distinguished Members,

It is with a great sense of aplomb that I present, members, on behalf of the Central Executive committee, the Annual Review of the Pakistan Sugar Mills Association, that is essentially a report for a year of excellence, turmoil and vicissitudes. The Sugar industry being agro-based presents a peculiar profile. This report deals with some key issues including *inter alia* humongous sugar production and its disposal which is required to be addressed, as early as possible. PSMA has repeatedly presented the problems of the industry to the government with proposals of holistic and pluralistic solutions encompassing the industry as well as the entire sector. Pakistan sugar industry holds immense potentials of growth which can be efficiently and efficaciously exploited in the interest of all stakeholders and the national economy. The sector continued its contribution to the satisfying needs of domestic and commercial consumers, employment generation, exports, and its new role in diversification of the "energy mix". However, increased production well beyond domestic needs, the new role in power generation and issues of exports raise demands of policy responses and as such the foremost need of the sector is a comprehensive sectoral policy by the government. PSMA has remained anxiously engaged in fulfilling all attending responsibilities in addition to careful watch over and encouragement of the corporate social responsibility and promotion of competition.

**PRODUCTION 2016-17
The year under review**

Sugar year 2016-17 experienced unprecedented production of sugarcane to the tune of 73.401 million tons, sugarcane crushing reached 70.990 million tons and resulting in production of 7.005 million tons of Sugar. Similarly, production of by-products, particularly, bagasse, molasses, filter mud and crop wastes also increased. Some mills have diversified to produce ethanol, and electricity to export to the national grid. With burgeoning surplus of sugar world over it is time for value addition by utilizing the by-products and this requires concerted policy supports from the government. A glimpse at the last five years data shows a positive trend in the production figures:

The tables 1 and 2 reflect a significant upward trend of 42% in sugarcane crushing from 50 million tons in 2012-2013 to 71 million tons 2016-2017. Sugar recovery rate that averaged 10% in 2012-2013 and remained stagnant at 9.87 in 2016-17. Similarly, sugar production surged from 5.036 million tons in 2012-13 to 7.005 million tons in 2016-17 causing a sizeable difference of 39%. The fluctuations in the production of sugar and sugarcane precisely underscore the need for a coherent policy for sugar sector which will continue to face challenges of potentials and performance.

During 2016-17 season 89 sugar mills remained operational. Production of sugar from cane was 7.005 million tons. The sugar industry, by crushing 71million tons during 2016-17 season achieved about 3.20 million tons of molasses as a by-product, at an average recovery of 4.5%. A thoughtful policy framework, taking care of sugar and derivatives of its key by-products is needed. Table 3, reflects important statistics of annual sugar

production of 7 million tons in 2016-17 along with the carried forward stock of 1.265 million tons that far exceed the domestic need of 5.1 million tons @ 26 kg per capita and highlight the need for comprehensive planning including exports.

Export

In the “Sugar Year” 2016-17, the industry was overjoyed as well as challenged by a surplus of almost 2 million tons of Sugar. To offload the surplus, hectic effort were made since the very beginning by presenting our case at the relevant forums including the Sugar Advisory Board as early as October 2016 and secured governmental approval in December for export. However, the quantity recommended for export by the Sugar Advisory Board (SAB) was further reduced by the inter-Ministerial Committee constituted by the ECC stemming from fear of price hike above the level Price of December 2016 as approved by the Federal Economic Coordination Committee ECC. ECC allowed export of 225,000 tons on December 28, 2016 as against PSMA demand of 1,000,000 tons at a time when the international market was in excess of USD 500 and no freight support was required.

PSMA continued its efforts and secured further approvals of the government for an additional package of 200,000 tons in March 2017 through the SAB forum in March 2017. The phased and restricted export approvals proved insignificant *viz. a viz.* sugar surplus particularly in the context of growers’ payments. PSMA continued its efforts and the Ministry of Industry & Production (MOIP) arranged a SAB meeting in May 2017 and in consultation with all participants determined 1.884 million tons surplus at the end of

crushing season and recommended 1.2 million tons for export without making it “time bound”. However, subsequently in July 2017 the international market plummeted to USD 360 and the export of only 300,000 tons was allowed by the ECC. However, sugar industry was finding it extremely difficult to export without the freight support.

At that time PSMA after persistent efforts requested another SAB meeting that was held in September 2017 where it was again determined by the Board that there would be a surplus of 1.5 million tons by the end of season and recommended to export 1.5 million tons of sugar. This time PSMA also raised the issue of freight support in order to be competitive in the international market. The recommendations were examined by the inter-Ministerial Committee headed by Commerce Minister and later in September 2017, the ECC allowed 500,000 tons of sugar with a freight support of Rs. 10.70/kg based on a cascading mechanism between the international price of US\$ 376/MT as (on 08-09-2017) and \$499/MT based on cost of production as calculated by MOIP. Permission of 300,000 tons given earlier was replaced with 500,000 tons together with freight support of 10.70/kg. However, PSMA submitted its case for a freight support of Rs 19/kg.

Based on 2017-18 production forecasts of 7.5 million tons and a carry-over of almost 1,048,673 tons the total availability of sugar in the country would be about 8.5 million tons. After defraying the requirement of domestic consumption of 5.5 million tons the industry would be left with about 3 million tons of surplus sugar. PSMA after extensive meetings with the government was able to get further permission for another 1.5 million

tons with freight support of 10.70/kg for making payments to the growers. Out of the remaining 1.5 million tons, 300,000 tons will be purchased by TCP. PSMA will seek permission to export additional quantity of sugar after the final production figures for the crushing season 2017-18.

Sugarcane crop pricing mechanism

By far the sugarcane pricing mechanism has been the cause of the greatest degree of flux for the sugar sector. The sugarcane price is fixed by the Provincial Governments and for the year 2016-17, it was again notified at Rs. 180/40 kg for Punjab and Khyber Pakhtunkhwa, and Rs.182/40 kg for Sindh. The concerned forum of the Federal Government failed to achieve any success to secure deregulation of the sugarcane pricing despite efforts made by PSMA hence the old mechanism of fixing the support prices still remains in vogue. The backward calculation of "ex-mill" price fails even to match the price of sugarcane announced by the Provincial Governments. Liaising at the Provincial level to formulate a fair policy has been a core component of PSMA's functioning in the year under report.

Domestic outlook 2017-18

Sugarcane, Cotton and Rice are three major Kharif competing crops. In real terms sugarcane cultivation is on an increase for the preceding years as it is remunerative for the growers as against other crops. The Provincial governments in their first estimate for 2017-18 have indicated crop area under sugarcane as 1.310 million hectares compared

to 1.217 million hectares during the last year. Sugarcane production for 2017-18 is forecasted at 78.394 million tons compared to 73.401 million tons of the previous year.

These figures indicate an upward trend in the Production of sugarcane and if the crop condition remains favorable then we may expect a sugar production in excess of 7.5 million tons in the year to come. Thus the entire sector needs to be revisited in terms of the policies, regulations and laws in vogue particularly with a view to contemplate a progressively more deregulated sector. PSMA remains engaged in developing a policy cum position paper in this regard.

International Sugar Scenario

The overall picture of consumption and stock position internationally is placed at Table 4. Consumption is the main driver of world sugar economy. The world sugar consumption is likely to lag behind production in 2017-18, indicating a reversal of the pattern of the two preceding years of deficit. Higher prices during the years of deficit production resulted in lower consumption thus preparing the ground for over production. Better weather condition would also contribute to a sizeable increase in production in many countries. If production and consumption do not exhibit a concomitant variation it would create a burden on the world sugar market with a surplus and impact prices with clear indication of rendering sugar production less profitable. Price of sugar, per capita income, population growth and health concerns are some factors identified to influence the demand, of which population growth and per capita income are singled out as the most dominating factors. From 2017 to 2026, world population is expected to grow by 8

% and consumption by 16 % during the same period (source: F.O. Licht IS&S Report Aug. 2017). According to the United States Department of Agriculture (USDA), world sugar production of 2017-18 is forecasted at 179.636 million tons as against consumption of 171.559 million tons. This indicates that in 2017-18, sugar price may remain at the lowest ebb due to increased supply and falling demand. The higher production is forecasted for India, Thailand, China and European Union.

ISO in its report of August 2017 has forecasted a world sugar production of 179.3 million tons with consumption of 174.664 million tons, entailing a world surplus of 4.636 million tons with an impact on sugar prices as indicated in Table 5 and 6.

At the end, I would like to thank the Zonal Chairmen, Central and Zonal Executive Committees, all members of PSMA and the Secretaries and staff of PSMA for their continued cooperation and in time support during these recent multipronged challenges faced by the Association. I shall be looking forward for their valuable views, guidance and support in order that the industry moves forward together to meet the current as well as future challenges.

With profound regards and gratitude, I remain,

Iskander M. Khan
Snr. Vice Chairman

Javed A. Kayani
Chairman

2nd January, 2018.



Pakistan Sugar Mills Association Annual General Meeting 2017



Standing: L - R: 1. Mr. Muhammad Arif, 2. Col (Retd) Muhammad Iftikhar, 3. Mr. Abdul Sattar Qureshi, 4. Mr. Muhammad Shakeel, 5. Mian Muhammad Rasheed, 6. Mr. Muhammad Waheed Ch.,
PSMA Punjab Zone
7. Mr. Javed Kayani, 8. Ch. Zaka Ashraf, 9. Mian Fawad Ahmad, 10. Mr. Ahsan Latif, 11. Mr. Ihsan ul Haq, 12. Mr. Waqar Ahmad, 13. Mr. Sohail Khokhar, 14. Mr. Awaiz Butt,
Chairman PSMA
Asraf Sugar Mills
Fatima Sugar Mills
Chairman PSMA PZ
Irfan Sugar Mills
Shahaj Sugar Mills
Noon Sugar Mills
Haq Bahu Sugar Mills
Standing: L - R: 1. Mr. Inayat Ullah Khan, 2. Mr. Ali Alfar Saleem, 3. Ch. Zafer Ullah Khan, 4. Mr. Wasif Mehmood, 5. Mr. Muhammad Rafique, 6. Ch. M. Aslam, 7. Mian Yousaf Aziz, 8. Mr. Ikram-ul-Haq,
Secretary General PSMA 'C'
Shakarganj Mills
Adan Sugar Mills
Al-Motiz Sugar Mills
JDW Sugar Mills
Pantoki Sugar Mills
Chaudhry Sugar Mills
Ranzan Sugar Mills
9. Mr. Nauman A Khan, 10. Mr. Ahmed Ali Tariq, 11. Mr. Asad Aslam, 12. Mr. Ashfaq Ahmad, 13. Col (R) Aamir Rauf
Lasyah Sugar Mills
Husein Sugar Mills
pantoki Sugar Mills
Secretary, PSMA PZ
Army Welfare Sugar Mills

Table 1 FIVE-YEAR SUGARCANE STATISTICS OF AREA & PRODUCTION

Year	Area Hectares	Production Tons	Yield Tons/Hectare
2012-2013	1,128,098	63,718,523	56.48
2013-2014	1,171,687	67,427,975	57.55
2014-2015	1,113,161	62,794,827	56.41
2015-2016	1,130,820	65,450,704	57.88
2016-2017	1,216,894	73,401,199	60.31

Table 2 FIVE-YEAR STATISTICS OF SUGAR PRODUCTION*

YEAR	No. of Mills	Cane Crushing Tons	Sugar Production Tons	Recovery %
2012-2013	86	50,089,483	5,030,129	10.04
2013-2014	88	56,460,524	5,587,568	9.90
2014-2015	89	50,795,218	5,139,566	10.12
2015-2016	89	50,024,249	5,082,110	10.16
2016-2017	89	70,989,946	7,005,678	9.87

* The trend in sugarcane cultivation and production of sugar

Table 3

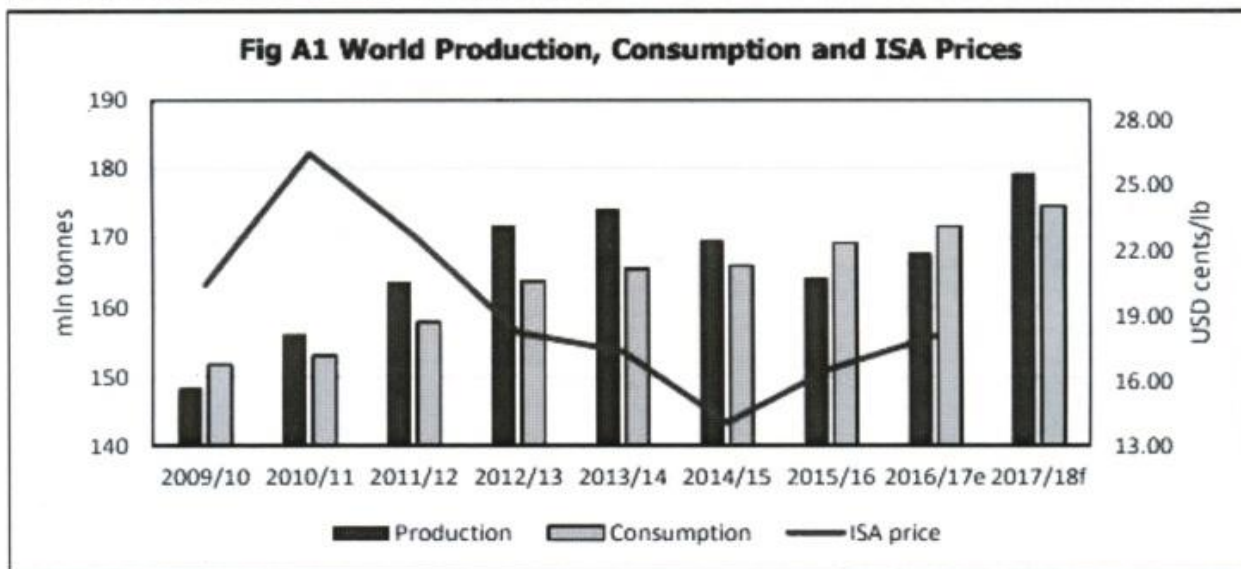
Detail of Production for the year 2016-17	
Sugarcane Plantation	73,401 m tons
Sugar Cane Crushed	70,990
Cane Sugar Production 2016-17	7,005,678
Beet Sugar Production 2016-17	42,995
Total Sugar Production	7,048,673
Carry Forward 2015-16 (as per MOIP record)	950,000
Total Availability	7,998,673
Export	425000
Additional export allowed	500,000
Balance	7,073,673
Consumption 2016-17	5,100,000
Carry Forward 2017-18	1,973,673

Table 4

World Sugar Balance
(million tons)

	2017/18	2016/17	Change	
			In million tons in %	
Production	179.300	167.773	11.527	6.87
Consumption	174.664	171.633	3.031	1.77
Surplus/Deficit	4.636	-3.860		
Import Demand	57.617	60.115	-2.498	-4.16
Export Availability	62.146	60.234	1.912	3.17
End Stocks	87.471	87.364	0.107	0.12
Stocks/Consumption ratio in %	50.08	50.90		

Source: ISO Quarterly Market Outlook August, 2017



ISO Monthly Average Prices of Refined Sugar US \$ / Tons

Months	2010-11	2011-12	2012-13	2013-14	2014-15	2015-16	2016-17
October	682.97	676.87	557.85	499.90	428.59	388.48	579.4
November	719.41	635.55	521.88	471.25	420.59	400.87	526.4
December	747.52	604.92	518.54	449.61	397.97	409.23	524.2
January	770.36	620.66	505.36	424.34	397.80	415.73	540
February	746.21	634.83	499.06	454.76	384.33	388.39	532.6
March	701.88	638.24	518.01	471.84	364.95	436.29	504.76
April	655.56	601.56	500.88	468.19	367.38	438.45	465.07
May	599.94	555.14	482.20	478.00	365.28	474.05	465.07
June	688.47	571.02	483.03	476.27	352.15	527.53	396.54
July	769.50	621.14	477.42	458.03	358.72	541.33	397.45
August	736.20	568.77	484.63	437.52	341.01	538.80	380.05
September	694.41	560.65	485.20	421.61	348.83	597.20	371.92
Avg. Price	709.37	607.45	502.84	459.28	380.60	463.03	473.62

**APPENDIX TO 2017 ANNUAL REPORT
LIST OF ATTACHED STATISTICAL TABLES**

Table No.	Title of Table	Page No.
SUGAR AND SUGAR CROP		
TABLE 1	Sugarcane Plantation Area, Prod. Yield And Utilization By Mills	16,17,18
TABLE 2	Sugarcane Crushing, Sugar Prod. & Rec % 2002-2017	19,20
TABLE 3	Beet Sugar Position KP Sugar Mills, 2002-2017	21
TABLE 4	Consolidated Sugar Production, 2002-2017	21
TABLE 5	Molasses Production in Pakistan from cane, beet and raw	22
TABLE 6 (1)	Sugarcane Support Price, Mill-gate Delivery	22
TABLE 6 (2)	Sugarcane Support Prices vs. Avg. Retail Sugar Price	23
TABLE 7	Retail Price of Essential Commodities vs. Sugar 2007-17	24
TABLE 8 (1)	Mill wise Sugar Position Punjab 2016-17	25,26
TABLE 8 (2)	Mill wise Sugar Position, Khyber Pakhtunkhwa 2016-17	27
TABLE 8 (3)	Mill wise Sugar Position Sindh 2016-17	28-29
TABLE 8 (4)	Mill wise Sugar Position from Beet 2016-17	30
TABLE 8 (5)	Total Sugar Production of Pakistan (Summary 2016-2017)	30
TABLE 9	Sweetener Consumption, Sugar +Gur Equiv. 2002-15	31
TABLE 10	Import of Refined Sugar. 2002-2017	32
TABLE 10(A)	Import of Raw Sugar. 2002-2017	32
TABLE 11	Export of Sugar. 2002-2017	33
TABLE 12	Export of Molasses. 2002-2017	33
TABLE 13	Export of undenature Ethyl Alcohol. 2001-2017	34

Avg. Sugarcane Area, Production and Yield (1956 – 2017)	
Sugarcane Area, Production and Yield (Graph) (1956 – 2017)	
Sugar Consumption kg per capita in Pakistan (Graph) (2002 – 2017)	
Seven Years Domestic Monthly Retail Sugar Prices with Graph	
SUGAR INTERNATIONAL	
Ten Largest Sugar Producers and Consumers	
Ten Largest Net-Exporters and Importers	
World Sugar Balance	
Seven Years Monthly Refined Sugar Prices (International Trade Market)	
Monthly Domestic vs. International Sugar Prices for 2016-17	
World Major Cane Sugar Producing Countries	
MISCELLANEOUS	
Former PSMA Chairmen	
List Of Sugar Mills With Locations & Addresses	
Sugar Production, Marketing & Stock Situation Season's Final as on 30 th Sept. 2017	
Sugar and sugarcane summary ten years I- II	
Domestic Sugar Production, Availability & Consumption (Graph)	
Domestic Sugar Cane Production (Graph)	

Abbreviations:

MOC	:	Ministry of Commerce
TCP	:	Trading Corporation of Pakistan
MOIP	:	Ministry of Industries & Production
SAB	:	Sugar Advisory Board
MOF	:	Ministry of Finance
SBP	:	State Bank of Pakistan
E.S.P	:	Economic Survey of Pakistan
Pop	:	Population
ECC	:	Economic Coordination Committee
FBR	:	Federal Board of Revenue
F.B.S	:	Federal Bureau of Statistics
NFSR	:	Ministry of National Food Security & Research
P.G	:	Provincial Government
CRD	:	Crop Reporting Department
Prod	:	Production
Hect.	:	Hectare
M.T	:	Metric Tons
Mln	:	Million
Qty	:	Quantity
Q.P.	:	Quality Premium
Rec.	:	Recovery
PSMA	:	Pakistan Sugar Mills Association
N.A	:	Not Applicable
Mol	:	Molasses
CCP	:	Competition Commission of Pakistan
SECP	:	Security Exchange Commission of Pakistan
DGTO	:	Directorate General of Trade Organization
F.Y	:	Fiscal year
C.Y	:	Calendar year
S.Y	:	Sugar year
K.P	:	Khyber Pakhtunkhwa

Table 1

**Sugarcane Plantation Area, Production, Yield
and Utilization by Sugar Mills 2002-2017**

Pakistan		Area: Hect. Prod: Tons Yield: Tons/Hect.		
Year	Area	Production	Yield	Utilization % by Mills
2002-03	1,099,700	52,049,000	47.33	80.28
2003-04	1,074,700	53,800,000	50.00	81.19
2004-05	966,600	43,533,000	45.04	73.74
2005-06	906,980	44,292,000	48.80	67.94
2006-07	1,029,000	54,871,000	53.00	73.78
2007-08	1,241,300	63,920,000	51.49	82.60
2008-09	1,029,400	50,045,400	48.60	66.21
2009-10	942,870	49,372,900	52.36	70.09
2010-11	987,700	55,442,100	56.13	80.47
2011-12	1,046,000	58,038,200	55.48	83.13
2012-13	1,128,098	63,718,523	56.48	79.00
2013-14	1,171,687	67,427,975	57.55	84.00
2014-15	1,113,161	62,794,827	56.41	80.90
2015-16	1,130,820	65,450,704	57.88	76.45
2016-17	1,216,894	75,450,620	62.00	94.00
Punjab				
2002-03	735,000	33,169,000	45.12	83.15
2003-04	709,000	34,419,000	49.00	83.10
2004-05	645,000	29,332,000	45.47	77.65
2005-06	625,200	28,949,000	46.30	66.81
2006-07	712,000	37,542,000	53.00	70.85
2007-08	872,200	40,306,000	48.73	81.90
2008-09	666,500	32,294,700	48.50	64.02
2009-10	607,420	31,324,000	51.60	66.95
2010-11	672,200	37,481,000	55.75	74.37
2011-12	761,200	42,893,000	56.34	75.07
2012-13	767,670	42,982,070	56.00	74.50
2013-14	756,750	43,704,000	57.75	78.00
2014-15	683,934	41,074,000	60.06	72.50
2015-16	705,350	41,968,200	59.50	68.00
2016-17	777,821	49,613,000	63.78	89.00

Source: Provincial Governments (CRD).

Sindh

Area: Hect.
 Prod.: Tons
 Yield: Tons/Hect.

Year	Area	Production	Yield	Utilization
				% by Mills
2002-03	259,000	13,798,000	53.27	89.98
2003-04	260,000	14,612,000	56.00	88.90
2004-05	215,000	9,357,000	43.52	84.59
2005-06	183,180	11,243,000	61.40	81.67
2006-07	215,000	12,529,000	58.00	92.80
2007-08	308,800	18,793,900	60.86	89.05
2008-09	263,900	13,304,300	50.40	76.28
2009-10	233,950	13,505,400	57.70	85.04
2010-11	226,500	13,900,000	60.43	97.84
2011-12	245,000	14,455,000	59.00	92.02
2012-13	253,694	15,966,224	63.00	92.40
2013-14	297,558	18,362,575	61.71	102.48
2014-15	316,749	16,613,835	52.45	104.16
2015-16	312,815	17,984,260	57.49	99.00
2016-17	320,501	20,208,895	63.05	*108.00?

Khyber Pakhtunkhwa

2002-03	105,000	5,049,000	48.08	35.40
2003-04	105,000	4,745,000	45.00	43.53
2004-05	106,000	4,816,000	45.43	29.26
2005-06	98,600	4,100,000	41.60	38.23
2006-07	102,000	4,800,000	47.00	46.98
2007-08	104,800	4,792,000	45.73	62.11
2008-09	98,200	4,408,500	44.90	52.48
2009-10	100,800	4,507,900	44.70	47.77
2010-11	88,400	4,030,300	45.59	75.31
2011-12	94,400	4,325,500	45.82	69.47
2012-13	106,734	4,770,229	44.70	70.41
2013-14	117,379	5,361,400	45.68	67.00
2014-15	112,478	5,106,992	45.40	71.83
2015-16	112,655	5,498,244	48.81	67.02
2016-17	118,572	5,628,725	47.47	86.00

* Variation is due to some unreported data on boarder.
 Source: Provincial Governments (CRD).

Area: Hect.
 Prod.: Tons
 Yield: Tons/Hect.

Balochistan

Year	Area	Production	Yield	Utilization % By Mills
2002-03	700	33,000	47.14	-
2003-04	700	34,000	48.57	-
2004-05	600	27,960	46.60	-
2005-06	N.A	N.A	N.A	-
2006-07	N.A	N.A	N.A	-
2007-08	500	28,100	56.20	-
2008-09	800	37,900	47.40	-
2009-10	700	35,600	50.90	-
2010-11	600	30,800	51.00	-
2011-12	700	31,400	44.85	-
2012-13	700	31,000	45.00	-
2013-14	700	31,000	45.00	-
2014-15	N.A	N.A	N.A	-
2015-16	N.A	N.A	N.A	-
2017-18	N.A	N.A	N.A	-

Source: Provincial Governments (CRD).

Table 2

**Sugarcane Crushing, Sugar Production
and Recovery 2002-2017**

Pakistan	Year	Mills	Cane Crushed	Cane Qty:	Tons
				Sugar Qty:	Tons
				Rec.:	Percent
				Sugar Made	Recovery
2002-03	71	41,786,689	3,652,745		8.74
2003-04	71	43,661,378	3,997,010		9.15
2004-05	71	32,101,739	2,922,126		9.10
2005-06	74	30,090,632	2,588,177		8.60
2006-07	77	40,483,977	3,516,218		8.69
2007-08	78	52,776,922	4,740,913		8.98
2008-09	82	33,139,418	3,134,145		9.46
2009-10	83	34,611,003	3,133,494		9.05
2010-11	84	44,526,719	4,172,729		9.37
2011-12	86	48,248,535	4,670,380		9.64
2012-13	86	50,089,483	5,030,129		10.04
2013-14	88	56,460,524	5,587,568		9.90
2014-15	89	50,795,218	5,139,566		10.12
2015-16	89	50,042,249	5,082,110		10.16
2016-17	90	70,989,948	7,005,480		9.87
Punjab					
2002-03	38	27,583,062	2,351,102		8.52
2003-04	38	28,604,925	2,599,490		9.09
2004-05	38	22,776,832	2,046,633		8.99
2005-06	40	19,340,641	1,566,047		8.10
2006-07	41	26,601,603	2,268,174		8.53
2007-08	42	33,063,564	2,952,784		8.93
2008-09	45	20,677,089	1,963,957		9.50
2009-10	45	20,972,969	1,858,161		8.86
2010-11	44	27,890,459	2,598,085		9.32
2011-12	44	32,203,007	3,116,348		9.68
2012-13	44	31,980,732	3,172,408		9.92
2013-14	44	34,054,518	3,352,795		9.85
2014-15	45	29,776,144	2,967,266		9.97
2015-16	45	28,552,068	2,837,761		9.94
2016-17	45	44,143,322	4,314,229		9.77

Source: PSMA Zonal Offices/P.G
03 Non members in Sindh
01 Non member in KP

Pakistan Sugar Mills Association**ANNUAL REPORT 2017**

Sindh			Cane Qty: Sugar Qty: Rec.:	Tons Tons Percent
Year	Mills	Cane Crushed	Sugar Made	Recovery
2002-03	28	12,415,817	1,158,674	9.33
2003-04	28	12,990,824	1,221,268	9.40
2004-05	28	7,915,416	754,458	9.53
2005-06	28	9,182,553	902,907	9.83
2006-07	29	11,626,978	1,062,411	9.14
2007-08	29	16,737,003	1,561,378	9.33
2008-09	30	10,148,603	976,420	9.62
2009-10	31	11,484,422	1,095,104	9.54
2010-11	33	13,600,800	1,298,989	9.55
2011-12	34	13,040,210	1,267,050	9.72
2012-13	34	14,750,048	1,547,547	10.49
2013-14	37	18,818,581	1,920,819	10.21
2014-15	37	17,304,763	1,822,900	10.53
2015-16	38	17,821,668	1,898,191	10.65
2016-17	38	21,997,817	2,233,925	10.16
Khyber Pakhtunkhwa				
2002-03	5	1,787,810	144,917	8.11
2003-04	5	2,065,629	176,252	8.53
2004-05	5	1,409,491	121,034	8.59
2005-06	6	1,567,438	119,223	7.69
2006-07	7	2,255,395	185,634	8.23
2007-08	7	2,976,356	226,751	7.62
2008-09	7	2,313,725	193,768	8.37
2009-10	7	2,153,612	180,229	8.37
2010-11	7	3,035,460	275,655	9.08
2011-12	7	3,005,318	286,982	9.55
2012-13	7	3,358,702	310,174	9.23
2013-14	7	3,587,425	313,954	8.75
2014-15	7	3,714,311	349,400	9.41
2015-16	7	3,668,513	346,158	9.44
2016-17	6	4,848,809	457,327	9.43

Source: PSMA Zonal Offices/P.G
03 Non members in Sindh
01 Non member in KP

Table 3

**Beet Sugar Position KP Sugar Mills
2002-2017**

Year	Mills	Beet Sliced	Sugar made	Qty:	Tons
				Rec:	Percent
				Rec.	Molasses
2002-03	3	222,063	22,066	9.94	8,490
2003-04	3	250,171	23,797	9.51	8,684
2004-05	2	120,903	11,373	9.41	4,287
2005-06	3	93,518	8,934	9.55	3,404
2006-07	1	83,580	7,865	9.04	2,973
2007-08	1	64,095	5,532	8.8	2,576
2008-09	1	9,301	947	10.55	419
2009-10	2	53,336	4,641	9.15	2,140
2010-11	2	151,265	13,535	8.95	7,027
2011-12	2	176,709	18,216	10.31	8,392
2012-13	2	306,341	33,028	10.78	12,040
2013-14	1	251,418	27,389	10.89	8,548
2014-15	1	216,243	22,727	10.51	9,731
2015-16	1	307,366	32,791	10.67	13,831
2016-17	1	400,538	42,996	10.73	18,024

Table 4

**Consolidated Sugar Production in Pakistan
2002-2017**

Year	Cane Sugar	Beet Sugar	Raw Sugar	Qty: Tons
				Total
2002-03	3,652,748	22,066	1,945	3,676,759
2003-04	3,997,010	23,797	-	4,020,806
2004-05	2,922,126	11,373	182,302	3,115,801
2005-06	2,588,177	8,934	401,396	2,988,507
2006-07	3,516,218	7,865	2,860	3,526,943
2007-08	4,740,913	5,532	5,929	4,752,374
2008-09	3,134,145	947	-	3,135,092
2009-10	3,133,494	4,641	-	3,138,135
2010-11	4,119,418	13,535	39,679	4,172,726
2011-12	4,652,164	18,216	-	4,670,380
2012-13	5,030,129	-	33,028	5,063,158
2013-14	5,587,568	27,389	-	5,614,957
2014-15	5,139,566	22,727	-	5,162,293
2015-16	5,082,110	32,791	-	5,114,901
2016-17	7,005,480	42,996	-	7,048,476

Source: PSMA Zonal Offices/P.G

Table 5

**Molasses Production in Pakistan
from Cane, Raw & Beet
2002-2017**

Year	Qty: Tons			
	Punjab	Sindh	K.P	Pakistan
2002-03	1,304,284	656,520	87,313	2,048,117
2003-04	1,351,728	667,160	103,211	2,122,099
2004-05	1,039,937	393,287	64,171	1,497,395
2005-06	937,337	458,050	42,568	1,437,954
2006-07	1,222,482	578,833	109,787	1,911,102
2007-08	1,607,042	889,566	167,172	2,663,708
2008-09	928,514	493,079	114,739	1,536,332
2009-10	927,056	529,370	101,131	1,557,457
2010-11	1,249,324	643,651	141,580	2,034,555
2011-12	1,445,830	624,956	153,583	2,224,369
2012-13	1,422,807	663,305	166,639	2,252,751
2013-14	1,495,781	854,225	174,196	2,524,202
2014-15	1,281,768	781,665	183,702	2,247,137
2015-16	1,279,715	787,910	178,914	2,246,540
2016-17	1,877,383	982,451	218,128	3,077,962

Molasses figures estimated

Table 6 (1)

**Sugarcane Support Price
Mill-Gate Delivery (Per 40 Kg)**

Year	Punjab	Sindh	K.P	Q.P
2002-03	40	43	40	0.50
2003-04	40	41	40	0.50
2004-05	40	43	40	0.50
2005-06	45	60	45	0.50
2006-07	60	67	65	0.50
2007-08	60	67	65	0.50
2008-09	80	81	80	0.50
2009-10	100	102	100	0.50
2010-11	125	127	125	0.50
2011-12	150	154	150	0.50
2012-13	170	172	170	0.50
2013-14	170	172	170	0.50
2014-15	180	182	180	0.50
2015-16	180	172	180	0.50
2016-17	180	182	180	0.50
2017-18	180	182	180	0.50

Source: P.G

*Sub judicious

Table 6(2)

Sugarcane Support Price per 40 kg in Comparison with Season's Avg. Retail Price per kg 2007-2017

Year	Punjab	Sindh	K.P	Avg. Sugar (Open Market)
2007-08	60	67	65	27.92
2008-09	80	81	80	38.72
2009-10	100	102	100	57.11
2010-11	125	127	125	72.72
2011-12	150	154	150	60.99
2012-13	170	172	170	53.25
2013-14	170	172	170	53.82
2014-15	180	**182	180	57.14
2015-16	180	**172	180	62.60
2016-17	180	182	180	66.44
2017-18	180	**182	180	-

Sugarcane support price (Rs. per 40 Kg),

Retail price (season's Average/kg)

Source: P.G, E.S.P

* 2016-17: (July-April)

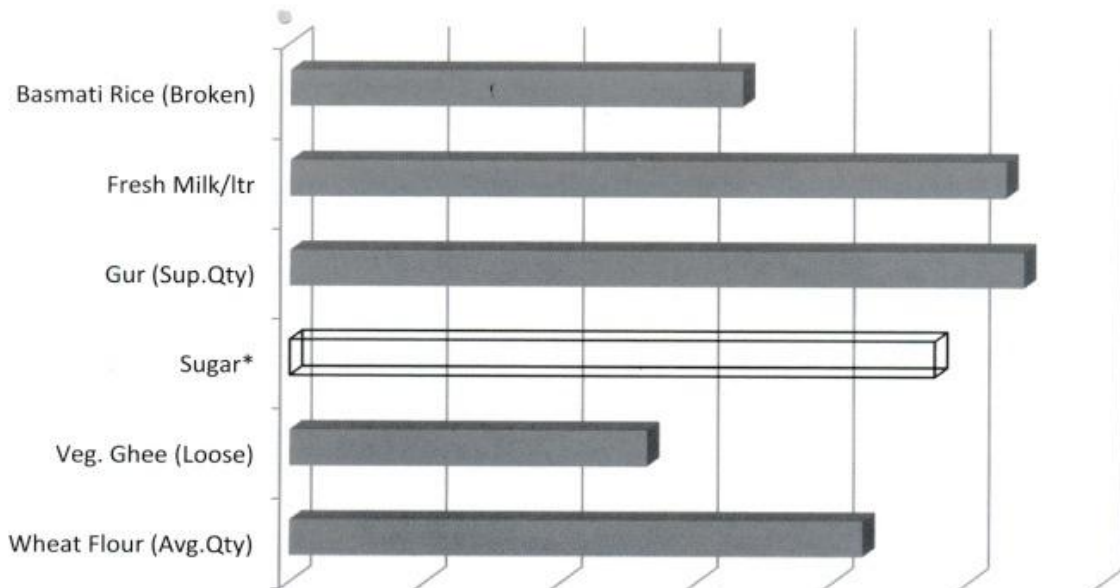
** Sub Judicious



Table 7

Retail Prices of Essential Commodities versus sugar
2007-2017

Years	Wheat Flour (Avg.Qty)	Veg. Ghee (Loose)	Sugar*	Gur (Sup.Qty)	Fresh Milk/ltr	Qty/Kg
						Basmati Rice (Broken)
2007-08	18.07	108.43	27.92	32.86	30.45	37.77
2008-09	25.64	110.69	38.72	43.65	36.62	47.12
2009-10	28.77	116.04	57.11	70.74	42.32	43.92
2010-11	29.56	150.31	72.72	83.86	50.10	50.32
2011-12	30.26	166.26	60.99	78.27	58.17	60.36
2012-13	34.53	160.73	53.25	74.50	65.24	69.01
2013-14	40.98	160.57	53.82	82.83	69.86	74.09
2014-15	39.58	153.91	56.37	82.96	76.00	73.01
2015-16	38.58	138.35	62.60	89.28	78.24	63.00
2016-17	38.22	143.01	66.44	89.06	80.44	62.97
% age	211.51	131.89	237.97	271.03	264.17	166.72

Graph showing Percentage of Price Increase
(2007-2017)

Source: E.S.P (Fiscal Year)

* 2016-17(July-April) (open market)

Table 8 (1)

**Mill wise Sugar Position Punjab
Season 2016-17**

Qty: Tons

PUNJAB		Days	CANE CRUSHED	Sugar PROD.	REC. %	* MOL PROD.	Rec %
1	ABDULLAH (Depalpur)		276,714	25,250	9.12	12,452	4.5
2	ABDULLAH (Shahpur)	Not Operated					
3	ADAM	168	710,053	65,097	9.17	33,091	4.66
4	ASHRAF	169	1,529,531	151,585	9.91	78,628	4.89
5	AL-MOIZ-II		851,587	85,579	10.05	38,321	4.5
6	BABA FARID		370,901	33,050	8.91	16,691	4.5
7	BROTHERS						
8	CHANAR		630,374	58,035	9.21	31,800	5.04
9	CHAUDHRY		522,958	52,070	9.96	23,533	4.5
10	SW (CHISHTIA)						
11	COLONY (PHALIA)	Not Operated					
12	COLONY (PUNJAB)	Not Operated					
13	ETIHAD		1,700,326	177,316	10.43	48,159	2.83
14	FATIMA		1,607,499	162,925	10.14	46,431	2.89
15	DARYA KHAN (Fecto)		867,154	79,240	9.14	39,022	4.5
16	HAMZA		3,916,618	399,999	10.21	176,248	4.5
17	HAQ BAHU		322,568	29,676	9.2	14,516	4.5
18	Haseeb WAQAS		169,632	14,030	8.27	7,633	4.5
19	HUDA (FAUJI)		495,605	47,350	9.55	22,302	4.5
20	HUNZA (i)		1,068,352	96,295	9.01	48,076	4.5
21	HUNZA (ii)		852,231	79,914	9.38	38,350	4.5
22	HUSEIN		660,136	65,043	9.85	29,706	4.5
23	INDUS	159	1,449,023	146,699	10.12	55,250	3.81
24	ITTEFAQ		426,707	41,830	9.8	19,202	4.5
25	JAUHARABAD		546,857	53,972	9.87	15,990	2.92

Continued.....Punjab							
26	J.D.W - I (United)	168	3,528,599	357,733	10.14	149,681	4.24
27	J.D.W - II (United)	163	2,373,561	247,926	10.45	101,620	4.28
28	TWO STAR		1,751,261	164,650	9.4	78,807	4.5
29	KASHMIR	135	664,661	61,931	9.32	29,710	4.47
30	LAYYAH		1,831,557	176,520	9.64	82,420	4.5
31	MACCA		52,937	4,450	8.41	2,382	4.5
32	MADINA		1,205,955	115,416	9.57	54,268	4.5
33	NOON		1,115,492	113,308	10.16	16,845	1.51
34	POPULAR		668,764	66,159	9.89	30,094	4.5
35	PATTOKI		727,161	63,405	8.72	32,722	4.5
36	RAMZAN		982,208	93,709	9.54	44,199	4.5
37	RASOOL NAWAZ		389,461	37,410	9.61	17,526	4.5
38	R.Y.K		1,728,228	168,116	9.73	77,770	4.5
39	SAFINA (TIC) Ph-Wali		1,038,142	102,788	9.9	46,716	4.5
40	SHAHTAJ	134	1,148,874	115,754	10.08	48,947	4.26
41	SHAKARGANJ (I)		838,456	77,527	9.25	37,731	4.5
42	SHAKARGANJ (II)		705,393	66,917	9.49	31,743	4.5
43	SHEIKHOO		2,340,612	222,539	9.51	105,328	4.5
44	TANDLIANWALA-I		702,070	62,542	8.91	31,593	4.5
45	TANDLIANWALA-III		1,375,104	130,474	9.49	61,880	4.5
TOTAL 2016-2017			44,143,322	4,314,229	9.77	1,877,383	4.25
TOTAL 2015-2016			28,552,068	2,837,761	9.94	1,279,715	4.48

* Molasses figures estimated

Table 8 (2)

**Mill wise Sugar Position K.P
Season 2016-17**

Qty: Tons

KHYBER PAKTHUNKHWA		Days	CANE CRUSHED	Sugar PROD.	REC. %	* MOL PROD.	Rec %	
1	AI-MOIZ		985,695	99,892	10.13	44,356	4.50	
2	CHASHMA (Unit-I)		1,368,854	125,119	9.14	61,598	4.50	
3	CHASHMA (Unit-II)	130	855,640	78,567	9.18	38,504	4.50	
4	KHAZANA		259,847	26,285	10.12	11,693	4.50	
5	PREMIER*	155	268,864	25,047	9.94	12,030	4.47	
6	TANDLIANWALA (ZAMAND)		1,109,909	102,416	9.23	49,946	4.50	
	Non- Members							
7	BANNU	Not Operated						
TOTAL 2016-2017 (B)			4,848,809	457,326	9.43	218,128	4.50	
TOTAL 2015-2016 (b)			3,668,513	346,158	9.44	165,083	4.50	

* Molasses figures estimated

Table 8 (3)

**Mill wise Sugar Position Sindh
Season 2016-17**

SINDH		Days	CANE CRUSHED	Sugar PROD.	REC. %	Qty: Tons * MOL PROD.	Rec %
1	AL-ABBAS	125	659,154	70,484	10.69	30,277	4.59
2	Abdullah Shah Ghazi	58	16,941	1,200	7.08	762	4.50
3	AL-NOOR	129	1,315,682	127,798	9.71	56,560	4.30
4	ALLIANCE	138	1,151,138	112,466	9.77	57,256	4.97
5	ANSARI	138	425,803	41,304	9.69	19,468	4.57
6	ARMYWELFARE	114	348,531	36,308	10.42	16,780	4.81
7	BAWANY	112	188,456	19,000	10.08	8,730	4.63
8	BANDI	134	709,987	68,800	9.69	29,985	4.22
9	CHAMBER	122	316,100	31,525	9.97	14,280	4.52
10	DEHARKI	137	1,950,674	205,041	10.51	79,152	4.06
11	DEWAN	99	507,088	52,020	10.26	24,260	4.78
12	DIGRI	136	471,261	47,468	10.07	23,478	4.98
13	FARAN	138	993,390	106,319	10.70	44,309	4.46
14	Gulf	139	1,204,370	125,165	10.40	54,197	4.50
15	J.D.W.-III (United)	137	2,016,687	207,747	10.30	81,210	4.03
16	HABIB	128	865,530	86,316	9.97	42,067	4.86
17	KHAIRPUR	140	852,226	83,579	9.80	33,237	3.90
18	KHOSKI	101	236,399	23,047	9.75	11,080	4.69
19	KIRAN	148	408,718	36,417	8.91	18,392	4.50
20	LARR	116	190,574	18,816	9.87	8,495	4.46
21	MATIARI	141	500,203	51,657	10.33	22,205	4.44
22	MEHRAN	133	1,056,198	116,780	11.06	47,865	4.53
23	MIRPURKHAS	131	738,378	78,897	10.69	34,860	4.72
24	MIRZA	96	134,593	12,655	9.40	6,745	5.01

Continued..... SINDH							
25	NAJMA	Not Operated					
26	NAUDERO	139	268,019	26,405	9.85	10,965	4.09
27	NEW DADU	126	351,906	32,609	9.27	14,769	4.20
28	PANGRIO	Not Operated					
29	RANIPUR	109	338,174	30,645	9.06	14,877	4.40
30	SAKRAND	117	459,573	42,300	9.20	19,500	4.24
31	SANGHAR	133	625,237	63,380	10.20	30,300	4.85
32	SERI	16	9,650	573	6.00	434	4.50
33	SHAHMURAD	111	672,747	72,755	10.8	30,750	4.57
34	SINDABADGAR	126	593,037	61,670	10.41	28,781	4.85
35	THARPARKAR	127	334,171	32,521	10.50	17,921	5.36
36	TANDO M. KHAN	Not Operated					
37	S.G.M	126	537,606	54,690	10.17	24,192	4.50
38	TANDO ALLAHYAR	135	549,616	55,568	10.11	24,311	4.42
	Non- Members						
TOTAL 2016-2017 (C)			21,997,817	2,233,925	10.16	982,451	4.47
TOTAL 2015-2016 (c)			17,821,668	1,898,188	10.65	787,910	4.42

* Estimated

Source: PSMA Zonal Offices/P.G

Table 8 (4)

**Mill wise Sugar Position from Beet
Season 2016-17**

Qty: Tons

KHYBER PAKTHUNKHWA		Days	BEET SCLICED	SUGAR PROD.	REC %	* MOL PROD.	Rec %
1	AL-MOIZ		400,538	42,996	10.73	18,024	4.50
2	PREMIER						
TOTAL 2016-2017			400,538	42,996	10.73	18,024	4.50
TOTAL 2015-2016			307,366	32,791	10.67	13,881	4.50

Table 8 (5)

**Total Sugar Production
Summary 2016-17**

Qty: Tons

	Cane Crushed	Raw Utilized	Beet Sliced	Sugar Prod.			Total Sugar	Mol. C+R+B*
				(Cane)	(Raw)	(Beet)		
Punjab	44,143,322	-	-	4,314,229	-	-	4,314,229	1,877,383
Sindh	21,997,817	-	-	2,233,925	-	-	2,233,925	982,451
K.P	4,848,809	-	400,538	457,327	-	42,996	500,323	236,152
Total 2016-17	70,989,948		400,538	7,005,480		42,996	7,048,476	3,095,986
Total 2015-16	50,042,249	-	307,366	5,082,110	-	32,791	5,114,901	2,246,540

* Estimated

Source: PSMA Zonal Offices/P.G

Table 9

**Sweetener Consumption in Pakistan
Sugar plus Gur Equivalent**

Qty: Mln. Metric Tonne

Sugar Year	Population Millions	Sugar Consumption		Gur Equivalent	Total Sweetener	Sweetener kg / capita
		Year's	Kg Per Capita			
2004-05	152.53	3.941	25.83	0.416	4.357	28.56
2005-06	153.45	3.846	25.06	0.642	4.488	29.24
2006-07	162.91	3.958	24.29	0.523	4.481	27.50
2007-08	166.41	4.297	25.82	0.132	4.429	26.16
2008-09	169.94	3.628	21.34	0.789	4.410	25.95
2009-10	173.51	4.186	24.12	0.625	4.810	27.72
2010-11	177.10	4.096	23.12	0.169	4.265	24.08
2011-12	180.71	4.385	24.27	0.240	4.625	25.59
2012-13	184.35	4.420	24.60	0.270	4.690	25.44
2013-14	188.02	4.512	24.00	0.390	4.902	26.07
2014-15	191.71	4.600	24.00	0.342	4.942	25.78
2015-16	195.40	4.904	25.10	0.395	5.299	25.12
2016-17	199.1	5.100	25.65	0.219	5.310	26.80

Source: - Pop: Economic Survey 2016-17
Sweetener: - Sugar + Gur

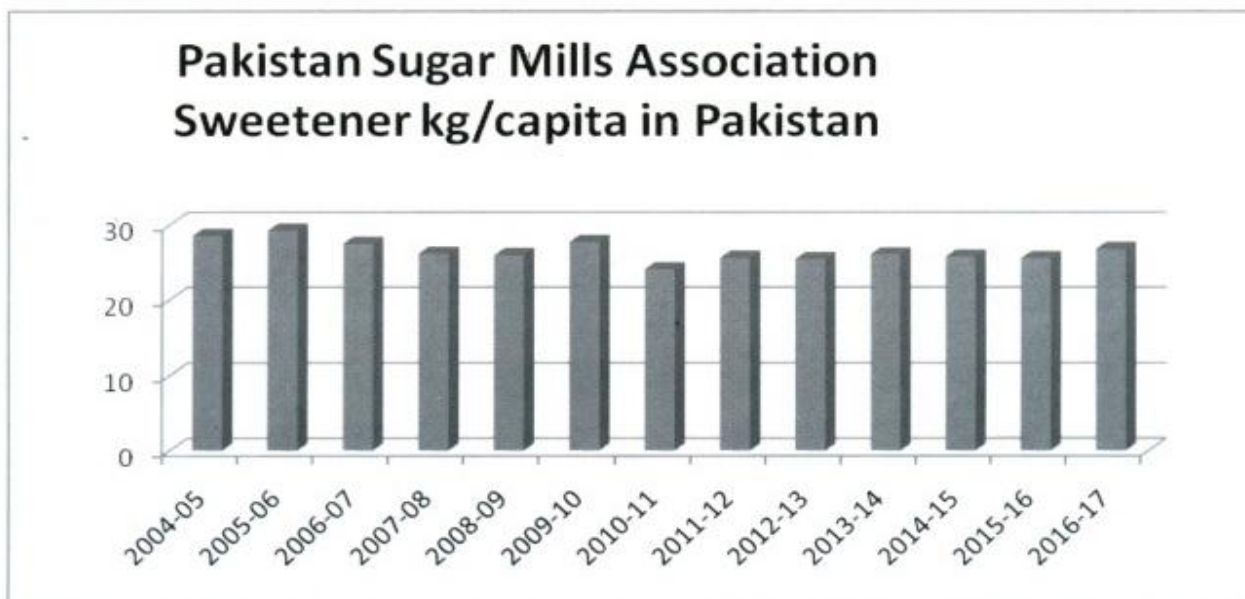


Table 10

**Import of Refined Sugar
2002-2017**

*Year	Quantity	Value	Avg. Price
2002-03	8,315	152,746	18,370
2003-04	11,398	188,509	16,539
2004-05	266,707	5,288,976	19,606
2005-06	1,527,322	37,365,929	24,465
2006-07	586,543	15,721,704	26,804
2007-08	36,692	912,073	24,858
2008-09	125,743	4,505,407	35,830
2009-10	370,000	14,811,000	40,029
2010-11	1,031,919	58,669,007	56,854
2011-12	17,221	1,166,825	67,756
2012-13	7,308	500,644	68,506
2013-14	9,824	635,370	64,675
2014-15	10,056	631,427	62,791
2015-16	535	28,517	53,303
2016-17	8,923	535,447	53,960

Qty: M/T
Value: '000' Rs.
Avg. Price: Rs./MT

Table 10 (A)

**Import of Raw Sugar
2002-2017**

*Year	Quantity	Value	Avg. Price
2002-03	607	-	-
2003-04	264	-	-
2004-05	185,604	-	-
2005-06	472,039	7,794,642	16,512
2006-07	11,033	N.A	-
2007-08	714	N.A	-
2008-09	-	-	-
2009-10	-	-	-
2010-11	-	-	-
2011-12	-	-	-
2012-13	-	-	-
2013-14	-	-	-
2014-15	-	-	-
2015-16	-	-	-
2016-17	-	-	-

Source: PBS

Table 11

Export of Sugar
2002-2017

*Year	Quantity	Value	Avg. Price
2002-03	45,669	627,949	13,750
2003-04	116,175	1,589,210	13,679
2004-05	54,771	1,028,710	18,782
2005-06	61,047	1,590,555	26,055
2006-07	12	330	27,500
2007-08	260,840	5,738,856	22,015
2008-09	23,980	639,677	26,675
2009-10	-	-	-
2010-11	-	-	-
2011-12	48,672	2,575,403	52,913
2012-13	1,064,215	51,692,066	48,573
2013-14	647,333	29,638,230	45,785
2014-15	708,356	32,685,502	46,143
2015-16	293,541	13,817,628	47,072
2016-17	*399,309	21,266,438	53,258

Qty: MT
Value: '000' Rs.
Avg. Price: Rs/MT

Table 12

Export of Molasses
2002-2017

*Year	Quantity	Value	Avg. Price
2002-03	1,272,630	2,652,975	2,084.63
2003-04	1,457,283	2,698,964	1,852.05
2004-05	1,151,431	4,297,617	3,732.00
2005-06	497,161	2,612,342	5,255.00
2006-07	373,177	1,704,034	4,566.00
2007-08	780,807	3,490,864	4,471.00
2008-09	936,338	7,486,584	7,996.00
2009-10	961,300	7,784,000	8,097.36
2010-11	86,437	892,087	10,321.00
2011-12	55,608	577,981	10,394.00
2012-13	225,221	2,747,341	12,198.00
2013-14	197,342	2,510,421	12,721.00
2014-15	83,229	1,010,347	12,139.00
2015-16	73,067	874,398	11,967.00
2016-17	101,410	1,217,122	12,001.00

Source: PBS/MOC (Fiscal Year)

* Sugar year

Table 13

Export of undenature Ethyl Alcohol

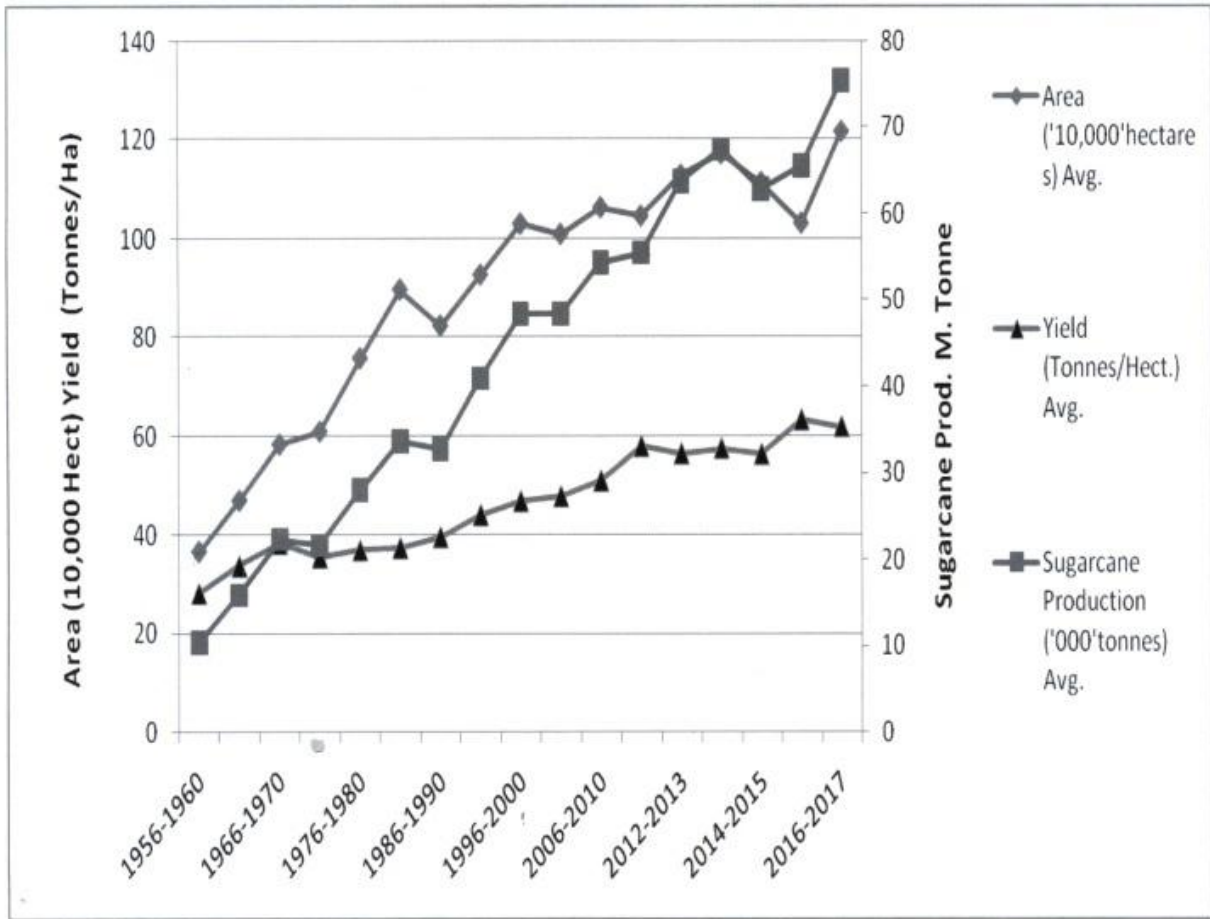
*Year	Quantity	Value	Avg. Price
2001-02	14,594,000	341,438	23.39
2002-03	16,341,575	342,658	20.96
2003-04	35,921,065	692,840	19.29
2004-05	36,669,688	1,067,445	29.00
2005-06	33,789,535	1,066,048	32.00
2006-07	34,116,438	1,122,000	32.00
2007-08	28,609,832	892,222	31.19
2008-09	27,045,396	1,209,025	44.70
2009-10	101,260,099	4,679,269	46.21
2010-11	168,509,200	9,506,883	56.00
2011-12	215,814,894	14,234,428	65.96
2012-13	142,065,426	8,735,649	61.49
2013-14	492,476,805	32,168,695	65.21
2014-15	421,881,994	25,749,257	61.00
2015-16	396,940,741	22,929,248	58.00
2016-17	358,483,301	29,330,083	82.00

Qty: Liters
Value: '000' Rs.
Avg. Price: Rs./Liter

Source: PBS (July- June)

Pakistan Sugar Mills Association			
Avg. Sugarcane Area, Production and Yield Tons/Ha Projected 1956- 2017			
Years	Area (‘000’hectares) Avg.	Sugarcane Production (‘000’tons) Avg.	Yield (Tons/Ha) Avg.
1956-1960	366	10,319	28.19
1961-1965	469	15,849	33.79
1966-1970	582	22,312	38.34
1971-1975	608	21,647	35.60
1976-1980	757	27,994	36.98
1981-1985	897	33,580	37.44
1986-1990	823	32,656	39.68
1991-1995	927	40,902	44.12
1996-2000	1,030	48,371	46.96
2001-2005	1,009	48,343	47.91
2006-2010	1,063	54,365	51.10
2011-2012	1,046	55,480	58.03
2012-2013	1,128	63,719	56.50
2013-2014	1,172	67,428	57.55
2014-2015	1,113	62,795	56.41
2015-2016	1,031	65,451	63.43
2016-2017	1,217	75,451	62.00

Source: PG(CRD)

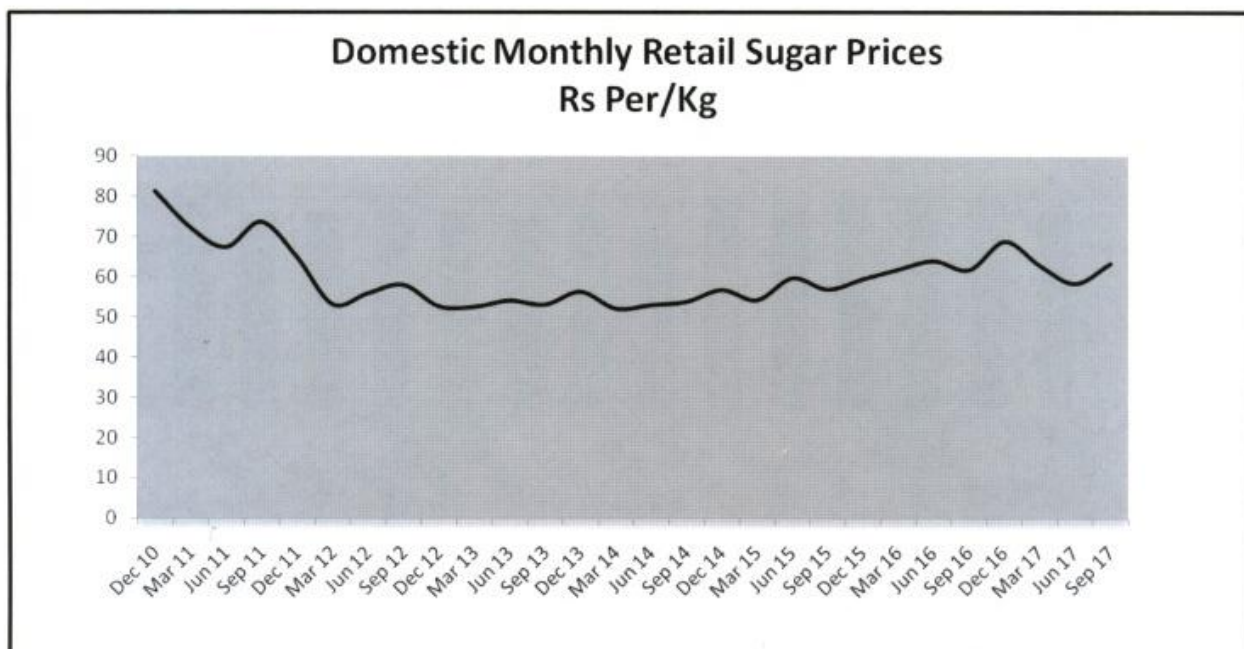


Source: CRD



Sugar Year	Sugar per capita
2002-03	23.86
2003-04	25.92
2004-05	25.83
2005-06	25.06
2006-07	24.29
2007-08	25.82
2008-09	21.34
2009-10	24.12
2010-11	23.12
2011-12	24.27
2012-13	24.00
2013-14	24.00
2014-15	24.00
2015-16	25.10
2016-17	25.65

Source: SAB 2016-17



Months	2010-11	2011-12	2012-13	2013-14	2014-15	2015-16	2016-17
Oct	81.91	72.01	50.53	55.68	59.17	61.55	71.04
Nov	87.98	67.25	54.07	58.86	56.78	59.56	71.80
Dec	73.78	55.52	53.04	54.12	54.12	57.14	63.68
Jan	72.65	52.39	52.52	51.39	53.92	59.80	64.86
Feb	67.02	50.44	51.83	51.25	54.23	62.80	63.12
Mar	76.95	56.39	52.89	53.35	54.28	62.93	60.41
Apr	67.14	56.48	53.79	52.60	56.92	63.76	59.97
May	65.77	55.22	53.66	52.27	59.53	63.75	58.46
Jun	69.19	55.66	54.50	53.84	62.49	64.37	56.48
Jul	70.74	55.25	54.90	55.92	65.41	67.34	55.04
Aug	74.65	55.25	54.68	57.83	65.36	71.17	56.88
Sep	76.03	54.11	54.50	60.49	64.75	71.03	55.45
Average Retail Rs.	73.65	57.16	53.41	54.80	58.91	63.76	61.43

Source: PBS

10 Largest					
10 LARGEST SUGAR PRODUCERS		10 LARGEST SUGAR CONSUMERS			
<i>(in mln metric tons, tel quel)</i>					
1	Brazil	38.99	1	India	24.76
2	India	24.79	2	EU-28	18.77
3	EU-28	15.47	3	China	15.78
4	China	9.99	4	Brazil	11.10
5	Thailand	9.26	5	USA	10.33
6	USA	7.75	6	Indonesia	6.43
7	Mexico	6.09	7	Russian Fed.	5.70
8	Russian Fed.	5.77	8	Pakistan	4.99
9	Pakistan	5.61	9	Mexico	4.49
10	Australia	4.62	10	Egypt, Arab R.	3.40
10 LARGEST CANE SUGAR PRODUCER		10 LARGEST BEET SUGAR PRODUCERS			
<i>(in mln metric tons, tel quel)</i>					
1	Brazil	38.99	1	EU-28	15.24
2	India	24.79	2	Russian Fed.	5.77
3	Thailand	9.26	3	USA	4.24
4	China	9.08	4	Turkey	2.37
5	Mexico	6.09	5	Ukraine	2.00
6	Pakistan	5.61	6	Egypt, Arab R.	1.38
7	Australia	4.62	7	China	0.91
8	USA	3.51	8	Iran	0.81
9	Guatemala	2.90	9	Japan	0.61
10	Indonesia	2.23	10	Belarus	0.59

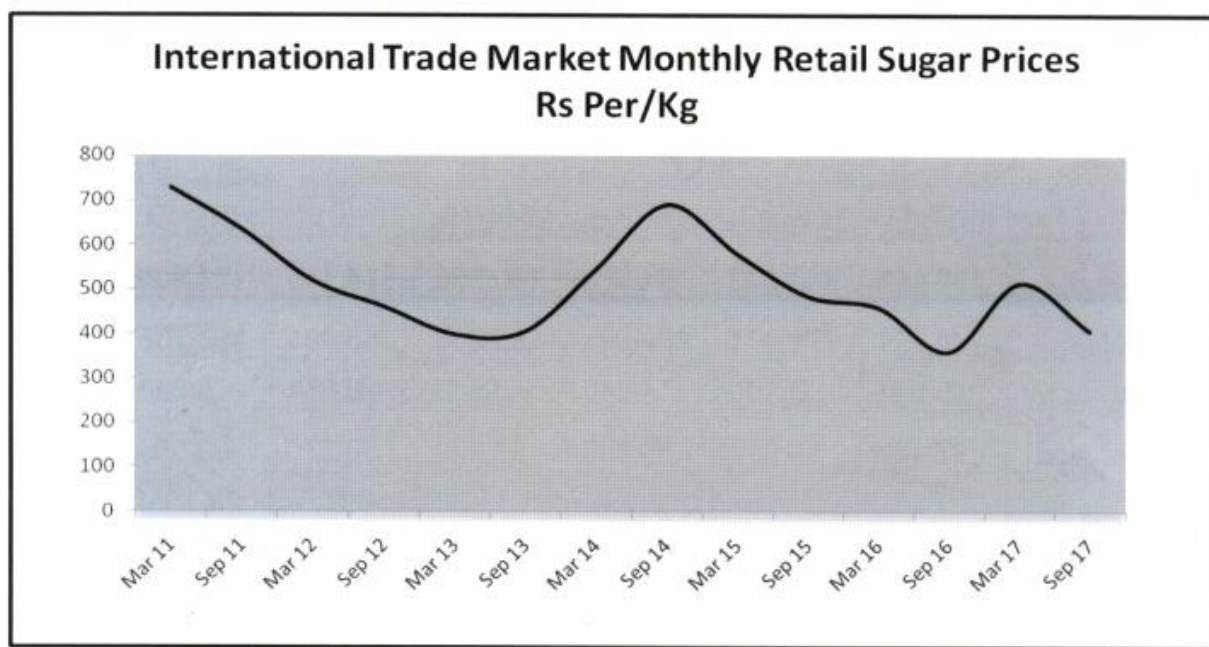
Source: - ISO Sugar Year Book 2017 data 2016

10 Largest								
10 LARGEST NET-EXPORTERS (in mln metric tons, tel quel)								
TOTAL		RAW SUGAR		WHITE SUGAR				
1	Brazil	28.93	1	Brazil	23.66	1	Brazil	5.27
2	Thailand	6.49	2	Australia	3.95	2	India	3.11
3	Australia	4.05	3	Thailand	3.41	3	Thailand	3.08
4	Guatemala	2.04	4	Guatemala	1.06	4	Guatemala	0.97
5	Mexico	1.54	5	Cuba	0.94	5	Mexico	0.65
6	India	1.06	6	Mexico	0.89	6	Ukraine	0.44
7	Cuba	1.00	7	El Salvador	0.47	7	Mauritius	0.42
8	Swaziland	0.60	8	Argentina	0.35	8	United Arab	0.37
9	Argentina	0.59	9	Swaziland	0.25	9	Pakistan	0.37
10	El Salvador	0.50	10	Costa Rica	0.19	10	Algeria	0.37
10 LARGEST NET-IMPORTERS (in mln metric tons, tel quel)								
TOTAL		RAW SUGAR		WHITE SUGAR				
1	China	5.91	1	Indonesia	5.12	1	China	3.29
2	Indonesia	5.35	2	China	2.62	2	Sudan	0.99
3	USA	2.82	3	EU-28	2.36	3	USA	0.70
4	EU-28	2.00	4	USA	2.12	4	Sri Lanka	0.60
5	Bangladesh	1.95	5	India	2.04	5	South Africa	0.44
6	Malaysia	1.66	6	Bangladesh	1.93	6	Chile	0.34
7	Nigeria	1.56	7	Algeria	1.89	7	Yemen Rep	0.34
8	Korea, Rep. of	1.55	8	Malaysia	1.86	8	Viet Nam	0.34
9	Algeria	1.53	9	Korea, Rep. of	1.77	9	Kenya	0.33
10	Japan	1.26	10	Nigeria	1.56	10	Ghana	0.32

Source: - ISO Sugar Year Book 2017 data 2016

World Sugar Balances (October/September) in thousand tons, raw value							
	2017/18	2016/17	2015/16	2014/15	2013/14	2012/13	2011/12
Production	179,448	168,373	164,253	169,556	174,145	171,804	163,597
Consumption	174,414	171,478	169,093	165,938	165,491	163,708	157,989
Surplus/deficit	5,034	3,105	4,840	3,618	8,654	8,096	5,608
Import demand	57,467	60,040	66,088	57,772	58,370	60,655	54,325
Export availability	61,094	60,095	66,323	57,895	57,983	60,605	54,321
End stocks	89,618	88,211	91,414	96,489	92,994	83,953	75,807
Stocks/ consumption ratio in %	51.38	51.44	54.06	58.15	56.19	51.28	47.98

Source: - ISO World Sugar Balance November, 2017



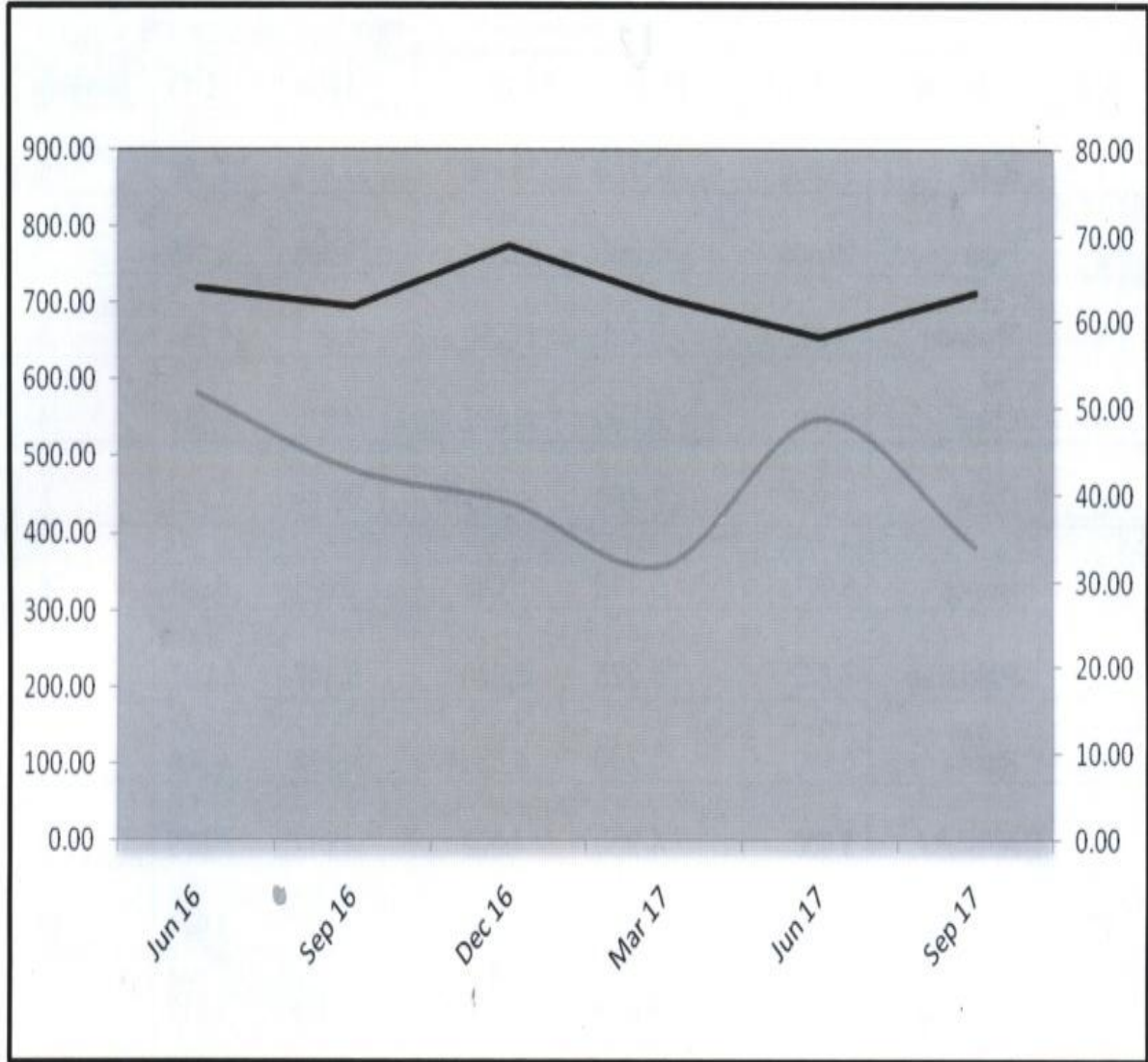
ISO Monthly Average Prices of Refined Sugar

US \$/Ton

Months	2010-11	2011-12	2012-13	2013-14	2014-15	2015-16	2016-17
October	682.97	676.87	557.85	499.90	428.59	388.48	579.40
November	719.41	635.55	521.88	471.25	420.59	400.87	526.40
December	747.52	604.92	518.54	449.61	397.97	409.23	524.20
January	770.36	620.66	505.36	424.34	397.80	415.73	540.00
February	746.21	634.83	499.06	454.76	384.33	388.39	532.60
March	701.88	638.24	518.01	471.84	364.95	436.29	577.20
April	655.56	601.56	500.88	468.19	367.38	438.45	459.50
May	599.94	555.14	482.20	478.00	365.28	474.05	434.80
June	688.47	571.02	483.03	476.27	352.15	527.53	403.70
July	769.50	621.14	477.42	458.03	358.72	541.33	402.30
August	736.20	568.77	484.63	437.52	341.01	538.80	386.90
September	694.41	560.65	485.20	421.61	348.83	570.70	362.20
Avg. Price	709.37	607.45	502.84	461.25	383.78	460.82	477.43

Source: Monthly Market Reports ISO

Monthly Domestic & International Sugar Prices Comparison For Sugar Year 2016-17



- International price in US\$ / Tonne
- Domestic price in Rs. / Kg

**World Major Cane sugar Producing Countries
Five Year Production & Ranking**

"000" Tons raw value (Oct. – Sept.)

S. #	Name	16-17	15-16	14-15	13-14	12-13	Ranking
1	Brazil	38,900	37,750	33,896	37,811	39,186	1
2	India	20,500	25,500	28,310	24,396	25,315	2
3	Thailand	9,865	9,750	11,296	11,284	11,284	3
4	China	9,300	8,700	10,556	14,218	12,784	4
5	U.S.A	7,390	7,450	7,592	7,169	7,619	5
6	Mexico	5,957	6,119	5,985	6,021	6,991	6
7	Pakistan	7,047	5,325	5,948	5,347	5,097	7
8	Russia	6,100	5,200	4,638	4,772	4,506	8
9	Australia	5,000	4,950	4,909	4,012	4,879	9
10	France	4,125	3,670	3,880	4,969	3,941	10
11	Germany	3,375	3,415	3,769	4,394	3,819	11
12	Guatemala	2,750	2,883	2,976	2,858	2,700	12
13	Indonesia	2,200	2,475	2,507	2,528	2,556	13
14	Philippines	2,200	2,150	2,274	2,480	2,472	14
15	Turkey	2,400	2,040	2,053	2,332	2,185	15

* Prod. ranking based on 2016-17

Source: World Sugar Balances (August 2017 – ISO)

World Sugar Production 2016-17 (Est)

Total Production:	167.773	Mln tons
Sugar production from Cane:	132.000	Mln tons
Sugar production from Beet:	35.800	Mln tons

Source: Quarterly Market Outlook (August. 2017)

**Former Chairmen
Pakistan Sugar Mills Association (PSMA)**

1970-1971	Mr. Khaliq Dar Noon
1971-1972	Mr. Ahmed Ibrahim
1972-1973	Mr. Taj Muhammad Khanzada
1973-1974	Ch. Bashir Ahmed
1974-1975	Mr. M. Akram
1975-1976	Mr. Taj Muhammad Khanzada
1976-1977	Mr. Mian Bashir Ellahi
1977-1978	Mr. M. Akram
1978-1979	Mr. Taj Muhammad Khanzada
1979-1980	Malik Manzoor Hayat Noon
1980-1982	Mr. M. Akram
1982-1983	Mr. Taj Muhammad Khanzada
1983-1984	Mr. Altaf M. Saleem
1984-1985	Mr. M. Akram
1985-1986	Mr. Taj Muhammad Khanzada
1986-1987	Mr. Altaf M. Saleem
1988-1990	Mr. M. Akram
1990-1992	Syed Abbas Shah
1992-1994	Mr. Altaf M. Saleem
1994-1996	Mr. Ismail Zakaria
1996-1998	Mr. Abbas Sarfaraz Khan
1998-2000	Mr. S. M. Tahir
2000-2002	Mr. Ashraf W. Tabani
2002-2004	Mr. Iskander M Khan
2004-2006	Ch. M Zaka Ashraf
2006-2008	Mr. Shunaid Qureshi
2008-2010	Mr. Iskander M Khan
2010-2012	Mr. Javed A. Kayani
2012-2014	Mr. Shunaid Qureshi
2014-2016	Mr. Iskandar M Khan
2016-2018	Mr. Javed A. Kayani

**Zone wise List of Sugar Mills
Locations and Districts**

PUNJAB

Mills Name & Address		Tel & Fax	Mills Location/ Dist.
1. Abdullah Sugar Mills Ltd. (unit-I), 6-F, Model Town, Lahore	Ph. Fx. Email:	(042)-35917321-3 (042)-35917317 pa.md@hwgc.com.pk	Depalpur Okara
2. AL -Arabia Sugar Mills Ltd., 55-K, Model Town, Lahore	Ph. Fx. Email:	(042)-35917321-3 (042)-35917317 pa.md@hwgc.com.pk	Shahpur Sargodha
3. Adam Sugar Mills Ltd., 345-A/1, Gulberg-III, Lahore.	Ph. Fx. Email:	(021)-32417812-17 (042)-35757216 (021)-32427560 (042)-35874220 adamsm.lhr@outlook.com adamsugar2@gmail.com	Chistian Bahawalnagar
4. Liaison Office 345-A-I, Gulberg-III, Opp-Wyeth Laboratories, Lahore.	P & F Fx.	(042)-35757216 (042)-35874220	
5. Ashraf Sugar Mills Ltd., 11-Upper Mall, Lahore.	Ph. Fx. E.mail:	(042)-35717333-555/35717222 (042)-35716999 info@asml.org.pk	Ashrafabad Bahawalpur
6. Baba Farid Sugar Mills Ltd., 42-G, Firdous Market, Gulberg III, Lahore	Ph. Fx. E.mail:	042-35884180-5 042-35711068 qaisarabbas@gmail.com imporientchemicals@gmail.com	Faisalabad Okara
7. Brother Sugar Mills Ltd., 135-Upper Mall, Lahore.	Ph. Fx. E.mail:	(042)-35757013-16 (042)-35710417 bsml_lhr@yahoo.com	Chunian Kasur
8. Chanar Sugar Mills Ltd., 7-A, New Muslim Town, Lahore.	Ph. Fx. E.mail:	(042)-35868077-78 (042)-35862264 javedkayani@gmail.com masifjamil.fca@gmail.com	Faisalabad
9. Chaudhry Sugar Mills Ltd., 146- Abu Bakar Block, New Garden Town, Lahore	Ph. Fx. E.mail:	(042)-35858135 -6 (042)-35858477 sharifwl@wol.net.pk	Gojra Toba Tek Singh
10. S.W (Former Chishtia) Sugar Mills Ltd, 187-A Sqautch Corner Uper Mall, Lahore	Ph. Fx. E.mail:	(042)-35755175-6 (042)-35762187 csml@wol.net.pk	Sillanwali Sargodha

Pakistan Sugar Mills Association**ANNUAL REPORT 2017**

11. IMPERIAL SUGAR MILL – I., Ismail, Aiwan-e-Science Building, 205 -Ferozpur Road, Lahore.	Ph. (042)-35758970-72 Fx. (042)-35763247 E.mail: waqar.bandey@imperialsugars.com	Phalia MandiBahauddin
12. IMPERIAL SUGAR MILL - II ., Ismail, Aiwan-e-Science Building, 205 -Ferozpur Road, Lahore.	Ph. (042)-35758970-72 Fx. (042)- 35763247 E.mail: waqar.bandey@imperialsugars.com	Mian Channu Khanewal
13. Etihad Sugar Mills Ltd., 3, Upper Mall, Bawa Park, Lahore	Ph. (042)-35877921-23 (042)- 35759508 Fx. (042)- 35712293 E.mail: sohail.dil@etihad.com.pk shakeel@tapl.com	Karamabad Rahimyar Khan
14. Fatima Sugar Mills Ltd., 2nd Floor, Mall of Lahore, Lahore Cantt.	Ph. 061-4512031 042-111-328-462 Fx. 061-4511677/042-36621389 E.mail: fatmagrp@mul.paknet.com.pk muhammad.amjad@fatima-group.com	Kot Addu Muzafargarh
15. Darya Khan Sugar Mills Ltd., 42-G, Firdous Market, Gulberg III, Lahore.	Ph. (042)- 35884180-5 Fx. (042)- 35711068 Email: qaissarabbas@gmail.com imporientchemicals@gmail.com	Darya Khan Bhakhar
16. Gunj Buksh (Pasrur) Sugar Mills Ltd., (non Member) 21/ 69, F.C.C, Green Villas, Gulberg-II, Lahore.	Ph. (042)- 35752123/ 3252759 FX. (042)- 35760329/ 32529209 E.mail: csml@wol.net.pk	Toba Road Jhang
17. Hamza Sugar Mills Ltd., A/22, S.I. T. E. Mauripur Road, Karachi	Ph. (021)-32561101-5/ 068-5582256 Fx. (021)- 2561873/ 068-5582043 E.mail: hamza_sugar@yahoo.com	Khanpur Rahimyar Khan
18. Haq Bahu Sugar Mills Ltd., 65-Infantry Road, Military Accounts Colony, Lahore Cantt.	Ph. (042)-36834016-22 Fx. (042)-36811253 E.mail: maccagroup@yahoo.com farrukh@maccagroup.com	Layyah Road Jhang
19. Haseeb Waqas Sugar Mills Ltd., 6-F, Model Town, Lahore.	Ph. (042)-35917321-3 Fx. (042)-35917317 E.mail: hwg@brain.net.pk pa.md@hwgc.com.pk	Nankana Sahib
20. Huda Sugar Mills Pvt Ltd., Askari Villas # 2, Army Housing Scheme, Sarwar Shaheed Road, Lahore	Ph. (042)- 36682935 041- 2560884 Fx. (042)- 36681599 (041)-2669090 E.mail: irfanfmhsm@hotmail.com	Sangla Hill Nankana Sahib

Pakistan Sugar Mills Association**ANNUAL REPORT 2017**

21. Hunza Unit –I &II Sugar Mills Ltd., 1-A, New Muslim Town, Lahore.	Ph. 042-111-161-161 042-35882941-4 Fx. 042-35882945/35862245 E.mail: hunzasugar.headoffice@gmail.com	Shahkot Faisalabab
22. Husein Sugar Mills Ltd., 30-A/E-1, old FCC Gulberg III, Behind Gaddafi Stadium, Lahore.	Ph. (042)-35762089-90 Fx. (042)-35712680 E.mail: info@huseinsugarmills.com	Jaranwala Faisalabad
23. Indus Sugar Mills Ltd., 17-Tipu Block, New Garden Town, Lahore	Ph. (042)-35882801-2 Fx. (042)-35835180 E.mail: indussugar10@hotmail.com khokharsohail@hotmail.com	Kot Bahadur RajanPur
24. Ittefaq Sugar Mills Ltd., 40-B-II, Gulberg III, Lahore	Ph. (042)-35765021-6 Fx. (042)-35759546 E.mail: alshafi@brain.net.pk	Pakpattan Pakpattan
25. Jauharabad Sugar Mills Ltd., 109-A Street No. 03 , Cavalry Ground, Lahore.	Ph. (042)- 37175229/ 36670031 Fx. (042)- 37175256 E.mail: amtax@jsml.com.pk www.jsml.com.pk	Jauharabad Khushab
26. JDW-1 Sugar Mills Ltd., 17- Abid Majeed Road, Lahore -Cantt	Ph. (042)-36664891-92 Fx. (042)-36654490 E.mail: jdwho@brain.net.pk sabir@jdw-group.com	Mouza Shirin Rahimyar Khan
27. JDW-II (United) Sugar Mills Ltd., 17- Abid Majeed Road Lahore Cantt.	Ph. (042)- 36664891-92 Fx. (042)-36654490 E.mail: mjaffar@jdw.group.com sabir@jdw-group.com	Sadiqabad Rahim Yar Khan
28. Kamalia Sugar Mills Ltd., C/o Punjab Beverages Co. (Pvt) Ltd Nisar Colony, Samundri Road, Faisalabad Askari Villas # 2, Sarwar Road, Lahore Cantt.	Ph. (041)-8660270/866370 Fx. (041)- 8660700 E.mail: maqsood_anwar@hotmail.com Ph. 0463-700175/177 Fx. 042-36681599	Kamalia Toba Tek Singh
29. Kashmir Sugar Mills Ltd., 40-B-II, Gulberg -III, Lahore	Ph. (042)-35765021-6 Fx. (042)-35759546 E.mail: alshafi@brain.net.pk	Shorkot Jhang
30. Layyah Sugar Mill Ltd., 2D-1, Gulberg III, Lahore.	Ph. (042)-35771066-71 Fx. (042)-35756687 E.mail: nauman.khan@almoiz.com info@almoiz.com	Layyah

Pakistan Sugar Mills Association**ANNUAL REPORT 2017**

31. Macca Sugar Mills Ltd., 65- Infantry Road, Lahore Cantt.	Ph. (042)-36834016-20 Fx. (042)-36811253 E-mail: farrukh@maccagroup.com maccagroup@yahoo.com	Manga Road Kasur
32. Madina Sugar Mills Ltd., Gate No. 3, The University of Faisalabad, Sargodha Road, Faisalabad.	Ph. (041)-8869891-96 Fx. (041)-8869899 E-mail: acc1msm@madinahgroup.com.pk am.msm@madinahgroup.com.pk	Chiniot
33. Noon Sugar Mills Ltd., 4 Sarwar Road, Near Rahat Bakeri Lahore Cantt.	Ph. (042)-36655777 Fx. (042)- 35788468 E-mail: iqbal.talib@noonsugar.net info@noonsugar.net	Bhalwal Sargodha
34. Popular ^(Ex-National) Sugar Mills Ltd., 311-Chapal Plaza, HasratMohani Road, II Chundrigar Road, Karachi	Ph. (042)- 37465670 (0486)-886281-3 Fx. (042)- 37414866 E-mail: chairman@populargroup.com.pk gm.psml@populargroup.com.pk	Jan Muhammadwala Sargodha
35. Pattoki Sugar Mills Ltd., 42-G, Firdous Market, Gulberg III, Lahore.	Ph. (042)- 35884180-5 Fx. (042)- 35711068 E-mail: qaisarabbas@gmail.com imporientchemicals@gmail.com	Pattoki Kasur
36. Ramzan Sugar Mills Ltd., 55-K, Model Town Lahore	Ph. (042)- 35857234-5 Fx. (042)- 35857232 E-mail: sharif@wol.net.pk ikram@sgroup.pk	Chiniot Jhang
37. R.Y. K Sugar Mills Ltd., 75/4D Sarfaraz Rafiqi Road, Lahore Cantt.	Ph. (042)-36601381-4/(068)-5882101 Fx. (042)-36601385 E-mail: info@rykmills.com	Rahim Yar Khan
38. SAFINA SUGAR MILL 2D-1, Gulberg III, Lahore	Ph. (042)-35771070-71 (042)-35771068 Fx. (042)-35756687/35771175 E-mail: nauman.khan@almoiz.com info@almoiz.com	Lalian Jhang
39. Shahtaj Sugar Mills Ltd., 72/C-1, Gulberg III Lahore	Ph. (042)-35710482-84 Fx. (042)-35711904 E-mail: shahtajsugar@gmail.com mail@shahtajsugar.com	MandiBahauddin Gujrat
40. Shakarganj (I) Sugar Mills Ltd., Toba Tek Singh Road, Jhang, Jhang.	Ph. (0477)-631001 / 5 (047)-7652801-05 Fx. (047)-652811 E-mail: m.bashir@shakarganj.com.pk parvez@shakarganj.com.pk	Toba Road Jhang

Pakistan Sugar Mills Association

ANNUAL REPORT 2017

41. Shakarganj -II Mills Ltd., 57 KM Jhang Sargodha Road Addah Bhone, 10th Floor, 10-B, Block E-II Main Boulevard, Gulberg III, Lahore	Ph.	(042)-35783801-3	AddaBhone
	Fx.	(042)-35870357 (047)-7223017	Jhang
	E.mail:	akhtar.habib@shakarganj.com.pk hussain.malik@shakarganj.com.pk	
42. Rasool Nawaz Sugar Mills (Pvt) Ltd, Gourmet Foods (unit 6) Mauza Bhubatian Stop, Main Defence Road, Lahore.	Fx.	(042)- 35321736 (042)- 35213794	Gojra Faisalabad
	E.mail:	ranarayasad@gourmetpakistan.com Rana Rayasad 0300-6661654	
43. Sheikho Sugar Mills Ltd., 11-F Commercial Area, Phase-1 D.H.A Lahore, Lahore Cantt.	Ph.	(042)- 35728901-4-6 (042)- 35893531	Kot Adu Muzafargarh
	Fx.	(042)- 35728904 Yousuf_ssml@hotmail.com	
	E.mail:	shakeelsheikh@hotmail.com	
44. Tandlianwala-I&II Sugar Mills Ltd., 66-L, Gulberg II, Lahore.	Ph.	042- 35750220 (042)- 35715081-6	Kanjwani Faisalabad
	Fx.	(042)- 35710929	
	E.mail:	ahmad_lodge@yahoo.com farid@pepsi-lahore.com.pk	

SINDH

Mills Name & Address		Tel & Fax	Mills Location / Dist.
1. Abdullah Shah Ghazi Sugar Mills Ltd., 65-Infantry Road, Military Accounts Colony, Lahore	Ph: FX: E-mail:	(042)-36834016- 22 (042)-36811253 info@maccagroup.com	Gharo Thatta
2. Al-Abbas Sugar Mills Ltd., Pardeis House, Survey # 2/1, R.Y – 16, Old Queens Road, Karachi 74000.	Ph. Fx. E-mail:	021-32470220-9 021-32470087 021-32470090/32470467 sugar@cyber.net.pk	MirwahGorchani Mirpurkhas
3. Al-Noor Sugar Mills Ltd., 96-A, Sindhi Muslim Society, Karachi	Ph. Fx. E.mail:	021-34550161-3 021-34551990 021-34556675 alnoor@fascom.com	Taluka Moro Nawabshah
4. Alliance Sugar Mills. Pvt. Ltd 50/3-A Tufail Road Lahore Cantt.	Ph. Fax Email	042-36660051-52 021-36660065 info@alliancesugar.com	Ubauro Ghotki

Pakistan Sugar Mills Association**ANNUAL REPORT 2017**

5. Ansari Sugar Mills Ltd., 2nd Floor, Block-4, Hockey Club Of Pakistan stadium, Karachi.	Ph. Fx. E.mail:	021-35655131-4 021-35680533 naudero@cyber.net.pk	Matli Hyderabad
6. Army Welfare Sugar Mills Ltd, Army welfare Trust, AWT Plaza, 6th Floor, The Mall, Rawalpindi.	Ph. Fx. E.mail:	(0297) 861205 (0297) 861733 awsmawt@yahoo.com	Badin
7. Bawany Sugar Mills Ltd., 2 nd Floor, Block-4, Hockey Club of Pakistan Stadium, Karachi	Ph. Fx. E.mail:	021-35655131-4 021-35680533 naudero@cyber.net.pk kmajid@cyber.net.pk	Talhar Badin
8. Bandhi Sugar Mills Ltd., 2nd floor, Continental Trade Center, Main Clifton Road, Karachi,	Ph. Fx. E.mail:	021-3503215-19	
9. Chamber Sugar Mills 2 nd Floor, Block-4, Hockey Club of Pakistan Stadium, Karachi	Ph. Fx. E.mail:	021-35655131-4 021-35680533	
10. Dewan Sugar Mills Ltd., 7th floor, Block- Finance & Trade Centre Main Shahra-e-Faisal Karachi.	Ph. Fx. E.mail:	021-111-364-111 021-35630814 dewanyousuf@dewangroup.com.pk	Budho Talpur Thatta
11. Deharki Sugar Mills Ltd., 17-Abid Majid Road, Lahore Cantt	Ph. Fx. E.mail:	042- 36664891-96 042- 36654490	District Ghotki
12. Digri Sugar Mills Ltd., 48 J /1, Block 6, P.E.C.H.S. Karachi.	Ph. Fx. E.mail:	021-34541195-8 021- 34534501 digri@cyber.net.pk	Digri Mirpurkhas
13. Faran Sugar Mills Ltd., 14-H, PECHS, Block 6, Shahra-e-faisal Karachi	Ph. Fx. E.mail:	021- 34322851-4 021- 34322864 info@faran.com.pk	Sheikh Bhirkio Hyderabad

Pakistan Sugar Mills Association**ANNUAL REPORT 2017**

14. Gulf Sugar Mills Ltd., 64-E-1, Gulberg III Lahore.	Ph. Fx. E.mail:	(042)-35870192-96 (042)-35760466	
15. J.D.W-III (Ghotki) Sugar Mills Ltd., 17-Abid Majeed Road, Lahore Cantt.	Ph. Fx. E.mail:	042-36664891-96 042-36654490 jdwho@brain.net.pk jdwho@jdw-group.com	Channu Ghotki
16. Habib Sugar Mills Ltd., 3rd Floor, Imperial Courts, Dr. Ziauddin Ahmed Road, Karachi	Ph. Fx. E.mail:	(021)- 35680036-9 (021)- 35684086 sugar@habib.com	Nawabshah
17. Khairpur Sugar Mills Ltd., 3 rd Floor, Plot No. 15-C, 9 th Phase-V, Commercial Lane, Zamzama, D.H.A Karachi.	Ph. E.mail:	(021)- 35810771-5 (021)- 35810776 headoffice@jumanigroup.com	NarooDhoro Khairpur
18. Khoski Sugar Mills Pvt. Ltd. 2nd Floor, Hockey Club of Pakistan Stadium, Karachi	Ph. Fx. E.mail:	(021)-35655131-4 (021)-35680533 kmajid@cyber.net.pk	Khoski Badin
19. Kiran Sugar Mills Pvt. Ltd. Noman Goth Duber Road, Rohri Dist, Sukkur	Ph. Fx. E.mail:	071- 5623561 071- 5623564 kiransugarmillsltd@gmail.com	Khoski Badin
20. Larr Sugar Mills Ltd., 2nd Floor, Hockey Club, Pakistan Stadium, Karachi	Ph. Fx. E.mail:	(021)- 35655131- 4 (021)-35680533 lsml@cyber.net.pk	DehKinjhar – Sajawal Thatta
21. Matiari Sugar Mills Ltd., C-48, KDA Scheme No.1 Karachi. 75350	Ph. Fx. E.mail:	(021)-345213823/ 34529698 (021)- 34541734 matsug@attglobal.net	Matiari Hyderabad
22. Mehran Sugar Mills Ltd., 14-B, 14 th floor, Dolmen City, Executive Tower, HC-3, Block # 04, Marine Drive, Clofton Karachi	Ph. Fx. E.mail:	(021)-35297814 (021)- 35297818-27 msm@mehransugar.com	Tando Allah Yar Hyderabad
23. Mirpurkhas Sugar Mills Ltd., 2 nd Floor, Modern Motors House, Beaumont Road, Karachi.	Ph. Fx. E.mail:	(021)-111-345-111/ 35682565-7 (021)-35682839 msmho@sat.net.pk	Mirpurkhas Mirpurkhas
24. Mirza Sugar Mills Ltd., 10 th Floor, Lakson Square, Building No. 1, Portion 'B', Sarwar Shaheed Road, Karachi	Ph. Fx. E.mail:	(021)-35680151/35680148 (021)- 35680183 msml1@cyber.net.pk	Deh Charo Tappo Badin

Pakistan Sugar Mills Association**ANNUAL REPORT 2017**

25.Najma Sugar Mills Ltd., Sikander House F-58, Park Lane Block -5 Clifton, Karachi	Ph. Fx. E.mail:	(021)-35831082/35870321 (021)-35831069 nsml@khi.comsets.net.pk	Jhuddo Mirpurkhas
26.Naudero Sugar Mills Ltd., 2 nd Floor, Hockey Club, Pakistan Stadium, Karachi.	Ph. Fx. E.mail:	(021)-35655131-4 (021)-35680533 naudero@cyber.net.pk	Naudero Larkana
27.New Dadu Sugar Mills Ltd., 2 nd Floor, Block # 4, Hockey Club of Pakistan Stadium ,Karachi	Ph. Fx. E.mail:	(021)-35655131-4 (021)-35680533 kmajid@cyber.net.pk	Piarogoth Dadu
28.Pangrio Sugar Mills Ltd., 10 th Floor Lakson Square, Building No. 1 Portion 'B' Sarwar Shaheed Road, Karachi	Ph. Fx. E-mail:	(021)- 35680151/35680148 (021)- 35680183 psml2@cypber.net.pk	Deh Rajauri-2 Badin
29.Ranipur Sugar Mills Ltd., C-98, Kehkashan, Scheme-5, Clifton, Karachi.	Ph. Fx. E.mail:	(021)-5291731-7 (021)-34314857 ranipursugar@gmail.com	Ranipur Khairpur
30.Sakrand Sugar Mills Ltd., 41-K, Block -6 , P.E.C.H.S., Karachi	Ph. Fx. E.mail:	(021)-111-484-848/34531637 (021)-34531642 (021)- 34546456/34535374 admin@sakrandsugar.com	Qazi Ahmed Nawabshah
31.Sanghar Sugar Mills Ltd., 101- Ocean Centre Talpur Road, Karachi	Ph. Fx. E.mail:	(021)-35371441-3 (021)- 35371444 info@sangharsugarmills.com	Sindhri Sanghar
32.Seri Sugar Mills Ltd., 1 st Floor, Hussain Ali Centre, M.A Jinnah Road, Karachi.	Ph. Fx. E.mail:	(021)-32439630 (021)-32437828 (021)-32413600 tabani@cyber.net.pk	Deh Norai Jagir Hyderabad
33.Shahmurad Sugar Mills, Ltd., 96-A, Sindhi Muslim Society, Karachi	Ph. Fx. E.mail:	(021)-34550160-3 (021)-34556675 alnoor@fascom.com	Jhok Sharif Thatta
34.Sindh Abadgar's Sugar Mills Ltd., 209, 2 nd Floor, Progressive plaza, Beaumont Road, Karachi	Ph. Fx. E.mail:	(021)-35638212-138 (021)-35638219 sasm@fascom.com	Deenpur Hyderabad
35.TMK Sugar Mills Ltd., 1 st Floor, Hassan Ali Centre, Opp. M.W. Tower, M.A. Jinnah Road, Karachi.	Ph. Fx. E.mail:	(021)-32439630 (021)-32437828 (021)-32413600 tabani@cyber.net.pk	TMK Hyderabad

Pakistan Sugar Mills Association

ANNUAL REPORT 2017

36.SGM Sugar Mills Ltd.,
(Sardar Ghulam Mohammad)
National Hockey Stadium
Gate No. 16, Gulberg,
Lahore

Ph. 042-32404550-2
Fx. (042)-32404554
E.mail: info@sgmsugar.com

Jarwah
Road,
Ghotki

37.Tharparkar Sugar Mills Ltd.,
108/ 03, 3rd Avenue,
Block # 5, Main Clifton,
Near Police Club, Karachi

Ph. (021)-35863730/ 38065903
(021)-35467613
Fx. (021)-35863729
E.mail: tharparkarsugar@yahoo.com

Tharparkar
Mirpurkhas

38.Tandoallayar Sugar Mills Ltd.,
2nd Floor, Hockey Club of Pakistan
Stadium, Karachi

Ph. (021)- 35655131-4
Fx. (021)- 35680533
E.mail:

KHYBER PAKHTUNKHWA

Mills Name & Address		Tel & Fax	Mills Location/ Dist.
1. Chashma-I Sugar Mills Ltd., Unit1, University Road, Dera Ismail Khan	Ph. Fx. E. Mail:	(0966)750090-91 (0966)750092 csmdik@brain.net.pk	D.I. Khan
2. Chashma-II Sugar Mills Ltd., Unit 2, Ramak, Dera Ismail Khan	Ph. Fx.	(0966)756365, 756365 (0966)756327	D.I. Khan
3. Tandlianwala Sugar Mills Ltd. (Ext. Zamand) 66-L, Gulberg II, Lahore.	Ph. Fx. E.mail:	0966-756153/756158 0966-756301/756298 tsmlzamand@yahoo.com farid@pepsi-lahore.com.pk	Miran Dera Ismail Khan
4. Al-Moiz Industries Ltd., 2-D-1, Gulberg-III, Lahore	Ph. Fx. E. mail:	(042)-35771066-71 0966-720910 (042)-35756687/35771175 nauman.khan@almoiz.com	Chashma D.I. Khan
5. Bannu Sugar Mills Ltd., SeraiNaurang, Bannu	Ph. Fx.	(0969)-351022/ 352444 (0969) 350112	SeraiNaurang Bannu
6. Premier Sugar Mills Ltd., Mardan.	Ph. Fx. E.mail:	0937-862051-2 0966-606370 0937-862989 psmmdn@premiergroup.pk	Mardan
7. Khazana Sugar Mills Ltd., Khazana, Peshawar	Ph. Fx.	091-2041694/2045732 091-2040550	Peshawar

**Sugar Production Marketing & Stock
Summary (Season 2016-17)
as on 30th September, 2017**

	Area: hect.	
	Prod: tons	
	Yield: T/hect	
Sugarcane Plantation Area	1,216,894	
Sugarcane Production	75,450,620	
Average Yield	62.00	
	Sugarcane Crushing	Sugar Produced
Punjab	44,143,322	4,314,229
Sindh	21,997,817	2,233,925
KP	4,848,809	457,327
(Cane sugar) Total	70,989,948	7,005,480
Sugar refined from raw		-
Sugar produced from beet		42,996
Total sugar produced		7,048,476
Carryover stock (2015-16)		950,000
Import/TCP stock ₍₃₁₋₀₈₋₂₀₁₇₎		* -
Total Availability (2016-17)		7,998,476
Export (2016-17) (Source: MOIP)		425,000
Total consumption (2016-17) @ 25.65 kg/capita		5,100,000
Carry Forward (2017-18)		2,473,476

* Ignored

Source: PSMA Zonal Offices/ P.G

Monthly Retail Sugar Price Rs. per KG (2016-17)

October	71.04
November	71.80
December	63.68
January	64.80
February	63.12
March	60.41
April	59.97
May	58.46
June	56.48
July	55.04
August	56.88
September	55.45
Average	61.43

Source: PBS

Sugarcane & Sugar – I					
Sugar Year (Oct-Sept.)	2008-09	2009-10	2010-11	2011-12	2012-13,
Sugarcane Area (Hect)	1,029,400	942,870	987,700	1,046,000	1,128,098
Sugarcane produced	50,045,400	49,372,860	55,444,100	58,038,200	63,718,523
Yield (Tons/Hect)	48.6	52.36	56.4	55.48	56.5
Cane Utilized by Mills	33,733,266	34,604,070	44,511,571	48,248,535	50,089,483
percentage of utilization	67.41	70.09	82.36	83	80
Cane support price Punjab, KP / Sindh	80 / 80 / 81	100/100/10 2	125/125/12 7	150/150/152	170/170/172
Average Recovery (%)	9.45	9.05	9.25	9.68	10.04
Sugar Production (Cane)	3,188,561	3,132,709	4,119,516	4,652,164	5,030,129
Sugar Production (Beet)	947	4,641	13,535	18,216	33,028
Sugar Production (Raw)	-	-	39,678	-	-
Total Sugar Production	3,189,508	3,137,350	4,172,729	4,670,380	5,063,158
Beginning Stocks 1st Oct.	1,188,689		1,033,003		*1,394,013
Imports/TCP	125,743	478,155	755,417	-	**25,043
Total Available	4,503,940	4,482,062	5,205,732	5,779,701	6,457,171
Export	23,980		Nil	48,672	1,193,000
End Stock 30th Sep.	866,557	100,000	1,109,321	1,394,013	844,171
Consumption / Marketing	3,613,403	4,186,062	4,096,411	4,385,688	4,420,000
Average Consumption / month	301,117	348,839	341,367	365,688	368,333
Season's Av. retail price Rs./ kg	43.39	63.41	72.82	57.16	53.41
International Sugar Price US \$/Tonne	417.76	574.52	709.37	607.45	502.84
Molasses Prod. (C+B+R)*	1,560,286	1,557,457	2,034,729	2,207,632	2,252,751

* Cane + Beet + Raw

Sources: FBS, ISO, Zonal Offices

Sugarcane & Sugar – II					Estimates
Sugar Year(Oct-Sept.)	2013-14	2014-15	2015-16	2016-17	2017-18
Sugarcane area (hect)	1,171,687	1,113,161	1,130,820	1,216,894	1,310,155
Sugarcane produced(Tons)	67,427,975	62,794,827	65,450,704	75,450,620	78,394,194
Yield (Tons/Hect)	57.55	56.41	57.88	62.00	59.84
Cane Utilized by Mills	56,460,524	50,795,218	50,042,249	70,989,948	66,635,064
Percentage of utilization	84	80.9	76.45	94.00	85.00
Cane support price Punjab, KP, Sindh	170/172/170	180/182/180	180/182/180	180/182/180	180/***182/180
Average recovery (%)	9.9	10.12	10.16	9.87	9.87
Sugar Production (cane)	5,587,568	5,139,566	5,082,110	7,005,480	6,576,880
Sugar Production (beet)	27,389	22,727	32,791	42,996	
Sugar Production (raw)	-	-	-	-	
Total Sugar Production	5,614,957	5,162,293	5,114,901	7,048,476	
Beginning Stocks 1st Oct.	844,171	1,197,128	1,344,421	950,000	2,473,476
Imports/TCP	**32,259	**28,166	535	-	
Total Available	6,459,128	6,359,421	6,459,322		
Export	750,000	415,000	293,541	425,000	
End Stock 30th Sep. (Mills)	1,197,128	1,344,421	12,65,781 #950,000		
Consumption / Marketing	4,512,000	4,600,000	4,900,000	5,100,000	
Average Consump. / month	376,000	383,333	408,333	425,000	
Season's Av. Retail price / kg	54.80	58.91	63.76	61.43	
Intl. Av. Sugar Trade Price US \$/T	459.28	377.30	460.82		
Molasses Prod. (C+B+R) *	2,524,202	2,247,137	2,246,540	3,095,986	

* C: Cane, B: Beet, R: Raw

** TCP stock as on 31-08-2015(Ignored)

*** Sub Judicious

Sources: FBS, ISO, Zonal Offices

As agreed in SAB meeting

Pakistan Sugar Mills Association Domestic Production, Availability & Consumption Sugar Year Oct. to Sept. 2001-2017

