

18

**ANNUAL REPORT  
2018**



**PAKISTAN SUGAR MILLS ASSOCIATION  
ISLAMABAD**

18

**ANNUAL REPORT  
2018**



**PAKISTAN SUGAR MILLS ASSOCIATION  
ISLAMABAD**

**MANAGEMENT OF  
PAKISTAN SUGAR MILLS ASSOCIATION  
2018-19**

**Central Executive Committee**

1. Mr. Aslam Faruque	Chairman
2. Mr. Javed A. Kayani	Senior Vice Chairman
3. Mr. Nauman A. Khan	Vice Chairman
4. Mr. Asim Ghani	Vice Chairman
5. Mr. Iskander M. Khan	Vice Chairman
6. Mr. Ikram ul Haq	Member
7. Mr. Muhammad Rafique	Member
8. Mr. Ahmed Ebrahim Hashim	Member
9. Dr. Tara Chand	Member
10. Mr. Abdul Qadar Khattak	Member
11. Col. (R) Muhammad Wallayat	Member
12. Mr. Muhammad Bilal Bhatti	Member

**Secretariat**

Mr. Inayatullah Khan  
Secretary General

Office 102, Gulistan Khan House,  
Fazl-e-Haq Road, Blue Area, Islamabad  
Phone: 051-2150073, 2150074,  
051-2150075  
Fax: 051-2150076

Website: [www.psmacentre.com](http://www.psmacentre.com)

E-mail: [psma.centre@gmail.com](mailto:psma.centre@gmail.com)

**ZONAL COMMITTEES  
2018-2019**

**Zonal Committee Punjab**

1. Mr. Nauman A. Khan
2. Mr. Ikram Ul Haq
3. Mr. Muhammad Rafique

Chairman

Member

Member

**Zonal Secretariat**

Mr. Muhammad Arif  
Unit No. 2, Happy Homes  
38-A, Main Gulberg, Lahore

Acting Secretary

Tel: 042-35879840-2

Fax: 042-35752940

Email: info@psma.pk

**Zonal Committee Sindh**

1. Mr. Asim Ghani
2. Mr. Ahmed A. Bawany
3. Mr. Zaid Zakaria

Chairman

Member

Member

**Zonal Secretariat**

Mr. Muhammad Qasim Pahore  
1<sup>st</sup> Floor, Modern Motors House,  
Beaumont Road, Karachi

Secretary

Tel: 021-35686526

Fax: 021-35680344

Email: psma\_sz@ymail.com

**Zonal Committee Khyber Pakhtunkhwa**

1. Mr. Iskander M. Khan
2. Mr. Mirza Nadeem
3. Mr. Rana Munawar Rasheed

Chairman

Member

Member

**Zonal Secretariat**

Mr. Wasiullah  
Premier Sugar Mills &  
Distillery Co. Ltd, Mardan

Acting Secretary

Tel: 0937-862051-52

Fax: 0937-862989

Email: psmdn@premiergroupk.com

**Annual Review**  
**53<sup>rd</sup> Annual General Meeting**  
**Lahore October 11, 2018**

**Distinguished Members of Pakistan Sugar Mills Association,**

I am pleased to present the Annual report of Pakistan Sugar Mills Association, here at the 53<sup>rd</sup> Annual General Meeting. The year under review remained very challenging. All possible efforts were made to seek permission for the disposal of surplus sugar and release of export rebate. PSMA has remained actively engaged in fulfilling all attending responsibilities in addition to careful watch over and encouragement of the corporate social responsibility and promotion of competition.

**2017-18 THE YEAR UNDER REVIEW**

As per crop reports of provincial government's area under cultivation of sugarcane was 1.341 million hectares in 2017-18 with a yield of 83.3 million tons. Sugarcane utilization by mills remained limited to 65.6 million tons i.e., 78.80%. Sugar production as forecasted remained at 6.576 million tons. With a carryover stock inventory of 1.974 million tons from the preceding year total availability was 8.591 million tons of sugar including beet sugar of 40,922 tons. This quantity was almost surplus by 3.391 million tons after defraying domestic requirements of about 5.2 million tons. The sucrose contents in sugarcane marginally improved over last year as 10.02% against 9.87% of the previous year. The following two tables explain the position of area under cultivation of sugarcane & sugar production.

TABLE 1 FIVE-YEAR SUGARCANE STATISTICS OF AREA &amp; YIELD

Year	Area Hectares	Production Tons	Yield Tons/Hectare
2013-2014	1,171,687	67,427,975	57.55
2014-2015	1,113,161	62,794,827	56.41
2015-2016	1,130,820	65,450,704	57.88
2016-2017	1,216,894	75,450,620	62.00
2017-2018	1,340,926	83,289,340	62.11

TABLE 2 FIVE-YEAR STATISTICS OF SUGAR PRODUCTION

Year	No. of Mills	Cane Crushing Tons	Sugar Production Tons	Recovery %
2013-2014	88	56,460,524	5,587,568	9.90
2014-2015	89	50,795,218	5,139,566	10.12
2015-2016	89	50,024,249	5,082,110	10.16
2016-2017	89	70,989,946	7,005,678	9.87
2017-2018	89	65,615,550	6,576,534	10.02

Over the last five years area increased from 1.17 million hectares to 1.340 million hectares i.e. up by 14.4% and production by 23.5. Due to higher sugarcane production in 2017-18 prices of sugar remained subdued due to surplus and there were inordinate delays in making payments to sugarcane farmers. The industry on an average was not able to break even.

### **SUGARCANE AND SUGAR PRICE POSITION 2017-18**

Sugarcane price is fixed by the provincial governments irrespective of relevance with sugar price. There is no mechanism to notify price of sugar after evaluating the cost of producing sugar and to ensure that sale price of the industry does not fall below the level ascertained. This mechanism has been adopted in India for a fair and remunerative price to both the industry and the growers.

This dichotomy still persists and must be addressed by the new government. Our cost of production is almost 63/kg and selling price of sugar hovers around 50-51/kg and even less during the crushing season. The government adopts retail price as our selling price but the ex-mill price is lower by 2-3 /kg. There has been a colossal loss to the industry in the absence of determination of sugar price in the light of sugarcane support price which is meant to appease the farmers to secure rural vote bank by the government resultantly growers and industry suffer the most.

However PSMA continued its efforts to seek permission for the export of surplus sugar so that over-supply could be reduced to bring in a balance between demand and supply.

The retail price structure remained as under:

**TABLE 3**

<b>Sugar Retail Market Average Price 2017-2018</b>	
<b>Month</b>	<b>Rs./KG</b>
October	54.28
November	53.68
December	53.91
January	53.12
February	51.50
March	51.33
April	52.85
May	52.68
June	53.69
July	55.21
August	55.59
September	54.99
<b>Average</b>	<b>53.57</b>

Source: <http://www.pbs.gov.pk/content/price-statistics>

## **EXPORT**

The export rebate was based on a cascading mechanism wherein floor of USD 376 PMT or lower was fixed at 10.70 / kg and in the event of achieving higher export price the rebate was to be reduced correspondingly and at a level of USD 499, there was no entitlement for rebate. In addition it was also decided that if there was any abnormal increase in the domestic price of sugar from the level of Sept 7, 2017 (Rs.54.87/kg) the committee constituted for this purpose was to recommend to the ECC for stoppage of further export.



Since the quantity allowed was not sufficient to off load the quantum of sugar PSMA requested for another SAB meeting in October 2017 and explained the gravity of situation and consequently SAB recommended 1.5 million tons for export which was allowed by ECC of the cabinet in November 2017 with similar conditions as already approved by the ECC in its decision dated 14<sup>th</sup> September, 2017 for timely payment of all the procured sugarcane and start of crushing season on full capacity. It was also decided by the ECC that after crushing season 2017-18 Federal government would not provide any freight support for export and the Provincial governments were directed to develop their own policies for such cause whenever required in future.

After the export of about two million tons of sugar there still remained a surplus and PSMA could not take up the matter with the caretaker government so a considerable time was lost before the new government could call a meeting of the SAB. Upon persuasion MOI called SAB meeting on 11<sup>th</sup> September to review the stock position of sugar.

Chairman PSMA gave a detailed presentation and apprised about the remaining surplus of about two million tons while the board after consulting all stakeholders and getting their input ascertained the stock at 1.962 million tons and thus recommended one million tons of sugar for export. The same was considered by ECC of the Cabinet in its meeting held on October 2, 2018 and approval was made for one million tons of sugar without any export rebate or freight subsidy. This will help to reduce the surplus

inventory however export will be difficult in view of glut in the international market which has impacted the price.

### **DOMESTIC OUTLOOK FOR 2018-19**

Sugarcane production during the last five years has shown an upward trend as the competing crops remained less lucrative for farmers. However for the year 2018-19 we expect a slight shortfall in the sugarcane crop which can modestly affect the sugar production.

The preliminary estimates obtained from the provincial governments reflect a decline by 14.6% in Punjab and 19% in Sindh. With adequate rains the expected decrease is likely to be on the lower side with an overall reduction of about 10%. During 2017-18 out of 83 million tons production mills utilized 78.80% of sugarcane. In 2018-19 about 75 million tons of sugarcane is likely to be available for crushing and depending on mills utilization the estimated production will still be in excess of six million tons.

### **GLOBAL SUGAR SITUATION**

The preceding year crop size created sugar surplus in the international market. In the year under review 2017-18 global production was forecasted at 179.4 million tons compared to 168.4 million tons of the corresponding period of last year showing an increase 6.6%. Similarly consumption went up from 171.5 million tons to 174.4 million tons an increase of 1.7% with a surplus of 5.03 million tons (Table-4).

The variation in the world production and consumption created an imbalance in the world sugar market leading to lower prices making sugar less attractive. Higher

production in Asian countries, in particular India and Thailand led to surplus in the global supply in 2017-18. The reduction in Brazil's production was not significant to impact the global supply and demand balance whereas Brazil has switched almost 53% of the sugarcane juice to produce ethanol thereby restricting sugar production to 47% of the sugarcane produced.

At the end, I would like to thank the Zonal Chairmen, Central and Zonal Executive Committees, all members of PSMA and the Secretaries and staff of PSMA for their continued cooperation and in time support during these recent multipronged challenges faced by the Association.

With profound regards and gratitude,

**JAVED KAYANI**  
**Chairman**  
**11-10-2018**



# Pakistan Sugar Mills Association Annual General Meeting 2018



(1st Row)

Dr. Tara Chand  
Secretary PSMA

Ahmed Ibrahim  
Member PSMA

Sohail Khokhar  
Member PSMA

Muhammad Shakeel  
President PSMA

M Waheed Ch  
Member PSMA

Aslam Farouque  
Member PSMA

Javed Kayani  
Member PSMA

Ikandar M Khan  
Member PSMA

Mian Farwad Ahmed Mukhtar  
Member PSMA

Mr. Muhammad Rafique  
Executive Member (Pw Group)

(2nd Row)

Adnan Maqbool Khan  
Member PSMA

Zafarullah Khan  
Member PSMA

Ch. Muhammad Aslam  
Member PSMA

Abdul Sattar Qureshi  
Member PSMA

Munir Hussain  
Member PSMA

Waqar Ahmad  
Member PSMA

Alli Ahsan Saleem  
Member PSMA

Wasiq Mahmood  
Member PSMA

Ahmed A. Barwary  
Member PSMA

(3rd Row)

Muhammad Aarif  
Secretary PSMA

Inayatullah Khan  
Secretary General

Nauman Ahmed Khan  
Chairman PSMA - 2018  
Executive Director

Ahmad Ali Tariq  
Member PSMA

Iqbal Ullah  
Member PSMA

Ahsan Latif  
Member PSMA

Muhammad Farzan Ch  
Member PSMA

Asif Hussain Bukhari  
Member PSMA

The world sugar market at the lowest level Table-5:

	2017/18	2016/17	2015/16	2014/15	2013/14	2012/13
<b>Production</b>	179,448	168,373	164,253	169,556	174,145	171,804
<b>Consumption</b>	174,414	171,478	169,093	165,938	165,491	163,708
<b>Surplus/Deficit</b>	5,034	-3,105	-4,840	3,618	8,654	8,096
<b>Import Demand</b>	57,467	60,040	66,088	57,772	58,370	60,655
<b>Export Availability</b>	61,094	60,095	66,323	57,895	57,983	60,605
<b>End Stocks</b>	89,618	88,211	91,414	96,489	92,994	83,953
<b>Stocks/Consumption Ratio in %</b>	51.38	51.44	54.06	58.15	56.19	51.28

Source: ISO World Sugar Balance- November, 2017

TABLE 5

<b>International Sugar prices US\$/ton 2017-2018</b>	
<b>Month</b>	<b>Rs/Tonne</b>
October	384.4
November	390.4
December	394.7
January	352.4
February	361.3
March	351.2
April	330.8
May	354.6
June	349.5
July	317.9
August	325.9
September	377.0
<b>Average</b>	<b>357.50</b>

Source: <https://www.investing.com/commodities/london-sugar>

**APPENDIX TO 2018 ANNUAL REPORT  
LIST OF ATTACHED STATISTICAL TABLES**

<b>Table No.</b>	<b>Title of Table</b>	<b>Page No.</b>
<b>SUGAR AND SUGAR CROPS</b>		
TABLE 1	Sugarcane Plantation Area, Prod. Yield And Utilization By Mills	14,15,16
TABLE 2	Sugarcane Crushing, Sugar Prod. & Rec % 2003-2018	17,18
TABLE 3	Beet Sugar Position KP Sugar Mills, 2003-2018	19
TABLE 4	Consolidated Sugar Production, 2003-2018	19
TABLE 5	Molasses Production in Pakistan from cane, beet and raw	20
TABLE 6 (1)	Sugarcane Indicative Price, Mill-gate Delivery	20
TABLE 6 (2)	Sugarcane Indicative Prices vs. Avg. Retail Sugar Price	21
TABLE 7	Retail Price of Essential Commodities vs. Sugar 2008-18	22
TABLE 8 (1)	Mill wise Sugar Position Punjab 2017-18	23
TABLE 8 (2)	Mill wise Sugar Position Khyber Pakhtunkhwa 2017-18	24
TABLE 8 (3)	Mill wise Sugar Position Sindh 2017-18	25
TABLE 8 (4)	Mill wise Sugar Position from Beet 2017-18	26
TABLE 8 (5)	Total Sugar Production of Pakistan (Summary 2017-2018)	26
TABLE 9 (1)	Estimated Gur Equivalent Prod. from Sugarcane Not Milled.	27
TABLE 9 (2)	Sweetener Consumption, Sugar +Gur Equiv. 2003-18	28
TABLE 10	Import of Refined Sugar.2003-2018	29
TABLE10(A)	Import of Raw Sugar. 2003-2018	29
TABLE 11	Export of Sugar. 2003-2018	30
TABLE 12	Export of Molasses. 2003-2018	30

TABLE 13	Export of undenature Ethyl Alcohol. 2003-2018	31
	Avg. Sugarcane Area, Production and Yield (1961 – 2018)	32
	Sugarcane Area, Production and Yield (Graph) (1961 – 2018)	33
	Sugar Consumption kg per capita in Pakistan (Graph) (2003 – 2018)	34
	Seven Years Domestic Monthly Retail Sugar Prices with Graph	35
<b>SUGAR INTERNATIONAL</b>		
	Ten Largest Sugar Producers and Consumers	36
	Ten Largest Net-Exporters and Importers	37
	World Sugar Balance	38
	Seven Years Monthly Refined Sugar Prices (International Trade Market)	39
	Monthly Domestic vs. International Sugar Prices for 2017-18	40
	World Major Cane Sugar Producing Countries	41
<b>MISCELLANEOUS</b>		
	Former PSMA Chairmen	42
	List Of Sugar Mills With Locations & Addresses	43-51
	Sugar Production, Marketing & Stock Situation Season's Final as on 30 <sup>th</sup> Sept. 2018	52
	Sugar and sugarcane summary ten years I- II	53,54
	Domestic Sugar Production, Availability & Consumption (Graph)	
	Domestic Sugar Cane Production (Graph)	

**Abbreviations:**

C.Y	:	Calendar year
CRD	:	Crop Reporting Department
DGTO	:	Directorate General Trade Organization
E.S.P	:	Economic Survey of Pakistan
ECC	:	Economic Coordination Committee
F.B.S	:	Federal Bureau of Statistics
F.Y	:	Fiscal year
FBR	:	Federal Board of Revenue
Hect	:	Hectare
KP	:	Khyber Pakhtunkhwa
M.T	:	Metric Tonnes
MIn	:	Million
MOC	:	Ministry of Commerce
MOIP	:	Ministry of Industries & Production
Mol	:	Molasses
N.A	:	Not Applicable
P.G	:	Provincial Government
Pop	:	Population
Prod	:	Production
PSMA	:	Pakistan Sugar Mills Association
Q.P.	:	Quality Premium
Qty	:	Quantity
Rec.	:	Recovery
S.Y	:	Sugar year
SAB	:	Sugar Advisory Board
SBP	:	State Bank of Pakistan
TCP	:	Trading Corporation of Pakistan



Table 1

**Sugarcane Plantation Area, Production, Yield  
and Utilization by Sugar Mills 2003-2018**

**Pakistan**

Area: Hect.  
Prod: Tonnes  
Yield: Tonnes/Hect.

Year	Area	Production	Yield	Utilization % by mills
2003-04	1,074,700	53,800,000	50.00	81.19
2004-05	966,600	43,533,000	45.04	73.74
2005-06	906,980	44,292,000	48.80	67.94
2006-07	1,029,000	54,871,000	53.00	73.78
2007-08	1,241,300	63,920,000	51.49	82.60
2008-09	1,029,400	50,045,400	48.60	66.21
2009-10	942,870	49,372,900	52.36	70.09
2010-11	987,700	55,442,100	56.13	80.47
2011-12	1,046,000	58,038,200	55.48	83.13
2012-13	1,128,098	63,718,523	56.48	79.00
2013-14	1,171,687	67,427,975	57.55	84.00
2014-15	1,113,161	62,794,827	56.41	80.90
2015-16	1,130,820	65,450,704	57.88	76.45
2016-17	1,216,894	75,450,620	62.00	94.00
2017-18	1,340,926	83,289,340	62.11	78.81

**Punjab**

2003-04	709,000	34,419,000	49.00	83.10
2004-05	645,000	29,332,000	45.47	77.65
2005-06	625,200	28,949,000	46.30	66.81
2006-07	712,000	37,542,000	53.00	70.85
2007-08	872,200	40,306,000	48.73	81.90
2008-09	666,500	32,294,700	48.50	64.02
2009-10	607,420	31,324,000	51.60	66.95
2010-11	672,200	37,481,000	55.75	74.37
2011-12	761,200	42,893,000	56.34	75.07
2012-13	767,670	42,982,070	56.00	74.50
2013-14	756,750	43,704,000	57.75	78.00
2014-15	683,934	41,074,000	60.06	72.50
2015-16	705,350	41,968,200	59.50	68.00
2016-17	777,821	49,613,000	63.78	89.00
2017-18	859,130	55,067,490	64.10	71.73

Source: Provincial Governments (CRD).

<b>Sindh</b>				
	Area: Hect.			
	Prod.: Tonnes			
	Yield: Tonnes/hect.			
Year	Area	Production	Yield	Utilization % by mills
2003-04	260,000	14,612,000	56.00	88.90
2004-05	215,000	9,357,000	43.52	84.59
2005-06	183,180	11,243,000	61.40	81.67
2006-07	215,000	12,529,000	58.00	92.80
2007-08	308,800	18,793,900	60.86	89.05
2008-09	263,900	13,304,300	50.40	76.28
2009-10	233,950	13,505,400	57.70	85.04
2010-11	226,500	13,900,000	60.43	97.84
2011-12	245,000	14,455,000	59.00	92.02
2012-13	253,694	15,966,224	63.00	92.40
2013-14	297,558	18,362,575	61.71	102.48
2014-15	316,749	16,613,835	52.45	104.16
2015-16	312,815	17,984,260	57.49	99.00
2016-17	320,501	20,208,895	63.05	*108.00?
2017-18	333,262	20,611,878	61.85	104.92

**Khyber Pakhtunkhwa**

2003-04	105,000	4,745,000	45.00	43.53
2004-05	106,000	4,816,000	45.43	29.26
2005-06	98,600	4,100,000	41.60	38.23
2006-07	102,000	4,800,000	47.00	46.98
2007-08	104,800	4,792,000	45.73	62.11
2008-09	98,200	4,408,500	44.90	52.48
2009-10	100,800	4,507,900	44.70	47.77
2010-11	88,400	4,030,300	45.59	75.31
2011-12	94,400	4,325,500	45.82	69.47
2012-13	106,734	4,770,229	44.70	70.41
2013-14	117,379	5,361,400	45.68	67.00
2014-15	112,478	5,106,992	45.40	71.83
2015-16	112,655	5,498,244	48.81	67.02
2016-17	118,572	5,628,725	47.47	86.00
2017-18	148,534	7,609,972	51.23	59.32

\* Variation is due to some unreported data on border.  
Source: Provincial Governments (CRD).

Area: Hect.  
 Prod.: Tonnes  
 Yield: Tonnes/Hect.

**Balochistan**

Year	Area	Production	Yield	Utilization % by mills
2003-04	700	34,000	48.57	-
2004-05	600	27,960	46.60	-
2005-06	N.A	N.A	N.A	-
2006-07	N.A	N.A	N.A	-
2007-08	500	28,100	56.20	-
2008-09	800	37,900	47.40	-
2009-10	700	35,600	50.90	-
2010-11	600	30,800	51.00	-
2011-12	700	31,400	44.85	-
2012-13	700	31,000	45.00	-
2013-14	700	31,000	45.00	-
2014-15	N.A	N.A	N.A	-
2015-16	N.A	N.A	N.A	-
2016-17	N.A	N.A	N.A	-
2017-18	N.A	N.A	N.A	-

Source: Provincial Governments (CRD).

**Table 2 Sugarcane Crushing, Sugar Production and Recovery 2003-2018**

Year	Mills	Cane Crushed	Sugar Made	Recovery	Cane Qty:	Tonnes
					Sugar Qty:	Tonnes
Pakistan					Rec.:	Percent
2003-04	71	43,661,378	3,997,010	9.15		
2004-05	71	32,101,739	2,922,126	9.10		
2005-06	74	30,090,632	2,588,177	8.60		
2006-07	77	40,483,977	3,516,218	8.69		
2007-08	78	52,776,922	4,740,913	8.98		
2008-09	82	33,139,418	3,134,145	9.46		
2009-10	83	34,611,003	3,133,494	9.05		
2010-11	84	44,526,719	4,172,729	9.37		
2011-12	86	48,248,535	4,670,380	9.64		
2012-13	86	50,089,483	5,030,129	10.04		
2013-14	88	56,460,524	5,587,568	9.90		
2014-15	89	50,795,218	5,139,566	10.12		
2015-16	89	50,042,249	5,082,110	10.16		
2016-17	90	70,989,948	7,005,480	9.87		
2017-18	89	65,639,963	6,580,111	10.02		
<b>Punjab</b>						
2003-04	38	28,604,925	2,599,490	9.09		
2004-05	38	22,776,832	2,046,633	8.99		
2005-06	40	19,340,641	1,566,047	8.10		
2006-07	41	26,601,603	2,268,174	8.53		
2007-08	42	33,063,564	2,952,784	8.93		
2008-09	45	20,677,089	1,963,957	9.50		
2009-10	45	20,972,969	1,858,161	8.86		
2010-11	44	27,890,459	2,598,085	9.32		
2011-12	44	32,203,007	3,116,348	9.68		
2012-13	44	31,980,732	3,172,408	9.92		
2013-14	44	34,054,518	3,352,795	9.85		
2014-15	45	29,776,144	2,967,266	9.97		
2015-16	45	28,552,068	2,837,761	9.94		
2016-17	45	44,143,322	4,314,227	9.77		
2017-18	45	39,500,168	3,869,003	9.79		

Source: PSMA Zonal Offices/P.G  
05 Non members in Sindh  
01 Non member in KP

**Sindh**

Cane Qty: Tonnes  
 Sugar Qty: Tonnes  
 Rec.: Percent

Year	Mills	Cane Crushed	Sugar Made	Recovery
2003-04	28	12,990,824	1,221,268	9.40
2004-05	28	7,915,416	754,458	9.53
2005-06	28	9,182,553	902,907	9.83
2006-07	29	11,626,978	1,062,411	9.14
2007-08	29	16,737,003	1,561,378	9.33
2008-09	30	10,148,603	976,420	9.62
2009-10	31	11,484,422	1,095,104	9.54
2010-11	33	13,600,800	1,298,989	9.55
2011-12	34	13,040,210	1,267,050	9.72
2012-13	34	14,750,048	1,547,547	10.49
2013-14	37	18,818,581	1,920,819	10.21
2014-15	37	17,304,763	1,822,900	10.53
2015-16	38	17,821,668	1,898,191	10.65
2016-17	38	21,997,817	2,233,925	10.16
2017-18	38	21,625,828	2,281,453	10.55

**Khyber Pakhtunkhwa**

2003-04	5	2,065,629	176,252	8.53
2004-05	5	1,409,491	121,034	8.59
2005-06	6	1,567,438	119,223	7.69
2006-07	7	2,255,395	185,634	8.23
2007-08	7	2,976,356	226,751	7.62
2008-09	7	2,313,725	193,768	8.37
2009-10	7	2,153,612	180,229	8.37
2010-11	7	3,035,460	275,655	9.08
2011-12	7	3,005,318	286,982	9.55
2012-13	7	3,358,702	310,174	9.23
2013-14	7	3,587,425	313,954	8.75
2014-15	7	3,714,311	349,400	9.41
2015-16	7	3,668,513	346,158	9.44
2016-17	6	4,848,809	457,327	9.43
2017-18	6	4,513,966	429,655	9.52

Source: PSMA Zonal Offices/P.G  
 05 Non members in Sindh  
 01 Non member in KP

Table 3

**Beet Sugar Position KP Sugar Mills  
2003-2018**

Year	Mills	Beet Sliced	Sugar made	Qty:	Tonnes
				Rec:	Percent
				Rec.	Molasses
2003-04	3	250,171	23,797	9.51	8,684
2004-05	2	120,903	11,373	9.41	4,287
2005-06	3	93,518	8,934	9.55	3,404
2006-07	1	83,580	7,865	9.04	2,973
2007-08	1	64,095	5,532	8.8	2,576
2008-09	1	9,301	947	10.55	419
2009-10	2	53,336	4,641	9.15	2,140
2010-11	2	151,265	13,535	8.95	7,027
2011-12	2	176,709	18,216	10.31	8,392
2012-13	2	306,341	33,028	10.78	12,040
2013-14	1	251,418	27,389	10.89	8,548
2014-15	1	216,243	22,727	10.51	9,731
2015-16	1	307,366	32,791	10.67	13,831
2016-17	1	400,538	42,996	10.73	18,024
2017-18	1	385,995	40,922	10.60	17,370

Table 4

**Consolidated Sugar Production in Pakistan  
2003-2018**

Year	Cane Sugar	Beet Sugar	Raw Sugar	Qty:	Tonnes
				Total	
2003-04	3,997,010	23,797	-	4,020,806	
2004-05	2,922,126	11,373	182,302	3,115,801	
2005-06	2,588,177	8,934	401,396	2,988,507	
2006-07	3,516,218	7,865	2,860	3,526,943	
2007-08	4,740,913	5,532	5,929	4,752,374	
2008-09	3,134,145	947	-	3,135,092	
2009-10	3,133,494	4,641	-	3,138,135	
2010-11	4,119,418	13,535	39,679	4,172,726	
2011-12	4,652,164	18,216	-	4,670,380	
2012-13	5,030,129		33,028	5,063,158	
2013-14	5,587,568	27,389	-	5,614,957	
2014-15	5,139,566	22,727	-	5,162,293	
2015-16	5,082,110	32,791	-	5,114,901	
2016-17	7,005,480	42,996	-	7,048,476	
2017-18	6,580,111	40,922	-	6,621,033	

Source: PSMA Zonal Offices/P.G

**Table 5** **Molasses Production in Pakistan**  
**from Cane, Raw & Beet**  
**2003-2018**

Year	Qty: Tonnes			
	Punjab	Sindh	K.P	Pakistan
2003-04	1,351,728	667,160	103,211	2,122,099
2004-05	1,039,937	393,287	64,171	1,497,395
2005-06	937,337	458,050	42,568	1,437,954
2006-07	1,222,482	578,833	109,787	1,911,102
2007-08	1,607,042	889,566	167,172	2,663,708
2008-09	928,514	493,079	114,739	1,536,332
2009-10	927,056	529,370	101,131	1,557,457
2010-11	1,249,324	643,651	141,580	2,034,555
2011-12	1,445,830	624,956	153,583	2,224,369
2012-13	1,422,807	663,305	166,639	2,252,751
2013-14	1,495,781	854,225	174,196	2,524,202
2014-15	1,281,768	781,665	183,702	2,247,137
2015-16	1,279,715	787,910	178,914	2,246,540
2016-17	1,877,383	982,451	218,128	3,077,962
2017-18	1,777,508	973,986	203,128	2,954,622

Molasses figures estimated

**Table 6 (1)** **Sugarcane Indicative Price**  
**Mill-Gate Delivery (Per 40 Kg)**

Year	Punjab	Sindh	K.P	Q.P
2003-04	40	41	40	0.50
2004-05	40	43	40	0.50
2005-06	45	60	45	0.50
2006-07	60	67	65	0.50
2007-08	60	67	65	0.50
2008-09	80	81	80	0.50
2009-10	100	102	100	0.50
2010-11	125	127	125	0.50
2011-12	150	154	150	0.50
2012-13	170	172	170	0.50
2013-14	170	172	170	0.50
2014-15	180	182	180	0.50
2015-16	180	172	180	0.50
2016-17	180	182	180	0.50
2017-18	180	182	180	0.50
2018-19	180	182	180	0.50

Source: P.G

Table 6(2)

## Sugarcane Indicative Price per 40 kg in Comparison with Season's Avg. Retail Price per kg 2008-2018

Year	Punjab	Sindh	K.P	Season Avg retail/kg
2008-09	80	81	80	38.72
2009-10	100	102	100	57.11
2010-11	125	127	125	72.72
2011-12	150	154	150	60.99
2012-13	170	172	170	53.25
2013-14	170	172	170	53.82
2014-15	180	182	180	57.14
2015-16	180	172	180	62.60
2016-17	180	182	180	64.94
2017-18	180	182	180	53.91
2018-19	180	182	180	-

Sugarcane indicative price (Rs. per 40 Kg),

Retail price (season's Average/kg)

Source: P.G, E.S.P

\* 2017-18: (July-mar)

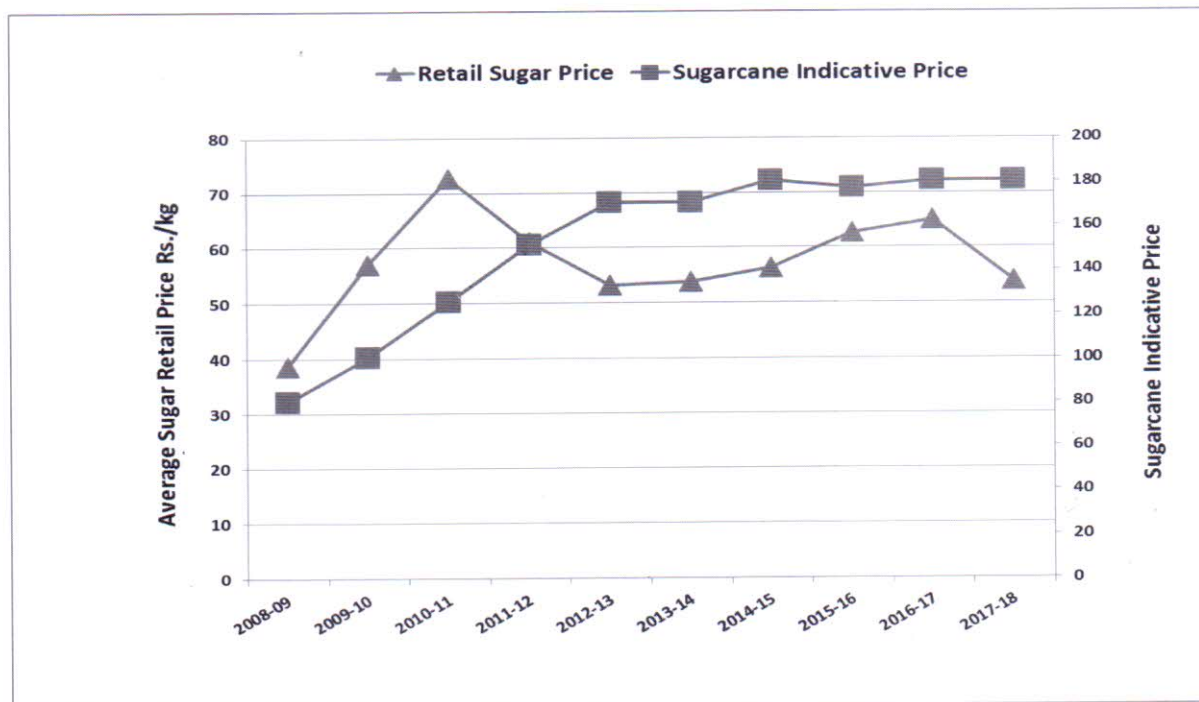


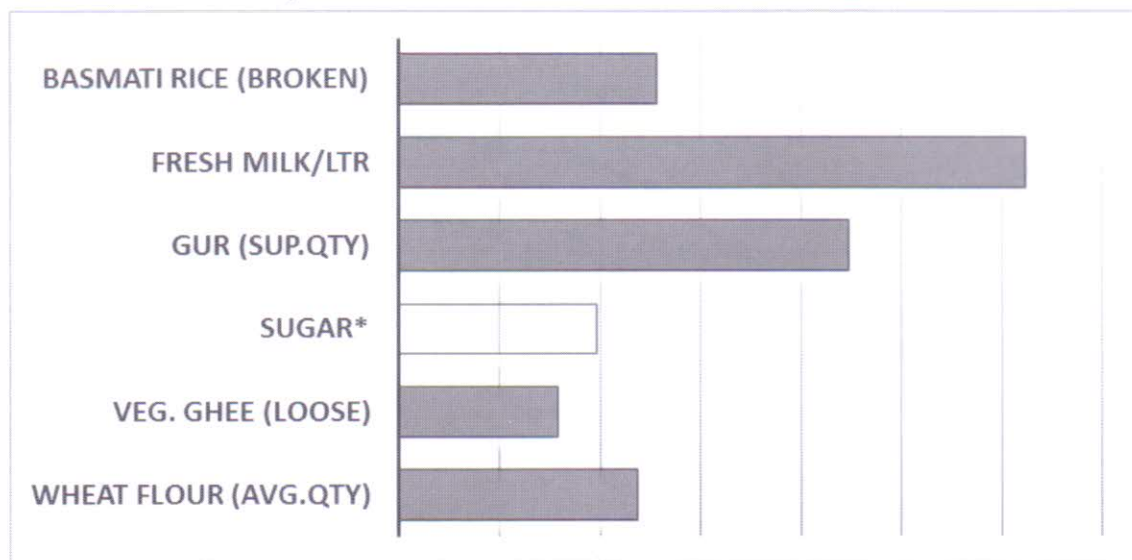


Table 7

Retail Prices of Essential Commodities versus sugar  
2008-2018

Qty/Kg

Years	Wheat Flour (Avg.Qty)	Veg. Ghee (Loose)	Sugar*	Gur (Sup.Qty)	Fresh Milk/ltr	Basmati Rice (Broken)
2008-09	25.64	110.69	38.72	43.65	36.62	47.12
2009-10	28.77	116.04	57.11	70.74	42.32	43.92
2010-11	29.56	150.31	72.72	83.86	50.10	50.32
2011-12	30.26	166.26	60.99	78.27	58.17	60.36
2012-13	34.53	160.73	53.25	74.50	65.24	69.01
2013-14	40.98	160.57	53.82	82.83	69.86	74.09
2014-15	39.58	153.91	56.37	82.96	76.00	73.01
2015-16	38.58	138.35	62.60	89.28	78.24	63.00
2016-17	38.00	143.34	64.94	88.20	80.59	63.90
2017-18	37.79	145.57	53.91	82.67	82.26	71.24
<b>% age</b>	<b>47.42</b>	<b>31.51</b>	<b>39.23</b>	<b>89.39</b>	<b>124.63</b>	<b>51.19</b>

Graph showing Percentage of Price Increase  
(2008-2018)

Source: E.S.P (Fiscal Year)

\* 2017-18 (July-Mar, open market)

Table 8 (1)

Mill wise Sugar Position Punjab  
Season 2017-18

Qty: Tonnes

PUNJAB		Nos, of days	CANE CRUSHED	PROD. TONNES	Rec %	* MOL PROD	Rec %
1	ABDULLAH (Depalpur)		248,386	22,845	9.20	11,177	4.50
2	ABDULLAH (Shahpur)		450,032	24,695	5.49	20,251	4.50
3	ADAM		606,623	57,835	9.53	27,298	4.50
4	ASHRAF		1,062,746	89,765	8.45	47,824	4.50
5	AL-MOIZ-II		1,064,259	107,106	10.06	47,892	4.50
6	BABA FARID		179,638	7,765	4.32	8,084	4.50
7	BROTHERS		SEALED				
8	CHANAR		425,071	40,318	9.49	19,128	4.50
9	CHAUDHRY		62,279		-	2,803	4.50
10	SW (CHISHTIA)		329,003	30,852	9.38	14,805	4.50
11	Imperial/COLONY-I (PHALIA)		Not Operated				
12	JK/COLONY-II (PUNJAB)		640,650	61,345	9.58	28,829	4.50
13	ETIHAD		1,594,614	170,855	10.71	71,758	4.50
14	FATIMA		1,460,568	146,355	10.02	65,726	4.50
15	DARYA KHAN (Fecto)		501,251	45,260	9.03	22,556	4.50
16	HAMZA *		3,665,143	382,495	10.44	164,931	4.50
17	HAQ BAHU		230,223	19,650	8.54	10,360	4.50
18	Haseeb WAQAS *		76,820	5,808	7.56	3,457	4.50
19	HUDA (FAUJI) *		464,196	42,970	9.26	20,889	4.50
20	HUNZA (i)		950,254	83,380	8.77	42,761	4.50
21	HUNZA (ii)		715,818	61,359	8.57	32,212	4.50
22	HUSEIN		600,773	55,331	9.21	27,035	4.50
23	INDUS		1,365,122	148,530	10.88	61,430	3.81
24	ITTEFAQ		227,743	24,137	10.60	10,248	4.50
25	JAUHARABAD		441,646	42,817	9.69	19,874	4.50
26	J.D.W - I (United)		3,753,175	409,507	10.91	168,893	4.24
27	J.D.W - II (United)		2,428,571	255,879	10.54	109,286	4.28
28	TWO STAR		1,698,598	162,514	9.57	76,437	4.50
29	KASHMIR		427,661	38,903	9.10	19,245	4.47
30	LAYYAH *		1,724,085	168,596	9.78	77,584	4.50
31	MACCA		55,505	4,626	8.33	2,498	4.50

Continued.....Punjab							
32	MADINA		1,084,801	103,325	9.52	48,816	4.50
33	NOON		1,008,945	98,655	9.78	45,403	4.50
34	POPULAR		574,486	55,740	9.70	25,852	4.50
35	PATTOKI		585,311	51,045	8.72	26,339	4.50
36	RAMZAN		944,003	90,615	9.60	42,480	4.50
37	RASOOL NAWAZ		337,287	29,255	8.67	15,178	4.50
38	R.Y.K		1,513,644	162,398	10.73	68,114	4.50
39	SAFINA (TIC) Ph-Wali *		973,670	92,192	9.47	43,815	4.50
40	SHAHTAJ		940,405	90,756	9.65	42,318	4.50
41	SHAKARGANJ (I)		308,918	27,239	8.82	13,901	4.50
42	SHAKARGANJ (II)		344,626	31,536	9.15	15,508	4.50
43	SHEIKHOO		1,996,142	195,006	9.77	89,826	4.50
44	TANDLIANWALA-I		583,626	50,148	8.59	26,263	4.50
45	TANDLIANWALA-III		853,851	79,595	9.32	38,423	4.50
<b>TOTAL 2017-2018 (A)</b>			<b>39,500,168</b>	<b>3,869,003</b>	<b>9.79</b>	<b>1,777,508</b>	<b>4.50</b>
TOTAL 2016-2017 (a)			44,143,322	4,314,227	9.77	1,877,383	4.25

\* Molasses figures estimated

**Table 8 (2)**

**Mill wise Sugar Position K.P  
Season 2017-18**

Qty: Tonnes

KHYBER PAKTHUNKHWA		Nos, of days	CANE CRUSHED	PROD. TONNES	Rec %	* MOL PROD	Rec %
1	AI-MOIZ		1,047,033	103,801	9.91	47,116	4.50
2	CHASHMA (Unit-I)		1,290,850	123,893	9.60	58,088	4.50
3	CHASHMA (Unit-II)		749,884	69,430	9.26	33,745	4.50
4	KHAZANA		184,609	18,803	10.19	8,307	4.50
5	PREMIER*		204,775	22,773	9.94	9,215	4.47
6	TANDLIANWALA (ZAMAND)		1,036,816	90,955	8.77	46,657	4.50
<b>Non- Members</b>							
7	BANNU	Not Operated					
<b>TOTAL 2016-2017 (B)</b>			<b>4,513,966</b>	<b>429,655</b>	9.52	<b>203,128</b>	<b>4.50</b>
TOTAL 2015-2016 (b)			4,848,809	457,328	9.43	218,128	4.50

\* Molasses figures estimated

Table 8 (3)

**Mill wise Sugar Position Sindh  
Season 2017-18**

Qty: Tonnes

SINDH		Nos, of days	CANE CRUSHED	PROD. TONNES	Rec %	* MOL PROD	Rec %	
1	AL-ABBAS	135	665,540	74,388	11.18	29,949	4.59	
2	Abdullah Shah Ghazi	70	39,362	3,096	7.87	1,771	4.50	
3	AL-NOOR	139	1,108,106	110,810	10.00	49,865	4.50	
4	ALLIANCE	130	1,180,334	115,930	9.82	53,115	4.50	
5	ANSARI	148	400,039	44,704	9.69	18,002	4.50	
6	ARMYWELFARE	129	322,800	34,895	10.81	14,526	4.50	
7	BAWANY	133	238,915	25,800	10.80	10,751	4.50	
8	BANDI	135	484,794	52,422	10.81	21,816	4.50	
9	CHAMBER	134	342,986	37,729	11.00	15,434	4.50	
10	DEHARKI	132	1,890,612	205,788	10.88	85,078	4.50	
11	DEWAN	121	507,595	53,360	10.51	22,842	4.50	
12	DIGRI	128	342,696	35,345	10.31	15,421	4.50	
13	FARAN	144	959,278	105,633	10.70	43,168	4.50	
14	Gulf	128	959,602	102,824	10.40	43,182	4.50	
15	J.D.W.-III (United)	135	2,240,689	223,325	9.97	100,831	4.50	
16	HABIB	140	1,028,901	106,005	10.30	46,301	4.50	
17	KHAIRPUR	148	828,101	85,625	9.80	37,265	4.50	
18	KHOSKI	133	231,644	25,947	11.20	10,424	4.50	
19	KIRAN	154	479,962	43,246	9.01	21,598	4.50	
20	LARR	144	248,664	27,300	10.98	11,190	4.50	
21	MATIARI	146	513,006	55,742	10.87	23,085	4.50	
22	MEHRAN	141	1,043,279	120,200	11.52	46,948	4.50	
23	MIRPURKHAS	143	774,171	88,183	11.39	34,838	4.50	
24	MIRZA	Not Operated						
25	NAJMA	Not Operated						
26	NAUDERO	154	285,041	31,081	10.90	12,827	4.50	
27	NEW DADU	145	320,754	34,198	10.66	14,434	4.50	
28	PANGRIO	Not Operated						
29	RANIPUR	131	283,089	28,392	10.03	12,739	4.50	
30	SAKRAND	148	367,222	39,660	10.80	16,525	4.50	
31	SANGHAR	142	712,124	73,776	10.36	32,046	4.50	
32	SERI	99	40,364	2,433	6.03	1,816	4.50	

Continued.....Sindh							
33	SHAHMURAD	126	744,578	82,366	11.06	33,506	4.57
34	SINDABADGAR	133	660,056	67,245	10.19	29,703	4.50
35	THARPARKAR	152	324,903	31,693	9.75	14,621	4.50
36	TANDO M. KHAN	Not Operated					
37	S.G.M	129	534,680	54,012	10.10	24,061	4.50
38	TANDO ALLAHYAR	157	521,943	58,202	11.15	23,487	4.50
	<b>Non- Members</b>						
<b>TOTAL 2017-2018 (C)</b>			<b>21,625,828</b>	<b>2,281,453</b>	<b>10.55</b>	<b>973,162</b>	<b>4.50</b>
TOTAL 2016-2017 (c)			21,997,817	2,233,925	10.16	982,451	4.47

\* Estimated

Source: PSMA Zonal Offices/P.G

**Table 8 (4) Mill wise Sugar Position from Beet Season 2017-18**

Qty: Tonnes

KHYBER PAKTHUNKHWA		Nos, of days	BEET SCLICED	SUGAR PROD.	REC %	* MOL PROD.	Rec %
1	AL-MOIZ		385,995	40,922	10.60	17,370	4.50
<b>TOTAL 2017-2018 (C)</b>			<b>385,995</b>	<b>40,922</b>	<b>10.60</b>	<b>17,370</b>	<b>4.50</b>
TOTAL 2016-2017 (c)			400,538	42,996	10.73	18,024	4.50

**Table 8 (5) Total Sugar Production Summary 2017-18**

Qty: Tonnes

	Cane Crushed	Raw Utilized	Beet Sliced	Sugar Prod.			Total Sugar	Mol. C+R+B*
				(Cane)	(Raw)	(Beet)		
<b>Punjab</b>	39,500,168	-	-	3,869,003	-	-	3,869,003	1,777,508
<b>Sindh</b>	21,625,828	-	-	2,281,453	-	-	2,281,453	973,986
<b>K.P</b>	4,513,966	-	385,995	429,655	-	40,922	470,577	220,498
<b>Total 2017-18</b>	<b>65,639,963</b>		<b>385,995</b>	<b>6,580,111</b>		<b>40,922</b>	<b>6,621,033</b>	<b>2,971,992</b>
Total 2016-17	70,989,948	-	400,538	7,005,480	-	42,996	7,048,476	3,095,986

\* Estimated

Source: PSMA Zonal Offices/P.G

Table 9 (1)

**Estimated Gur Equivalent Production  
From Sugarcane Not Milled After Deduction  
for Seed, Fodder and Wastage Etc.**

Qty: Tonnes

1993-94	653,400
1994-95	827,100
1995-96	875,000
1996-97	709,400
1997-98	346,485
1998-99	332,990
1999-00	511,470
2000-01	649,623
2001-02	354,341
2002-03	208,672
2003-04	175,833
2004-05	416,611
2005-06	642,393
2006-07	523,292
2007-08	132,182
2008-09	789,930
2009-10	625,256
2010-11	169,150
2012-13	270,000
2013-14	390,000
2014-15	342,000
2015-16	395,000
2016-17	218,806
2017-18	413,500

Note: Actual Gur equivalent is based on 8.5% recovery.  
These are not Gur production figures.  
(Recovery rate of Gur is 13.5-14.5%)

Table 9 (2)

**Sweetener Consumption in Pakistan  
Sugar plus Gur Equivalent**

Qty: Mln. Metric Tonne

Sugar Year	Population Millions	Sugar Consumption		Gur Equivalent	Total Sweetener	Sweetener kg / capita
		Year's	Kg Per Capita			
2003-04	148.72	3.855	25.92	0.174	4.029	27.09
2004-05	152.53	3.941	25.83	0.416	4.357	28.56
2005-06	153.45	3.846	25.06	0.642	4.488	29.24
2006-07	162.91	3.958	24.29	0.523	4.481	27.50
2007-08	166.41	4.297	25.82	0.132	4.429	26.16
2008-09	169.94	3.628	21.34	0.789	4.410	25.95
2009-10	173.51	4.186	24.12	0.625	4.810	27.72
2010-11	177.10	4.096	23.12	0.169	4.265	24.08
2011-12	180.71	4.385	24.27	0.240	4.625	25.59
2012-13	184.35	4.420	24.60	0.270	4.690	25.44
2013-14	188.02	4.512	24.00	0.390	4.902	26.07
2014-15	191.71	4.600	24.00	0.342	4.942	25.78
2015-16	195.40	4.904	25.10	0.395	5.299	25.12
2016-17	199.1	5.100	25.65	0.219	5.310	26.80
2017-18	207.77	5.200	25.10	0.200	5.400	26.00

Source: - Pop: Economic Survey 2017-18

Sweetener: - Sugar + Gur

**Pakistan Sugar Mills Association Sweetener  
Consumption kg/capita in Pakistan**

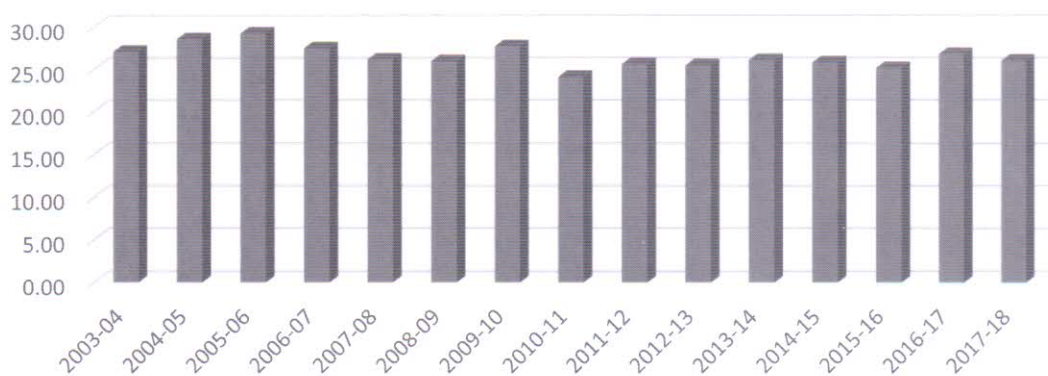


Table 10

**Import of Refined Sugar  
2003-2018**

Qty: M/T  
Value: '000' Rs.  
Avg. Price: Rs./MT

*Year	Quantity	Value	Avg. Price
2003-04	11,398	188,509	16,539
2004-05	266,707	5,288,976	19,606
2005-06	1,527,322	37,365,929	24,465
2006-07	586,543	15,721,704	26,804
2007-08	36,692	912,073	24,858
2008-09	125,743	4,505,407	35,830
2009-10	370,000	14,811,000	40,029
2010-11	1,031,919	58,669,007	56,854
2011-12	17,221	1,166,825	67,756
2012-13	7,308	500,644	68,506
2013-14	9,824	635,370	64,675
2014-15	10,056	631,427	62,791
2015-16	535	28,517	53,303
2016-17	8,923	535,447	53,960
2017-18	8,713	553,682	63,547

Table 10 (A)

**Import of Raw Sugar  
2003-2018**

*Year	Quantity	Value	Avg. Price
2003-04	264	-	-
2004-05	185,604	-	-
2005-06	472,039	7,794,642	16,512
2006-07	11,033	N.A	-
2007-08	714	N.A	-
2008-09	-	-	-
2009-10	-	-	-
2010-11	-	-	-
2011-12	-	-	-
2012-13	-	-	-
2013-14	-	-	-
2014-15	-	-	-
2015-16	-	-	-
2016-17	-	-	-
2017-18	-	-	-

Source: PBS (July-June)



Table 11

Export of Sugar  
2003-2018Qty: MT  
Value: '000' Rs.  
Avg. Price: Rs/MT

*Year	Quantity	Value	Avg. Price
2003-04	116,175	1,589,210	13,679
2004-05	54,771	1,028,710	18,782
2005-06	61,047	1,590,555	26,055
2006-07	12	330	27,500
2007-08	260,840	5,738,856	22,015
2008-09	23,980	639,677	26,675
2009-10	-	-	-
2010-11	-	-	-
2011-12	48,672	2,575,403	52,913
2012-13	1,064,215	51,692,066	48,573
2013-14	647,333	29,638,230	45,785
2014-15	708,356	32,685,502	46,143
2015-16	293,541	13,817,628	47,072
2016-17	307,348	16,867,358	54,880
2017-18	1,469,802	56,379,067	38,358

Table 12

Export of Molasses  
2003-2018

*Year	Quantity	Value	Avg. Price
2003-04	1,457,283	2,698,964	1,852.05
2004-05	1,151,431	4,297,617	3,732.00
2005-06	497,161	2,612,342	5,255.00
2006-07	373,177	1,704,034	4,566.00
2007-08	780,807	3,490,864	4,471.00
2008-09	936,338	7,486,584	7,996.00
2009-10	961,300	7,784,000	8,097.36
2010-11	86,437	892,087	10,321.00
2011-12	55,608	577,981	10,394.00
2012-13	225,221	2,747,341	12,198.00
2013-14	197,342	2,510,421	12,721.00
2014-15	83,229	1,010,347	12,139.00
2015-16	73,067	874,398	11,967.00
2016-17	101,410	1,217,122	12,001.00
2017-18	168,962	2,114,533	12,515.00

Source: PBS (July-June)

Table 13

## Export of undenature Ethyl Alcohol

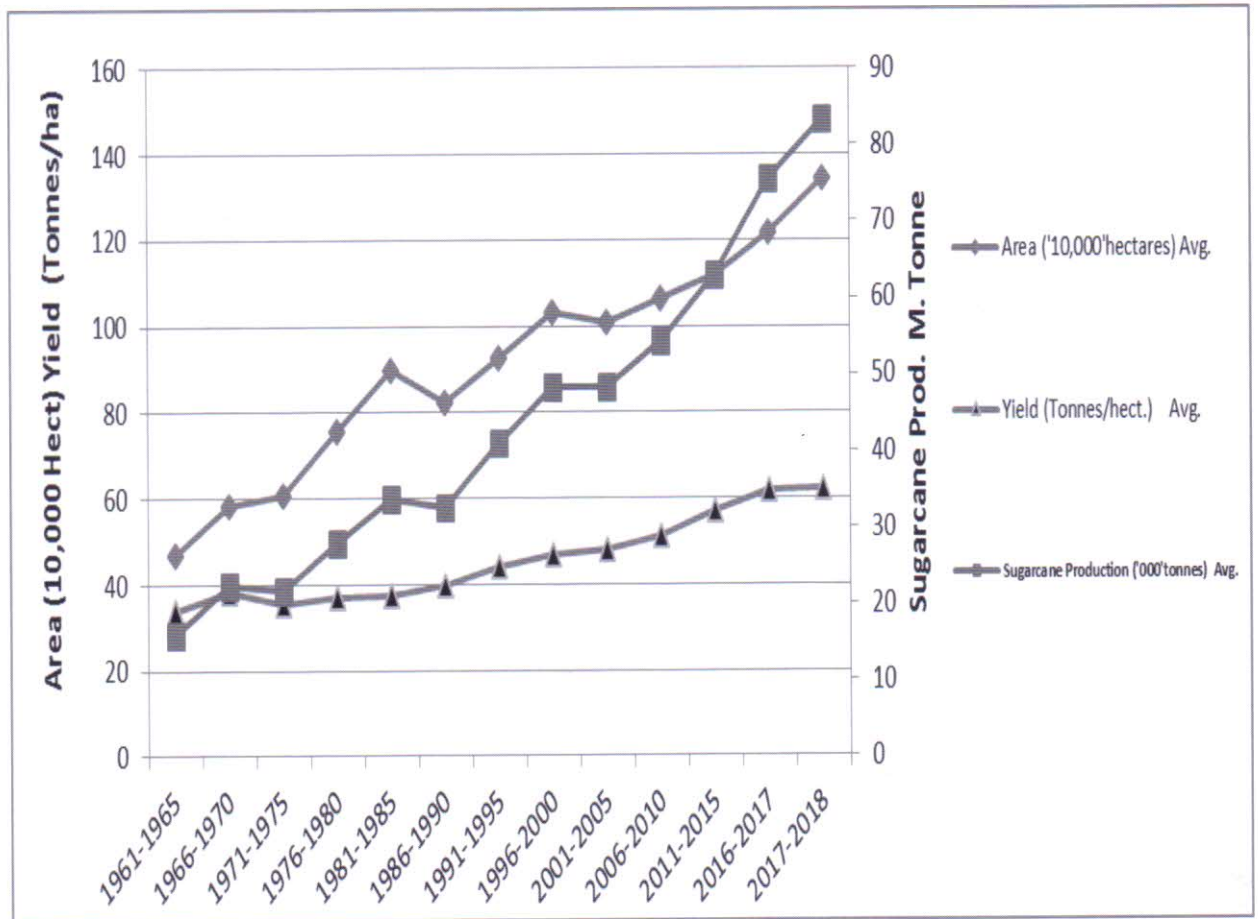
*Year	Quantity	Value	Avg. Price
2003-04	35,921,065	692,840	19.29
2004-05	36,669,688	1,067,445	29.00
2005-06	33,789,535	1,066,048	32.00
2006-07	34,116,438	1,122,000	32.00
2007-08	28,609,832	892,222	31.19
2008-09	27,045,396	1,209,025	44.70
2009-10	101,260,099	4,679,269	46.21
2010-11	168,509,200	9,506,883	56.00
2011-12	215,814,894	14,234,428	65.96
2012-13	142,065,426	8,735,649	61.49
2013-14	492,476,805	32,168,695	65.21
2014-15	421,881,994	25,749,257	61.00
2015-16	396,940,741	22,929,248	58.00
2016-17	358,483,301	29,330,083	82.00
2017-18	699,791,482	42,512,352	61.00

Qty: Liters  
 Value: '000' Rs.  
 Avg. Price: Rs./Liter

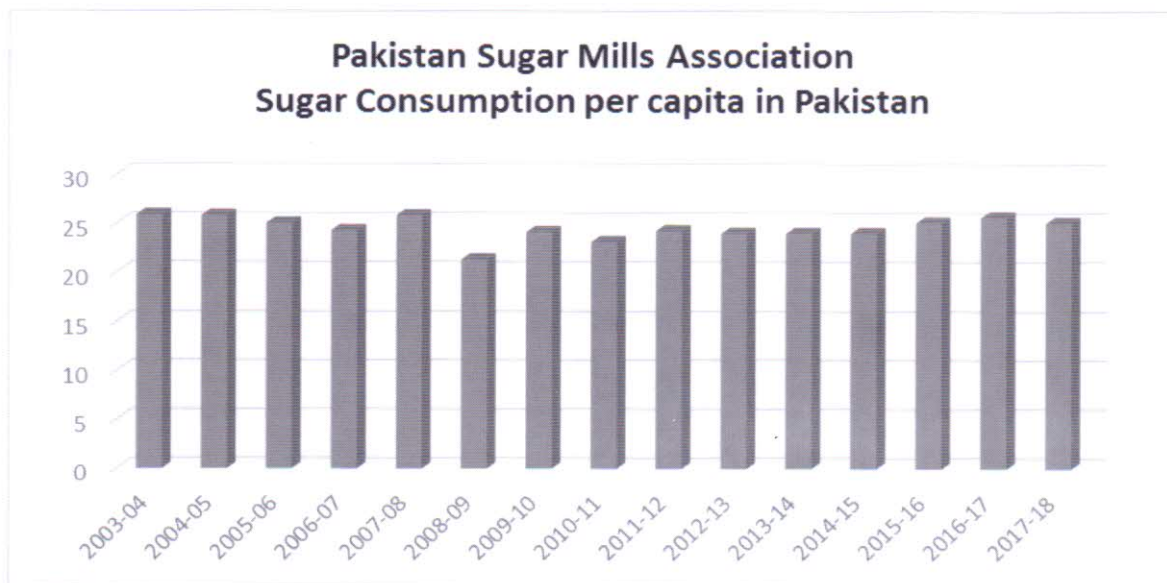
Source: PBS (July- June)

Pakistan Sugar Mills Association			
Avg. Sugarcane Area, Production and Yield Tonnes/ha Projected 1961- 2018			
Years	Area (‘000’hectares) Avg.	Sugarcane Production (‘000’tonnes) Avg.	Yield (Tonnes/ha) Avg.
1961-1965	469	15,849	33.79
1966-1970	582	22,312	38.34
1971-1975	608	21,647	35.60
1976-1980	757	27,994	36.98
1981-1985	897	33,580	37.44
1986-1990	823	32,656	39.68
1991-1995	927	40,902	44.12
1996-2000	1,030	48,371	46.96
2001-2005	1,009	48,343	47.91
2006-2010	1,063	54,365	51.10
2011-2015	1,118	62,975	57.27
2016-2017	1,217	75,451	62.00
2017-2018	1,341	83,289	62.11

Source: PG(CRD)



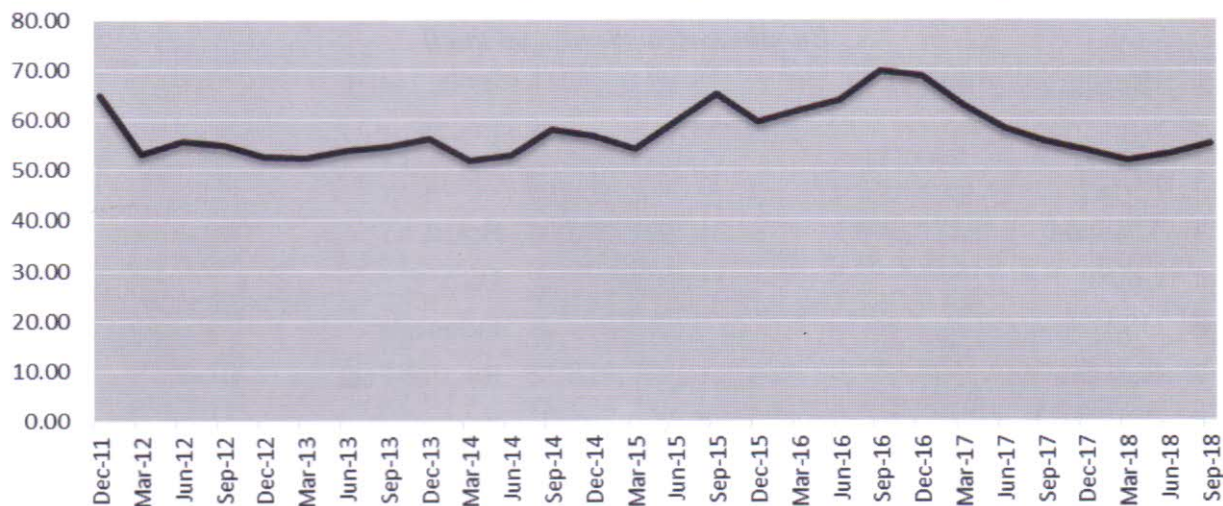
Source: CRD

**Sugar Year****Sugar per capita**

2003-04	25.92
2004-05	25.83
2005-06	25.06
2006-07	24.29
2007-08	25.82
2008-09	21.34
2009-10	24.12
2010-11	23.12
2011-12	24.27
2012-13	24.00
2013-14	24.00
2014-15	24.00
2015-16	25.10
2016-17	25.65
2017-18	25.10

Source: SAB 2017-18

Domestic Monthly Retail Sugar Prices Rs. Per Kg



Months	2011-12	2012-13	2013-14	2014-15	2015-16	2016-17	2017-18
Oct	72.01	50.53	55.68	59.17	61.55	71.04	54.28
Nov	67.25	54.07	58.86	56.78	59.56	71.80	53.68
Dec	55.52	53.04	54.12	54.12	57.14	63.68	53.91
Jan	52.39	52.52	51.39	53.92	59.80	64.86	53.12
Feb	50.44	51.83	51.25	54.23	62.80	63.12	51.50
Mar	56.39	52.89	53.35	54.28	62.93	60.41	51.33
Apr	56.48	53.79	52.60	56.92	63.76	59.97	52.85
May	55.22	53.66	52.27	59.53	63.75	58.46	52.68
Jun	55.66	54.50	53.84	62.49	64.37	56.48	53.69
Jul	55.25	54.90	55.92	65.41	67.34	55.04	55.21
Aug	55.25	54.68	57.83	65.36	71.17	56.88	55.59
Sep	54.11	54.50	60.49	64.75	71.03	55.45	54.99
<b>Average Retail Rs.</b>	<b>57.16</b>	<b>53.41</b>	<b>54.80</b>	<b>58.91</b>	<b>63.76</b>	<b>61.43</b>	<b>53.57</b>

Source: PBS

## 10 Largest

<i>10 LARGEST SUGAR PRODUCERS</i>		<i>10 LARGEST SUGAR CONSUMERS</i>		
<i>(in mln metric tonnes, tel quel)</i>				
1	Brazil	38.10	1 India	24.52
2	India	22.45	2 EU-28	18.00
3	EU-28	17.52	3 China	16.09
4	Thailand	10.78	4 Brazil	10.92
5	China	9.31	5 USA	10.09
6	USA	7.51	6 Indonesia	6.75
7	Russian Fed.	6.59	7 Russian Fed.	5.80
8	Pakistan	6.55	8 Pakistan	5.07
9	Mexico	6.05	9 Mexico	4.44
10	Australia	4.48	10 Egypt, Arab R.	3.60
<i>10 LARGEST CANE SUGAR PRODUCER</i>		<i>10 LARGEST BEET SUGAR PRODUCERS</i>		
<i>(in mln metric tonnes, tel quel)</i>				
1	Brazil	38.10	1 EU-28	17.28
2	India	22.45	2 Russian Fed.	6.59
3	Thailand	10.78	3 USA	4.34
4	China	8.10	4 Turkey	2.78
5	Pakistan	6.53	5 Ukraine	2.07
6	Mexico	6.05	6 Egypt, Arab Rep.	1.33
7	Australia	4.48	7 China	1.22
8	USA	3.17	8 Iran	1.07
9	Guatemala	2.74	9 Belarus	0.60
10	Philippines	2.56	10 Japan	0.57

Source: - ISO Sugar Year Book 2018 data 2017

<b>10 Largest</b>											
<b>10 LARGEST NET-EXPORTERS (in mln metric tonnes, tel quel)</b>											
<b>TOTAL</b>			<b>RAW SUGAR</b>			<b>WHITE SUGAR</b>					
1	Brazil	28.70	1	Brazil	23.33	1	Brazil	5.37			
2	Thailand	6.94	2	Australia	3.73	2	Thailand	3.68			
3	Australia	3.84	3	Thailand	3.26	3	India	1.85			
4	Guatemala	1.84	4	Cuba	1.06	4	EU-28	1.34			
5	Cuba	1.12	5	Guatemala	0.90	5	UAE	0.97			
6	Mexico	1.04	6	Mexico	0.88	6	Guatemala	0.94			
7	Pakistan	0.62	7	El Salvador	0.41	7	Pakistan	0.61			
8	Ukraine	0.60	8	Philippines	0.38	8	Ukraine	0.60			
9	Eswatini	0.51	9	South Africa	0.29	9	Algeria	0.47			
10	Colombia	0.51	10	Nicaragua	0.25	10	Mauritius	0.42			
<b>10 LARGEST NET-IMPORTERS (in mln metric tonnes, tel quel)</b>											
<b>TOTAL</b>			<b>RAW SUGAR</b>			<b>WHITE SUGAR</b>					
1	Indonesia	4.64	1	Indonesia	4.50	1	China	1.47			
2	China	3.27	2	China	2.44	2	Sudan	1.23			
3	USA	2.74	3	Bangladesh	2.33	3	South Africa	0.72			
4	Bangladesh	2.41	4	Algeria	2.21	4	USA	0.65			
5	Malaysia	1.85	5	USA	2.10	5	Uzbekistan	0.59			
6	Algeria	1.74	6	EU-28	1.96	6	Sri Lanka	0.58			
7	Egypt	1.58	7	Malaysia	1.94	7	Israel	0.39			
8	Korea, Rep. of	1.52	8	China	1.80	8	Syria	0.38			
9	Nigeria	1.29	9	Korea, Rep. of	1.73	9	Saudi Arabia	0.34			
10	Japan	1.24	10	Egypt	1.44	10	Ghana	0.33			

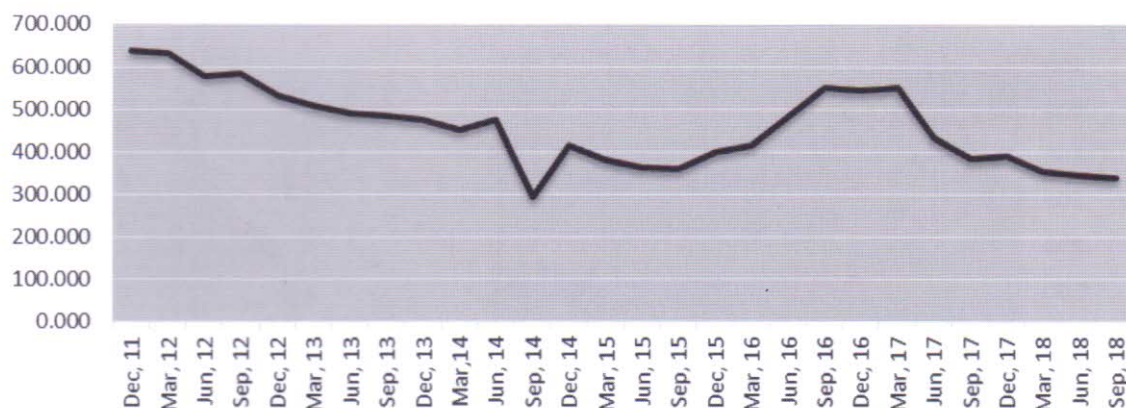
Source: - ISO Sugar Year Book 2018 data 2017



World Sugar Balances (October/September) in thousand tonne, raw value							
	2018/19	2017/18	2016/17	2015/16	2014/15	2013/14	2012/13
Production	180,488	182,703	169,594	164,141	169,393	174,146	171,804
Consumption	178,316	175,423	172,441	169,989	166,920	165,344	163,572
Surplus/deficit	2,172	7,280	-2,847	-5,848	2,473	8,802	8,232
Import demand	59,356	56,694	65,324	66,228	58,278	58,361	60,655
Export availability	60,410	59,686	65,317	66,283	58,257	57,917	60,579
End stocks	39,363	92,245	85,957	88,797	94,700	92,206	82,960
Stocks/ consumption ratio in %	52.36	52.58	49.85	52.24	56.73	56.19	50.72

Source: - ISO World Sugar Balance November, 2018

## International Trade Market Monthly Refined Sugar Price US \$/Tonne



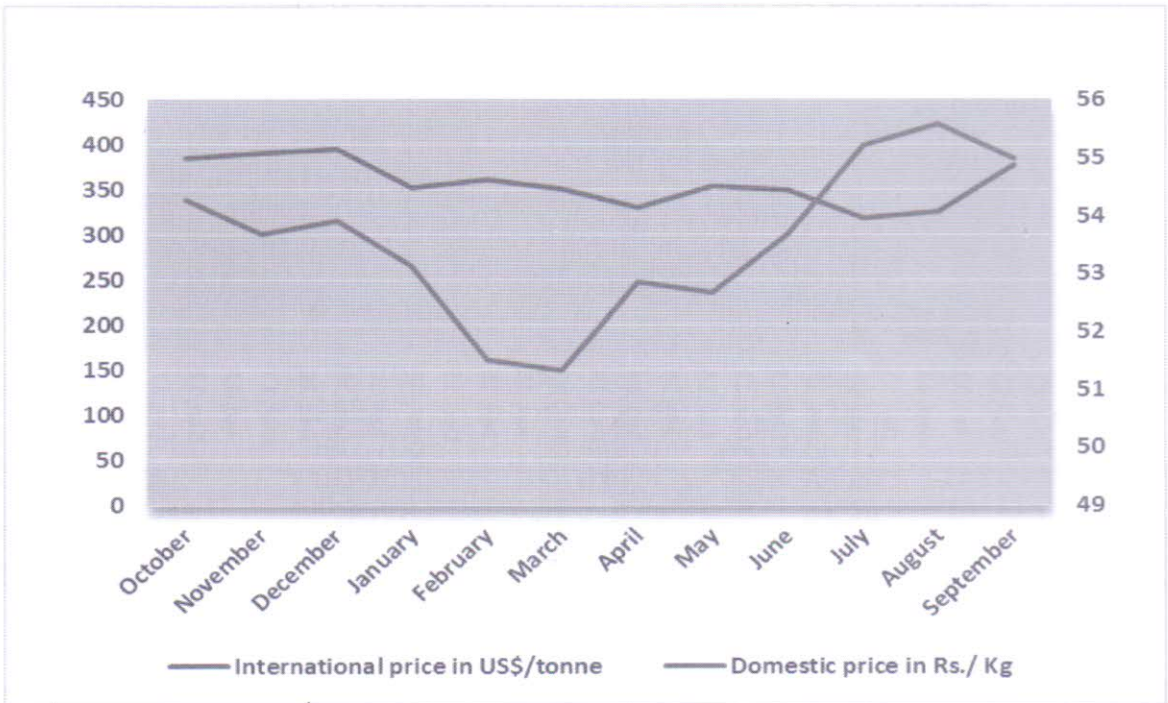
### ISO Monthly Average Prices of Refined Sugar

US \$/Tonne

Months	2011-12	2012-13	2013-14	2014-15	2015-16	2016-17	2017-18
October	676.87	557.85	499.90	428.59	388.48	579.40	384.4
November	635.55	521.88	471.25	420.59	400.87	526.40	390.4
December	604.92	518.54	449.61	397.97	409.23	524.20	394.7
January	620.66	505.36	424.34	397.80	415.73	540.00	352.4
February	634.83	499.06	454.76	384.33	388.39	532.60	361.3
March	638.24	518.01	471.84	364.95	436.29	577.20	351.2
April	601.56	500.88	468.19	367.38	438.45	459.50	330.8
May	555.14	482.20	478.00	365.28	474.05	434.80	354.6
June	571.02	483.03	476.27	352.15	527.53	403.70	349.5
July	621.14	477.42	458.03	358.72	541.33	402.30	317.9
August	568.77	484.63	437.52	341.01	538.80	386.90	325.9
September	560.65	485.20	421.61	348.83	570.70	362.20	377.0
Avg. Price	607.45	502.84	461.25	383.78	460.82	477.43	357.50

Source: [www.investing.com/commodities/London-sugar](http://www.investing.com/commodities/London-sugar)

**Monthly Domestic & International Sugar Prices Comparison  
For Sugar Year 2017-18**



### World Major Cane sugar Producing Countries Five Year Production & Ranking

“000” Tonne raw value (Oct. – Sept.)

S. #	Name	2017-18	2016-17	2015-16	2014-15	2013-14	Ranking
1	Brazil	31,900	38,900	37,750	33,896	37,811	1
2	India	32,000	20,500	25,500	28,310	24,396	2
3	Thailand	14,674	9,865	9,750	11,296	11,284	3
4	China	10,310	9,300	8,700	10,556	14,218	4
5	U.S.A	7,720	7,390	7,450	7,592	7,169	5
6	Mexico	6,007	5,957	6,119	5,985	6,021	6
<b>7</b>	<b>Pakistan</b>	<b>6,615</b>	<b>7,047</b>	<b>5,325</b>	<b>5,948</b>	<b>5,347</b>	<b>7</b>
8	Russia	6,458	6,100	5,200	4,638	4,772	8
9	Australia	4,800	5,000	4,950	4,909	4,012	9
10	France	5,250	4,125	3,670	3,880	4,969	10
11	Germany	4,715	3,375	3,415	3,769	4,394	11
12	Guatemala	2,745	2,750	2,883	2,976	2,858	12
13	Indonesia	2,250	2,200	2,475	2,507	2,528	13
14	Philippines	2,085	2,200	2,150	2,274	2,480	14
15	Turkey	2,700	2,400	2,040	2,053	2,332	15

Source: World Sugar Balances November, 2018

#### World Sugar Production 2017-18 (Est)

Total Production:	182.703	Mln tonnes
Sugar production from Cane:	141.600	Mln tonnes
Sugar production from Beet:	41.100	Mln tonnes

Source: ISO Quarterly market outlook of November 2018

**Former Chairmen  
Pakistan Sugar Mills Association (PSMA)**

1971-1972	Mr. Ahmed Ibrahim
1972-1973	Mr. Taj Muhammad Khanzada
1973-1974	Ch. Bashir Ahmed
1974-1975	Mr. M. Akram
1975-1976	Mr. Taj Muhammad Khanzada
1976-1977	Mr. Mian Bashir Ellahi
1977-1978	Mr. M. Akram
1978-1979	Mr. Taj Muhammad Khanzada
1979-1980	Malik Manzoor Hayat Noon
1980-1982	Mr. M. Akram
1982-1983	Mr. Taj Muhammad Khanzada
1983-1984	Mr. Altaf M. Saleem
1984-1985	Mr. M. Akram
1985-1986	Mr. Taj Muhammad Khanzada
1986-1987	Mr. Altaf M. Saleem
1988-1990	Mr. M. Akram
1990-1992	Syed Abbas Shah
1992-1994	Mr. Altaf M. Saleem
1994-1996	Mr. Ismail Zakaria
1996-1998	Mr. Abbas Sarfaraz Khan
1998-2000	Mr. S. M. Tahir
2000-2002	Mr. Ashraf W. Tabani
2002-2004	Mr. Iskander M Khan
2004-2006	Ch. M Zaka Ashraf
2006-2008	Mr. Shunaid Qureshi
2008-2010	Mr. Iskander M Khan
2010-2012	Mr. Javed A. Kayani
2012-2014	Mr. Shunaid Qureshi
2014-2016	Mr. Iskandar M Khan
2016-2018	Mr. Javed A. Kayani
2018-2019	Mr. Aslam Faruque (Current)

### Zone wise List of Sugar Mills Locations and Districts

#### PUNJAB

Mills Name & Address	Tel & Fax	Mills Location/ Dist.
<b>1. Abdullah Sugar Mills Ltd. (unit-I),</b> 6-F, Model Town, Lahore	Ph. (042)-35917321-3 Fx. (042)-35917317 Email: pa.md@hwgc.com.pk	Depalpur Okara
<b>2. Abdullah Sugar Mills Ltd. (unit-II),</b> 6-F, Model Town, Lahore	Ph. (042)-35917321-3 Fx. (042)-35917317 Email: pa.md@hwgc.com.pk	Shahpur Sargodha
<b>3. Adam Sugar Mills Ltd.,</b> 345-A/1, Gulberg-III, Lahore.	Ph. (021)-32417812-17 (042)-35757216 Fx. (021)-32427560 (042)-35874220 Email: adamsm.lhr@outlook.com adamsugar2@gmail.com	Chistian Bahawalnagar
<b>4. Liaison Office</b> 345-A-I, Gulberg-III, Opp-Wyeth Laboratories, Lahore.	P & F (042)-35757216 Fx. (042)-35874220	
<b>5. Ashraf Sugar Mills Ltd.,</b> 11-Upper Mall, Lahore.	Ph. (042)-35717333-555/35717222 Fx. (042)-35716999 E.mail: info@asml.org.pk	Ashrafabad Bahawalpur
<b>6. Baba Farid Sugar Mills Ltd.,</b> 42-G, Firdous Market, Gulberg III, Lahore	Ph. 042-35884180-5 Fx. 042-35711068 E.mail: qaisarabbas@gmail.com imporientchemicals@gmail.com	Faisalabad Okara
<b>7. Brother Sugar Mills Ltd.,</b> 135-Upper Mall, Lahore.	Ph. (042)-35757013-16 Fx. (042)-35710417 E.mail: bsml_lhr@yahoo.com	Chunian Kasur
<b>8. Chanar Sugar Mills Ltd.,</b> 7-A, New Muslim Town, Lahore.	Ph. (042)-35868077-78 Fx. (042)-35862264 E.mail: javedkayani@gmail.com masifamil.fca@gmail.com	Faisalabad
<b>9. Chaudhry Sugar Mills Ltd.,</b> 146- Abu Bakar Block, New Garden Town, Lahore	Ph. (042)-35858135 -6 Fx. (042)-35858477 E.mail: sharifwl@wol.net.pk	Gojra Toba Tek Singh
<b>10. Chishtia Sugar Mills Ltd.,</b> 75, Sarfaraz Rafique Road Lahore, Cantt	Ph. (042)-3668334-2 Fx. (042)-35762187 E.mail: csml@wol.net.pk	Sillanwali Sargodha

<b>11. IMPERIAL SUGAR MILL – I.,</b> Ismail, Aiwan-e-Science Building, 205 -Ferozpur Road, Lahore.	Ph. (042)-35758970-72 Fx. (042)-35763247 E.mail: waqar.bandey@imperialsugars.com	<b>Phalia MandiBahauddin</b>
<b>12. IMPERIAL SUGAR MILL - II .,</b> Ismail, Aiwan-e-Science Building, 205 -Ferozpur Road, Lahore.	Ph. (042)-35758970-72 Fx. (042)- 35763247 E.mail: waqar.bandey@imperialsugars.com	<b>Mian Channu Khanewal</b>
<b>13. Etihad Sugar Mills Ltd.,</b> 3, Upper Mall, Bawa Park, Lahore	Ph. (042)-35877921-23 (042)- 35751865-66 Fx. (042)- 35712293 E.mail: sohail.dil@etihad.com.pk shakeel@tapl.com	<b>Karamabad Rahimyar Khan</b>
<b>14. Fatima Sugar Mills Ltd.,</b> Fatima Trust plaza LMQ, Road, Multan.	Ph. 061-4512031 042-111-328-462 Fx. 061-4884282 E.mail: fatmagrp@mul.paknet.com.pk muhammad.amjad@fatima-group.com	<b>Kot Addu Muzafargarh</b>
<b>15. Darya Khan Sugar Mills Ltd.,</b> 42-G, Firdous Market, Gulberg III, Lahore.	Ph. (042)- 35884180-5 Fx. (042)- 35884138 Email: qaissarabbas@gmail.com imporientchemicals@gmail.com	<b>Darya Khan Bhakhhar</b>
<b>16. Gunj Buksh (Pasrur) Sugar Mills Ltd.,</b> (non Member) 21/ 69, F.C.C, Green Villas, Gulberg-II, Lahore.	Ph. (042)- 35752123/ 3252759 FX. (042)- 35760329/ 047-76310011 E.mail: csml@wol.net.pk	<b>Toba Road Jhang</b>
<b>17. Hamza Sugar Mills Ltd.,</b> A/22, S.I. T. E. Mauripur Road, Karachi	Ph. (021)-32561101-5/ 068-5582256 Fx. (021)- 2561873/ 068-5582043 E.mail: hamza_sugar@yahoo.com	<b>Khanpur Rahimyar Khan</b>
<b>18. Haq Bahu Sugar Mills Ltd.,</b> 65-Infantry Road, Military Accounts Colony, Lahore Cantt.	Ph. (042)-36834016-22 Fx. (042)-36811253 E.mail: Inf@maccagroup.com	<b>Layyah Road Jhang</b>
<b>19. Haseeb Waqas Sugar Mills Ltd.,</b> 6-F, Model Town, Lahore.	Ph. (042)-35917321-3 Fx. (042)-35917317 E.mail: hwg@brain.net.pk pa.md@hwgc.com.pk	<b>Nankana Sahib</b>
<b>20. Huda Sugar Mills Pvt Ltd.,</b> Askari Villas # 2, Army Housing Scheme, Sarwar Shaheed Road, Lahore	Ph. (042)- 36682935 041- 2560884 Fx. (042)- 36681599 (041)-2669090 E.mail: irfanfmhsm@hotmail.com	<b>Sangla Hill Nankana Sahib</b>

<b>21. Hunza Unit –I &amp;II Sugar Mills Ltd.,</b> 1-A, New Muslim Town, Lahore.	Ph. 042-111-161-161 042-35882941-4 Fx.. 042-35882945/35862245 E.mail: hunzasugar.headoffice@gmail.com	<b>Shahkot Faisalabad</b>
<b>22. Husein Sugar Mills Ltd.,</b> 30-A/E-1, old FCC Gulberg III, Behind Gaddafi Stadium, Lahore.	Ph. (042)-35762089-90 Fx. (042)-35712680 E.mail: info@huseinsugarmills.com	<b>Jaranwala Faisalabad</b>
<b>23. Indus Sugar Mills Ltd.,</b> 17-Tipu Block, New Garden Town, Lahore	Ph. (042)-35882801-2 Fx. (042)-35835180 E.mail: indussugar10@hotmail.com khokharsohail@hotmail.com	<b>Kot Bahadur RajanPur</b>
<b>24. Ittefaq Sugar Mills Ltd.,</b> 40-B-II, Gulberg III, Lahore	Ph. (042)-35765021-6 Fx. (042)-35759546 E.mail: alshafi@brain.net.pk	<b>Pakpattan Pakpattan</b>
<b>25. Jauharabad Sugar Mills Ltd.,</b> 109-A Street No. 03 , Cavalry Ground, Lahore.	Ph. (042)- 37175229/ 36670031 Fx. (042)- 37175256 E.mail: amtax@jsml.com.pk www.jsml.com.pk	<b>Jauharabad Khushab</b>
<b>26. JDW-1 Sugar Mills Ltd.,</b> 17- Abid Majeed Road, Lahore -Cantt	Ph. (042)-36664891-92 Fx. (042)-36654490 E.mail: jdwho@brain.net.pk sabir@jdw-group.com	<b>Mouza Shirin Rahimyar Khan</b>
<b>27. JDW-II (United) Sugar Mills Ltd.,</b> 17- Abid Majeed Road Lahore Cantt.	Ph. (042)- 36664891-92 Fx. (042)-36654490 E.mail: mjaffar@jdw.group.com sabir@jdw-group.com	<b>Sadiqabad Rahim Yar Khan</b>
<b>28. Kamalia Sugar Mills Ltd.,</b> C/o Punjab Beverages Co. (Pvt) Ltd Nisar Colony, Samundri Road, Faisalabad Askari Villas # 2, Sarwar Road, Lahore Cantt.	Ph. (041)-8660270/866370 Fx. (041)- 8660700 E.mail: maqsood_anwar@hotmail.com Ph. 0463-700175/177 Fx. 042-36681599	<b>Kamalia Toba Tek Singh</b>
<b>29. Kashmir Sugar Mills Ltd.,</b> 40-B-II, Gulberg -III, Lahore	Ph. (042)-35765021-6 Fx. (042)-35759546 E.mail: alshafi@brain.net.pk	<b>Shorkot Jhang</b>
<b>30. Layyah Sugar Mill Ltd.,</b> 2D-1, Gulberg III, Lahore.	Ph. (042)-35771066-71 Fx. (042)-35756687 E.mail: nauman.khan@almoiz.com info@almoiz.com	<b>Layyah</b>



<b>31. Macca Sugar Mills Ltd.,</b> 65- Infantry Road, Lahore Cantt.	Ph. Fx. E-mail:	(042)-36834016-20 (042)-36811253 farrukh@maccagroup.com maccagroup@yahoo.com	<b>Manga Road Kasur</b>
<b>32. Madina Sugar Mills Ltd.,</b> Gate 4, University town Faisalabad, Sargodha Road, Faisalabad.	Ph. Fx. E. mail:	(041)-8869891-96 (041)-8869899 acc1msm@madinahgroup.com.pk A=fm.msm@madinahgroup.com.pk	<b>Chiniot</b>
<b>33. Noon Sugar Mills Ltd.,</b> 4 Sarwar Road, Near Rahat Bakeri Lahore Cantt.	Ph. Fx. E. mail:	(042)-36655777 (042)- 35788468 iqbal.talib@noonsugar.net info@noonsugar.net	<b>Bhalwal Sargodha</b>
<b>34. Popular<sup>(Ex-National)</sup> Sugar Mills Ltd.,</b> 311-Chapal Plaza, Hasrat Mohani Road, II Chundrigar Road, Karachi	Ph. Fx. E. mail:	(042)- 37465670 (0486)-886281-3 (042)- 37414866 chairman@populargroup.com.pk gm.psm1@populargroup.com.pk	<b>Jan Muhammadwala Sargodha</b>
<b>35. Pattoki Sugar Mills Ltd.,</b> 42-G, Firdous Market, Gulberg III, Lahore.	Ph. Fx E. mail:	(042)- 35884180-5 (042)- 35711068 qaisarabbas@gmail.com imporientchemicals@gmail.com	<b>Pattoki Kasur</b>
<b>36. Ramzan Sugar Mills Ltd.,</b> 55-K, Model Town Lahore	Ph. Fx. E. mail:	(042)- 35857234-5 (042)- 35857232 sharif@wol.net.pk ikram@sgroup.pk	<b>Chiniot Jhang</b>
<b>37. R.Y. K Sugar Mills Ltd.,</b> 75/4D Sarfaraz Rafiqi Road, Lahore Cantt.	Ph. Fx. E. mail:	(042)-36601381-4/(068)-5882101 (042)-36601385 info@rykmills.com	<b>Rahim Yar Khan</b>
<b>38. SAFINA SUGAR MILL</b> 2D-1, Gulberg III, Lahore	Ph. Fx. E. mail:	(042)-35771070-71 (042)-35771068 (042)-35756687/35771175 nauman.khan@almoiz.com info@almoiz.com	<b>Lalian Jhang</b>
<b>39. Shahtaj Sugar Mills Ltd.,</b> 72/C-1, Gulberg III Lahore	Ph. Fx. E. mail:	(042)-35710482-84 (042)-35711904 shahtajsugar@gmail.com mail@shahtajsugar.com	<b>Mandi Bahauddin Gujrat</b>
<b>40. Shakarganj (I) Sugar Mills Ltd.,</b> Toba Tek Singh Road, Jhang, Jhang.	Ph. Fx. E. mail:	(0477)-631001 / 5 (047)-7652801-05 (047)-652811 m.bashir@shakarganj.com.pk parvez@shakarganj.com.pk	<b>Toba Road Jhang</b>

<b>41. Shakarganj -II Mills Ltd.,</b> 57 KM Jhang Sargodha Road Addah Bhone, 10th Floor, 10-B, Block E-II Main Boulevard, Gulberg III, Lahore	Ph.	(042)-35783801-3	<b>AddaBhone</b>
	Fx.	(042)-35870357 (047)-7223017	<b>Jhang</b>
	E.mail:	akhtar.habib@shakarganj.com.pk hussain.malik@shakarganj.com.pk	
<b>42. Rasool Nawaz Sugar Mills (Pvt) Ltd,</b> Gourmet Foods (unit 6) Mauza Bhubatian Stop, Main Defence Road, Lahore.	Fx.	(042)- 35321736 (042)- 35213794	<b>Gojra Faisalabad</b>
	E.mail:	ranarayasat@gourmetpakistan.com Rana Rayasat 0300-6661654	
<b>43. Sheikho Sugar Mills Ltd.,</b> 11-F Commercial Area, Phase-1 D.H.A Lahore, Lahore Cantt.	Ph.	(042)- 35728901-4-6 (042)- 35893531	<b>Kot Adu Muzafargarh</b>
	Fx.	(042)- 35728904 Yousuf_ssml@hotmail.com	
	E.mail:	shakeelsheikh@hotmail.com	
<b>44. Tandlianwala-I&amp;II Sugar Mills Ltd.,</b> 66-L, Gulberg II, Lahore.	Ph.	042- 35750220 (042)- 35715081-6	<b>Kanjwani</b>
	Fx.	(042)- 35710929	<b>Faisalabad</b>
	E.mail:	ahmad_lodge@yahoo.com farid@pepsi-lahore.com.pk	

**SINDH**

Mills Name & Address		Tel & Fax	Mills Location / Dist.
<b>1. Abdullah Shah Ghazi Sugar Mills Ltd.,</b> 65-Infantry Road, Military Accounts Colony, Lahore	Fx: E-mail:	(042)-36834016- 22 (042)-36811253 info@maccagroup.com	<b>Gharo Thatta</b>
<b>2. Al-Abbas Sugar Mills Ltd.,</b> Pardeis House, Survey # 2/1, R.Y – 16, Old Queens Road, Karachi 74000.	Ph. Fx. E-mail:	021-32470220-9 021-32470087 021-32470090/32470467 sugar@cyber.net.pk	<b>MirwahGorchani Mirpurkhas</b>
<b>3. Al-Noor Sugar Mills Ltd.,</b> 96-A, Sindhi Muslim Society, Karachi	Ph. Fx. E.mail:	021-34550161-3 021-34551990 021-34556675 alnoor@fascom.com	<b>Taluka Moro Nawabshah</b>
<b>4. Alliance Sugar Mills. Pvt. Ltd</b> 50/3-A Tufail Road Lahore Cantt.	Ph. Fax Email	042-36660051-52 021-36660065 info@alliancesugar.com	<b>Ubauro Ghotki</b>

<b>5. Ansari Sugar Mills Ltd.,</b> 2nd Floor, Block-4, Hockey Club Of Pakistan stadium, Karachi.	Ph. Fx. E.mail:	021-35655131-4 021-35680533 naudero@cyber.net.pk	<b>Matli Hyderabad</b>
<b>6. Army Welfare Sugar Mills Ltd,</b> Army welfare Trust, AWT Plaza, 6th Floor, The Mall, Rawalpindi.	Ph. Fx. E.mail:	(0297) 861205 (0297) 861733 awsm@awt.com.pk	<b>Badin</b>
<b>7. Bawany Sugar Mills Ltd.,</b> 2 <sup>nd</sup> Floor, Block-4, Hockey Club of Pakistan Stadium, Karachi	Ph. Fx. E.mail:	021-35655131-4 021-35680533 naudero@cyber.net.pk kmajid@cyber.net.pk	<b>Talhar Badin</b>
<b>8. Bandhi Sugar Mills Ltd.,</b> 2nd floor, Continental Trade Center, Main Clifton Road, Karachi,	Ph. Fx. E.mail:	021-3503215-19	
<b>9. Chamber Sugar Mills</b> 2 <sup>nd</sup> Floor, Block-4, Hockey Club of Pakistan Stadium, Karachi	Ph. Fx. E.mail:	021-35655131-4 021-35680533	
<b>10. Dewan Sugar Mills Ltd.,</b> 7th floor, Block- Finance & Trade Centre Main Shahra-e-Faisal Karachi.	Ph. Fx. E.mail:	021-111-364-111 021-35630814 dewanyousuf@dewangroup.com.pk	<b>Budho Talpur Thatta</b>
<b>11. Deharki Sugar Mills Ltd.,</b> 17-Abid Majid Road, Lahore Cantt	Ph. Fx. E.mail:	042- 36664891-96 042- 36654490	<b>District Ghotki</b>
<b>12. Digri Sugar Mills Ltd.,</b> 48 J /1, Block 6, P.E.C.H.S. Karachi.	Ph. Fx. E.mail:	021-34541195-8 021- 34534501 digri@cyber.net.pk	<b>Digri Mirpurkhas</b>
<b>13. Faran Sugar Mills Ltd.,</b> 14-H, PECHS, Block 6, Shahra-e-faisal Karachi	Ph. Fx. E.mail:	021- 34322851-4 021- 34322864 info@faran.com.pk	<b>Sheikh Bhirkio Hyderabad</b>

<b>14. Gulf Sugar Mills Ltd.,</b> 64-E-1, Gulberg III Lahore.	Ph. Fx. E.mail:	(042)-35870192-96 (042)-35760466	
<b>15. J.D.W-III (Ghotki) Sugar Mills Ltd.,</b> 17-Abid Majeed Road, Lahore Cantt.	Ph. Fx. E.mail:	042-36664891-96 042-36654490 jdwho@brain.net.pk jdwho@jdw-group.com	<b>Channu Ghotki</b>
<b>16. Habib Sugar Mills Ltd.,</b> 3rd Floor, Imperial Courts, Dr. Ziauddin Ahmed Road, Karachi	Ph. Fx. E.mail:	(021)- 35680036-9 (021)- 35684086 sugar@habib.com	<b>Nawabshah</b>
<b>17. Khairpur Sugar Mills Ltd.,</b> 3 <sup>rd</sup> Floor, Plot No. 15-C, 9 <sup>th</sup> Phase-V, Commercial Lane, Zamzama, D.H.A Karachi.	Ph. E.mail:	(021)- 35810771-5 (021)- 35810776 headoffice@jumanigroup.com	<b>NarooDhoro Khairpur</b>
<b>18. Khoski Sugar Mills Pvt. Ltd.</b> 2nd Floor, Hockey Club of Pakistan Stadium, Karachi	Ph. Fx: E.mail:	(021)-35655131-4 (021)-35680533 kmajid@cyber.net.pk	<b>Khoski Badin</b>
<b>19. Kiran Sugar Mills Pvt. Ltd.</b> Noman Goth Duber Road, Rohri Dist, Sukkur	Ph. Fx: E.mail:	071- 5623561 071- 5623564 kiransugarmillsLtd@gmail.com	<b>Khoski Badin</b>
<b>20. Larr Sugar Mills Ltd.,</b> 2nd Floor, Hockey Club, Pakistan Stadium, Karachi	Ph. Fx. E.mail:	(021)- 35655131- 4 (021)-35680533 lsml@cyber.net.pk	<b>DehKinjhar – Sajawal Thatta</b>
<b>21. Matiari Sugar Mills Ltd.,</b> C-48, KDA Scheme No.1 Karachi. 75350	Ph. Fx. E.mail:	(021)-345213823/ 34529698 (021)- 34541734 matsug@attglobal.net	<b>Matiari Hyderabad</b>
<b>22. Mehran Sugar Mills Ltd.,</b> 14-B, 14 <sup>th</sup> floor, Dolmen City, Executive Tower, HC-3, Block # 04, Marine Drive, Clofton Karachi	Ph. Fx. E.mail:	(021)-35297814 (021)- 35297818-27 msm@mehransugar.com	<b>Tando Allah Yar Hyderabad</b>
<b>23. Mirpurkhas Sugar Mills Ltd.,</b> 2 <sup>nd</sup> Floor, Modern Motors House,  Beaumont Road, Karachi.	Ph. Fx. E.mail:	(021)-111-345-111/ 35682565-7 (021)-35682839 msmho@sat.net.pk saeed.uuzaman@gfg.com.pk	<b>Mirpurkhas Mirpurkhas</b>
<b>24. Mirza Sugar Mills Ltd.,</b> 10 <sup>th</sup> Floor, Lakson Square, Building No. 1, Portion 'B', Sarwar Shaheed Road, Karachi	Ph. Fx. E.mail:	(021)-35680151/35680148 (021)- 35680183 msml1@cyber.net.pk	<b>Deh Charo Tappo Badin</b>

<b>25.Najma Sugar Mills Ltd.,</b> Sikander House F-58, Park Lane Block -5 Clifton, Karachi	Ph. Fx. E.mail:	(021)-35831082/35870321 (021)-35831069 nsml@khi.comsets.net.pk	<b>Jhuddo</b> <b>Mirpurkhas</b>
<b>26.Naudero Sugar Mills Ltd.,</b> 2 <sup>nd</sup> Floor, Hockey Club, Pakistan Stadium, Karachi.	Ph. Fx. E.mail:	(021)-35655131-4 (021)-35680533 naudero@cyber.net.pk	<b>Naudero</b> <b>Larkana</b>
<b>27.New Dadu Sugar Mills Ltd.,</b> 2 <sup>nd</sup> Floor, Block # 4, Hockey Club of Pakistan Stadium ,Karachi	Ph. Fx. E.mail:	(021)-35655131-4 (021)-35680533 kmajid@cyber.net.pk	<b>Piarogoth</b> <b>Dadu</b>
<b>28.Pangrio Sugar Mills Ltd.,</b> 10 <sup>th</sup> Floor Lakson Square, Building No. 1 Portion 'B' Sarwar Shaheed Road, Karachi	Ph. Fx. E-mail:	(021)- 35680151/35680148 (021)- 35680183 psml2@cypber.net.pk	<b>Deh Rajauri-2</b> <b>Badin</b>
<b>29.Ranipur Sugar Mills Ltd.,</b> C-98, Kehkashan, Scheme-5, Clifton, Karachi.	Ph. Fx. E.mail:	(021)-5291731-7 (021)-34314857 ranipursugar@gmail.com	<b>Ranipur</b> <b>Khairpur</b>
<b>30.Sakrand Sugar Mills Ltd.,</b> 41-K, Block -6 , P.E.C.H.S., Karachi	Ph. Fx. E.mail:	(021)-111-484-848/34531637 (021)-34531642 (021)- 34546456/34535374 admin@sakrandsugar.com	<b>Qazi Ahmed</b> <b>Nawabshah</b>
<b>31.Sanghar Sugar Mills Ltd.,</b> 101- Ocean Centre Talpur Road, Karachi	Ph. Fx. E.mail:	(021)-35371441-3 (021)- 35371444 info@sangharsugarmills.com	<b>Sindhri</b> <b>Sanghar</b>
<b>32.Seri Sugar Mills Ltd.,</b> 1 <sup>st</sup> Floor, Hussain Ali Centre, M.A Jinnah Road, Karachi.	Ph. Fx. E.mail:	(021)-32439630 (021)-32437828 (021)-32413600 tabani@cyber.net.pk	<b>Deh Norai Jagir</b> <b>Hyderabad</b>
<b>33.Shahmurad Sugar Mills, Ltd.,</b> 96-A, Sindhi Muslim Society, Karachi	Ph. Fx. E.mail:	(021)-34550160-3 (021)-34556675 alnoor@fascom.com	<b>Jhok Sharif</b> <b>Thatta</b>
<b>34.Sindh Abadgar's Sugar Mills Ltd.,</b> 209, 2 <sup>nd</sup> Floor, Progressive plaza, Beaumont Road, Karachi	Ph. Fx. E.mail:	(021)-35638212-138 (021)-35638219 sasm@fascom.com	<b>Deenpur</b> <b>Hyderabad</b>
<b>35.TMK Sugar Mills Ltd.,</b> 1 <sup>st</sup> Floor, Hassan Ali Centre, Opp. M.W. Tower, M.A. Jinnah Road, Karachi.	Ph. Fx. E.mail:	(021)-32439630 (021)-32437828 (021)-32413600 tabani@cyber.net.pk	<b>TMK</b> <b>Hyderabad</b>

<p><b>36.SGM Sugar Mills Ltd.,</b> <b>(Sardar Ghulam Mohammad)</b> National Hockey Stadium Gate No. 16, Gulberg, Lahore</p>	<p>Ph. 042-32404550-2 Fx. (042)-32404554 E.mail: info@sgmsugar.com</p>	<p><b>Jarwah</b> <b>Road,</b> <b>Ghotki</b></p>
<p><b>37.Tharparkar Sugar Mills Ltd.,</b> 108/ 03, 3<sup>rd</sup> Avenue, Block # 5, Main Clifton, Near Police Club, Karachi</p>	<p>Ph. (021)-35863730/ 38065903 (021)-35467613 Fx. (021)-35863729 E.mail: tharparkarsugar@yahoo.com</p>	<p><b>Tharparkar</b> <b>Mirpurkhas</b></p>
<p><b>38.Tandoallayar Sugar Mills Ltd.,</b> 2<sup>nd</sup> Floor, Hockey Club of Pakistan Stadium, Karachi</p>	<p>Ph. (021)- 35655131-4 Fx. (021)- 35680533 E.mail:</p>	

**KHYBER PAKHTUNKHWA**

Mills Name & Address		Tel & Fax	Mills Location/ Dist.
<p><b>1. Chashma-I Sugar Mills Ltd.,</b> Unit1, University Road, Dera Ismail Khan</p>	<p>Ph. Fx. E. Mail:</p>	<p>(0966)750090-91 (0966)750092 csmdik@brain.net.pk</p>	<p><b>D.I. Khan</b></p>
<p><b>2. Chashma-II Sugar Mills Ltd.,</b> Unit 2, Ramak, Dera Ismail Khan</p>	<p>Ph. Fx.</p>	<p>(0966)756365, 756365 (0966)756327</p>	<p><b>D.I. Khan</b></p>
<p><b>3. Tandlianwala Sugar Mills Ltd.</b> (Ext. Zamand) 66-L, Gulberg II, Lahore.</p>	<p>Ph. Fx. E.mail:</p>	<p>0966-756153/756158 0966-756301/756298 tsmlzamand@yahoo.com farid@pepsi-lahore.com.pk</p>	<p><b>Miran</b> <b>Dera Ismail</b> <b>Khan</b></p>
<p><b>4. Al-Moiz Industries Ltd.,</b> 2-D-1, Gulberg-III, Lahore</p>	<p>Ph. Fx. E. mail:</p>	<p>(042)-35771066-71 0966-720910 (042)-35756687/35771175 nauman.khan@almoiz.com</p>	<p><b>Chashma</b> <b>D.I. Khan</b></p>
<p><b>5. Bannu Sugar Mills Ltd.,</b> SeraiNaurang, Bannu</p>	<p>Ph. Fx.</p>	<p>(0969)-351022/ 352444 (0969) 350112</p>	<p><b>SeraiNaurang</b> <b>Bannu</b></p>
<p><b>6. Premier Sugar Mills Ltd.,</b> Mardan.</p>	<p>Ph. Fx. E.mail:</p>	<p>0937-862051-2 0966-606370 0937-862989 psmmdn@premiergroup.pk</p>	<p><b>Mardan</b></p>
<p><b>7. Khazana Sugar Mills Ltd.,</b> Khazana, Peshawar</p>	<p>Ph. Fx.</p>	<p>091-2041694/2045732 091-2040550</p>	<p><b>Peshawar</b></p>

**Sugar Production Marketing & Stock  
Summary (Season 2017-18)  
as on 30<sup>th</sup> September, 2018**

	Area: hect.	
	Prod: tonnes	
	Yield: T/hect	
Sugarcane Plantation Area		1,340,926
Sugarcane Production		83,289,340
Average Yield		62.11
	<b>Sugarcane Crushing</b>	<b>Sugar Produced</b>
Punjab	39,500,168	3,869,003
Sindh	21,625,828	2,281,453
KP	4,513,966	429,655
(Cane sugar) <b>Total</b>	<b>65,639,963</b>	<b>6,580,111</b>
Sugar refined from raw		-
Sugar produced from beet		40,922
<b>Total sugar produced</b>		<b>6,621,033</b>
Carryover stock (2016-17)		2,473,476
*Import/TCP stock <sub>(31-08-2018)</sub>		-
<b>Total Availability (2017-18)</b>		<b>9,094,509</b>
<b>Export (2017-18)</b> (Source: PBS)		<b>1,469,802</b>
<b>Total consumption (2017-18)</b> @ 26.00 kg/capita		<b>5,200,000</b>
<b>Carry Forward (2018-19)</b>		<b>2,424,707</b>

\* Ignored

Source: PSMA Zonal Offices/ P.G

Monthly Retail Sugar Price Rs. per KG (2017-18)

October	54.28
November	53.68
December	53.91
January	53.12
February	51.50
March	51.33
April	52.85
May	52.68
June	53.69
July	55.21
August	55.59
September	54.99
<b>Average</b>	<b>53.57</b>

Source: PBS

<b>Sugarcane &amp; Sugar – I</b>					
<b>Sugar Year (Oct-Sept.)</b>	<b>2009-10</b>	<b>2010-11</b>	<b>2011-12</b>	<b>2012-13,</b>	<b>2013-14</b>
Sugarcane Area (Hect)	942,870	987,700	1,046,000	1,128,098	1,171,687
Sugarcane produced	49,372,860	55,444,100	58,038,200	63,718,523	67,427,975
Yield (Tonnes/Hect)	52.36	56.4	55.48	56.5	57.55
Cane Utilized by Mills	34,604,070	44,511,571	48,248,535	50,089,483	56,460,524
percentage of utilization	70.09	82.36	83	80	84
Cane support price Punjab, KP / Sindh	100/100/102	125/125/12 7	150/150/15 2	170/170/172	170/172/170
Average Recovery (%)	9.05	9.25	9.68	10.04	9.9
Sugar Production (Cane)	3,132,709	4,119,516	4,652,164	5,030,129	5,587,568
Sugar Production (Beet)	4,641	13,535	18,216	33,028	27,389
Sugar Production (Raw)		39,678	-	-	-
Total Sugar Production	3,137,350	4,172,729	4,670,380	5,063,158	5,614,957
Beginning Stocks 1st Oct.		1,033,003		*1,394,013	844,171
Imports/TCP	478,155	755,417	-	**25,043	**32,259
Total Available	4,482,062	5,205,732	5,779,701	6,457,171	6,459,128
Export		Nil	48,672	1,193,000	750,000
End Stock 30th Sep.	100,000	1,109,321	1,394,013	844,171	1,197,128
Consumption / Marketing	4,186,062	4,096,411	4,385,688	4,420,000	4,512,000
Average Consumption / month	348,839	341,367	365,688	368,333	376,000
Season's Av. retail price Rs./ kg	63.41	72.82	57.16	53.41	54.80
International Sugar Price US \$/Tonne	574.52	709.37	607.45	502.84	459.28
Molasses Prod. (C+B+R)*	1,557,457	2,034,729	2,207,632	2,252,751	2,524,202

\* Cane + Beet + Raw

Sources: FBS, ISO, Zonal Offices



Sugarcane & Sugar – II					Estimates
Sugar Year(Oct-Sept.)	2014-15	2015-16	2016-17	2017-18	2018-19
Sugarcane area (hect)	1,113,161	1,130,820	1,216,894	1,340,926	1,115,556
Sugarcane produced(Tonnes)	62,794,827	65,450,704	75,450,620	83,289,340	67,729,535
Yield ( Tonnes/Hect)	56.41	57.88	62.00	62.11	60.71
Cane Utilized by Mills	50,795,218	50,042,249	70,989,948	65,639,963	
Percentage of utilization	80.9	76.45	94.00	78.80	
Cane support price Punjab, KP, Sindh	180/182/180	180/182/180	180/182/180	180/182/180	180/182/180
Average recovery (%)	10.12	10.16	9.87	10.02	10%
Sugar Production (cane)	5,139,566	5,082,110	7,005,480	6,580,111	5,420,000
Sugar Production (beet)	22,727	32,791	42,996	40,922	42,000
Sugar Production (raw)	-	-	-	-	-
Total Sugar Production	5,162,293	5,114,901	7,048,476	6,621,033	
Beginning Stocks 1st Oct.	1,197,128	1,344,421	950,000	2,473,476	2,424,707
Imports/TCP	**28,166	535	-	-	
Total Available	6,359,421	6,459,322	7,998,476	9,094,509	
Export	415,000	293,541	425,000	1,469,802	
End Stock 30th Sep. (Mills)	1,344,421	12,65,781 #950,000	2,473,476	2,424,707	
Consumption / Marketing	4,600,000	4,900,000	5,100,000	5,200,000	
Average Consump. / month	383,333	408,333	425,000	4,33,333	
Season's Av. Retail price / kg	58.91	63,76	61.43	53.57	
Intl. Av. Sugar Trade Price US \$/T	377.30	460.82	477.43	357.50	
Molasses Prod. (C+B+R) *	2,247,137	2,246,540	3,095,986	2,971,992	

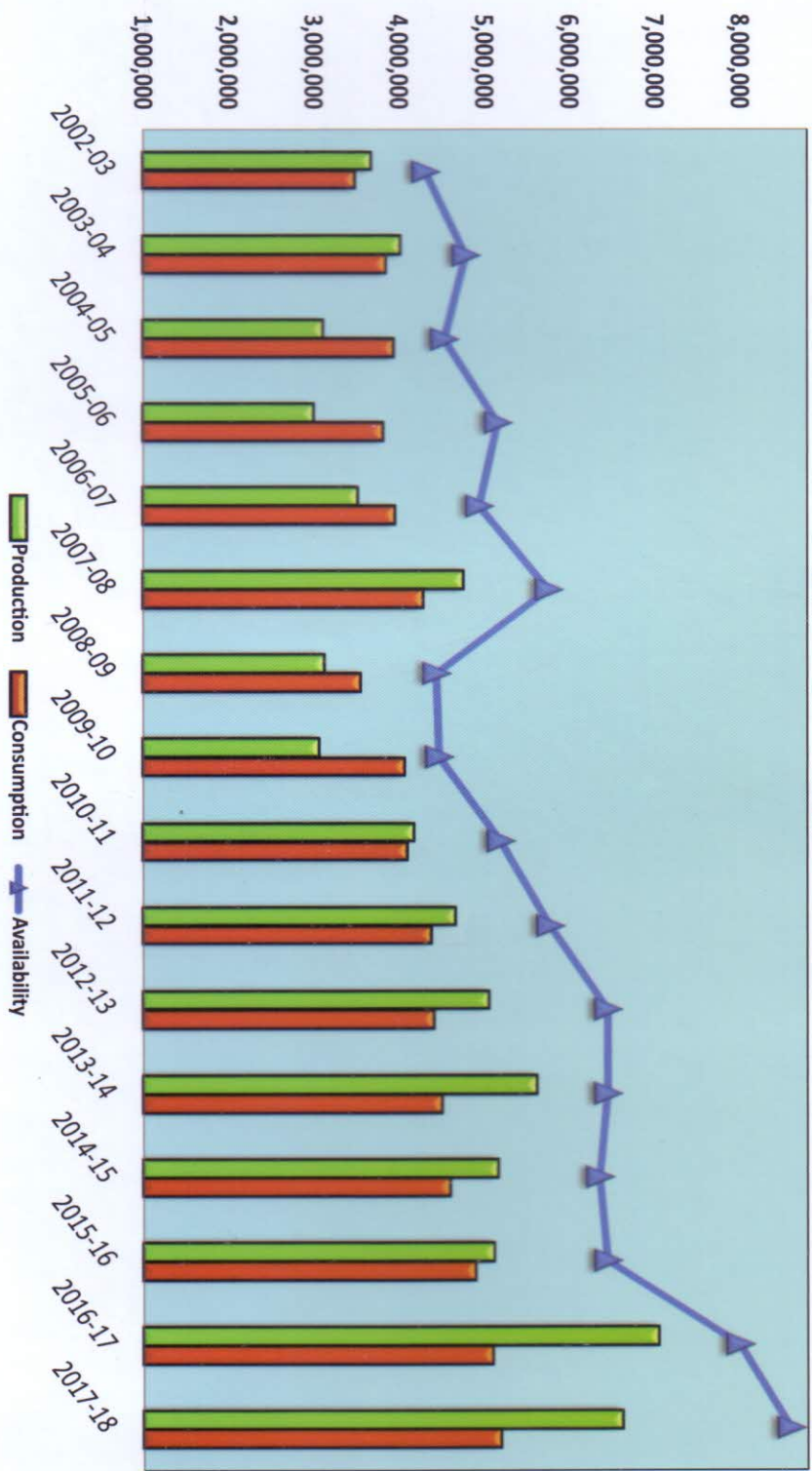
\* C: Cane, B: Beet, R: Raw

\*\* TCP stock as on 31-08-2015(Ignored)

Sources: FBS, ISO, Zonal Offices

# Agreed in SAB meeting

**Pakistan Sugar Mills Association  
Domestic Production, Availability & Consumption  
Sugar Year Oct. to Sept. 2002-2018**



## Sugarcane Production at Glance

